

YOUR DREAM HOME AWAITS

Tampa's friendliest 55+ lifestyle neighborhood

David Weekley Homeowners
Kevin Jordan & Lori Rust



TRADITION SERIES

Situated on 50-foot homesites, entertain with ease in our Tradition Series homes with inviting indoor and outdoor spaces.

Encore
by David Weekley Homes

Encore

by David Weekley Homes

THE HILSON

2,052 – 2,053 sq. ft., 1 Story
2 Bedrooms, 2 Full Baths, 1 Half Bath, 2-car Garage



A Elevation



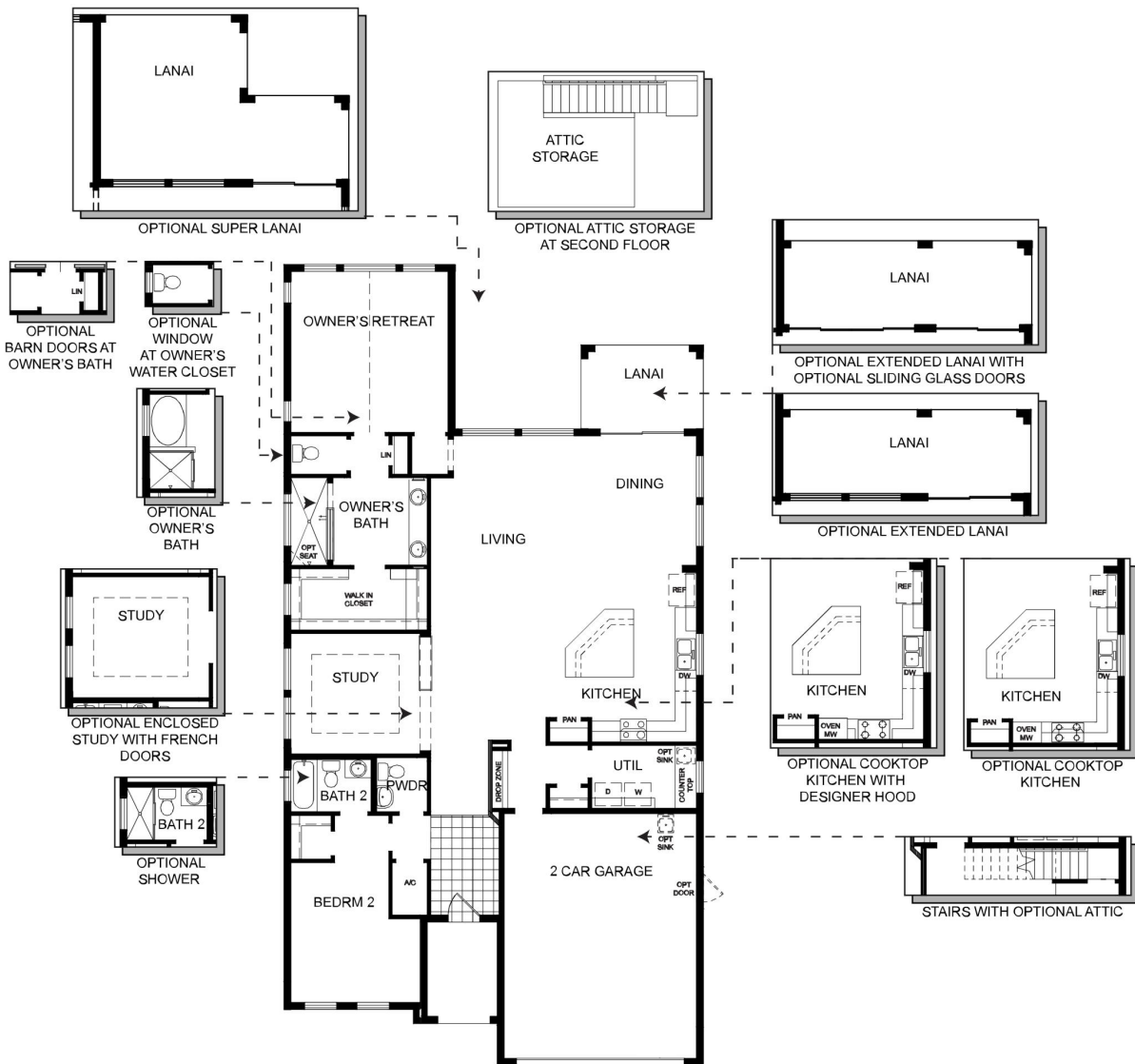
B Elevation

Encore

by David Weekley Homes

THE HILSON

2,052 – 2,053 sq. ft., 1 Story
2 Bedrooms, 2 Full Baths, 1 Half Bath, 2-car Garage



Encore

by David Weekley Homes

THE THERON

2,032 – 2,052 sq. ft., 1 Story
2 Bedrooms, 2 Full Baths, 1 Half Bath, 2-car Garage

TRADITION SERIES | ENCORE AT FISHHAWK RANCH



A Elevation



C Elevation



B Elevation



D Elevation

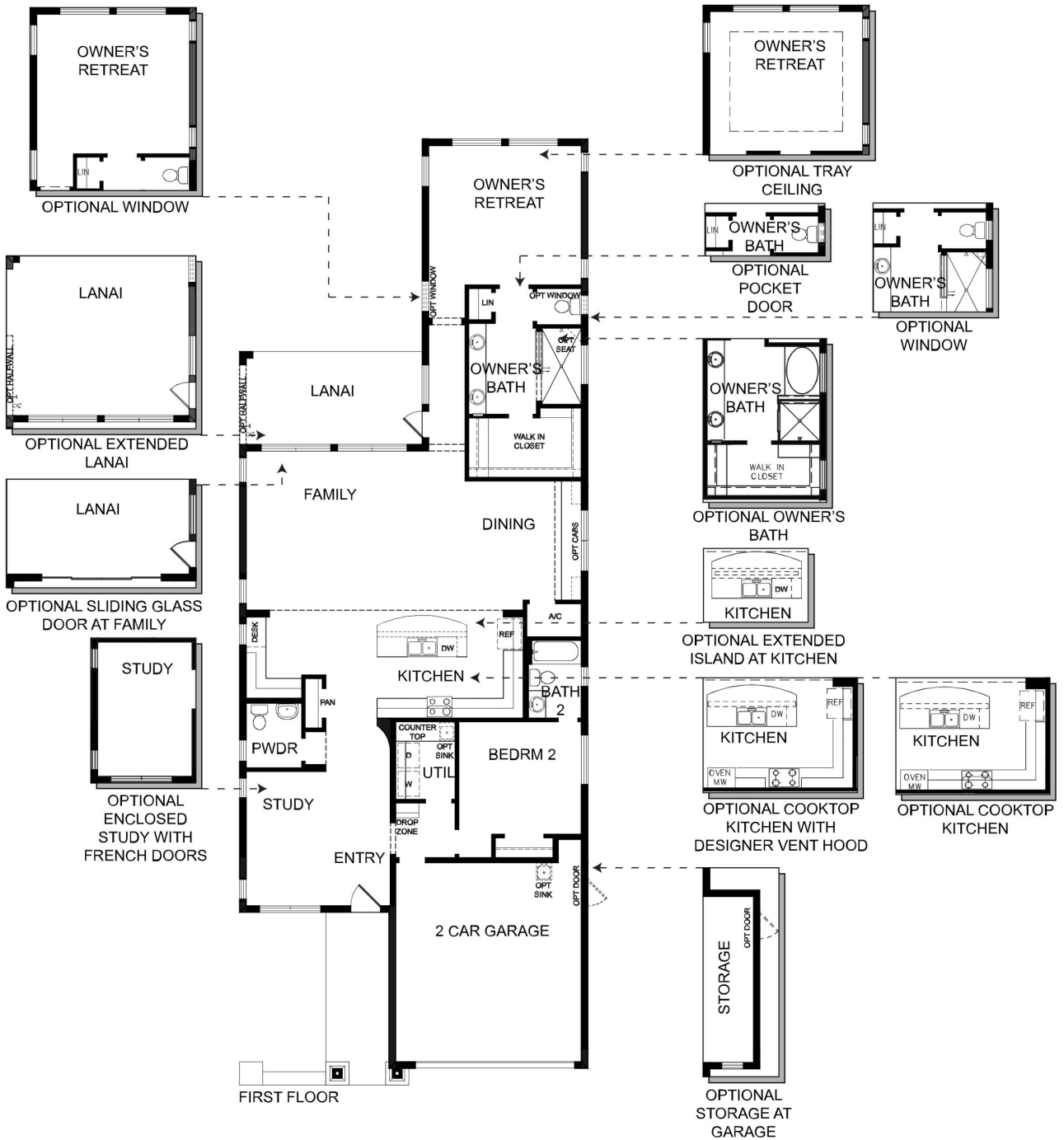
Encore

by David Weekley Homes

THE THERON

2,032 – 2,052 sq. ft., 1 Story
 2 Bedrooms, 2 Full Baths, 1 Half Bath, 2-car Garage

TRADITION SERIES | ENCORE AT FISHHAWK RANCH



Encore

by David Weekley Homes

THE FRASIER

2,221 – 2,222 sq. ft., 1 Story
2-3 Bedrooms, 2 Full Baths, 1 Half Bath, 2-car Garage



A Elevation



B Elevation



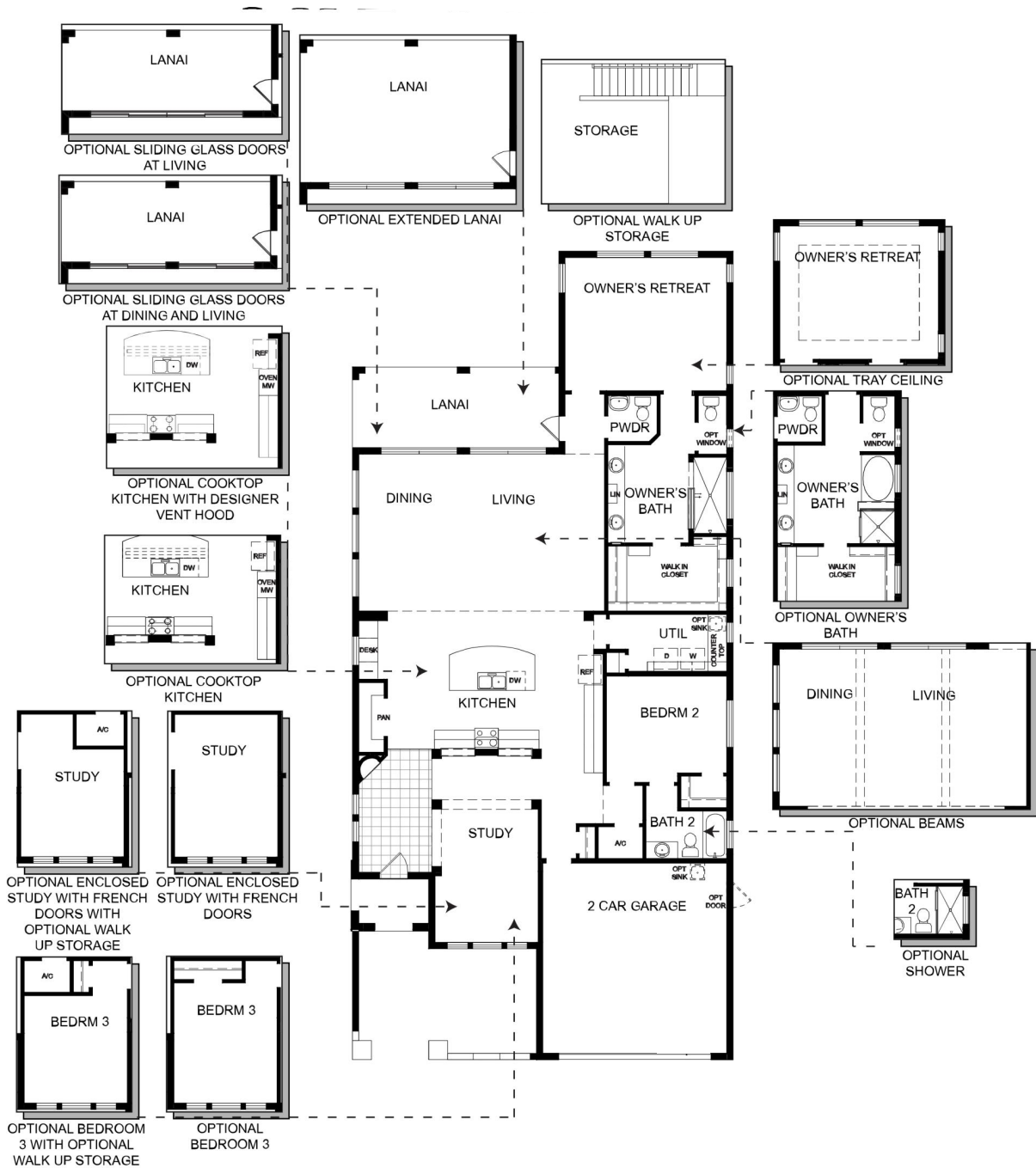
C Elevation

Encore

by David Weekley Homes

THE FRASIER

2,221 – 2,222 sq. ft., 1 Story
 3 Bedrooms, 2 Full Baths, 1 Half Bath, 2-car Garage



Encore

by David Weekley Homes

THE LEGEND

2,310 sq. ft., 1 Story
3 Bedrooms, 3 Full Baths, 2-3-car Garage



A Elevation



B Elevation

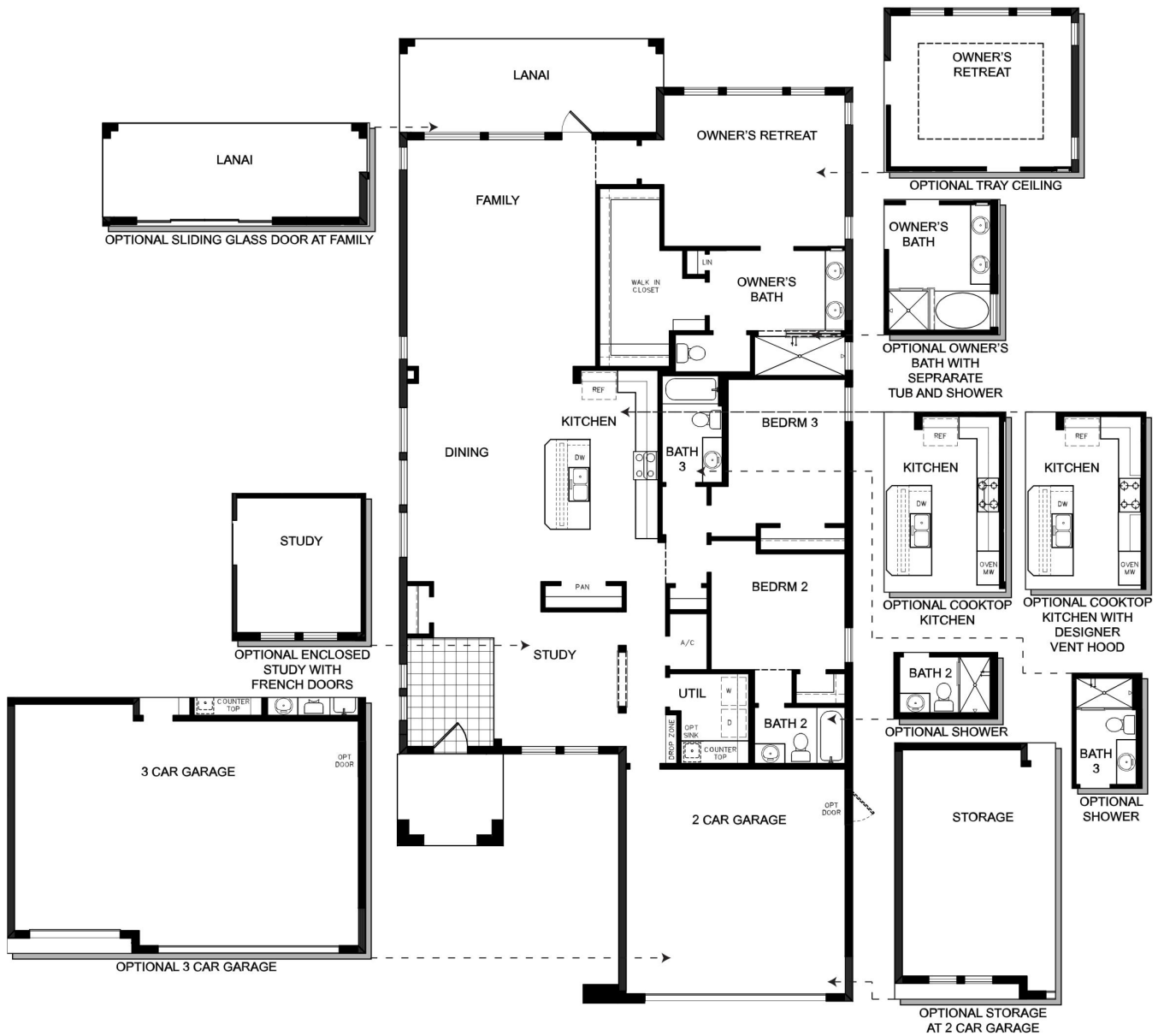
Encore

by David Weekley Homes

THE LEGEND

2,310 sq. ft., 1 Story
 3 Bedrooms, 3 Full Baths, 2-3-car Garage

TRADITION SERIES | ENCORE AT FISHHAWK RANCH



Encore

by David Weekley Homes

THE LORENZO

2,432 sq. ft., 1 Story
2-4 Bedrooms, 2-3 Full Baths, 1 Half Bath, 2-3-car Garage



A Elevation



C Elevation



B Elevation



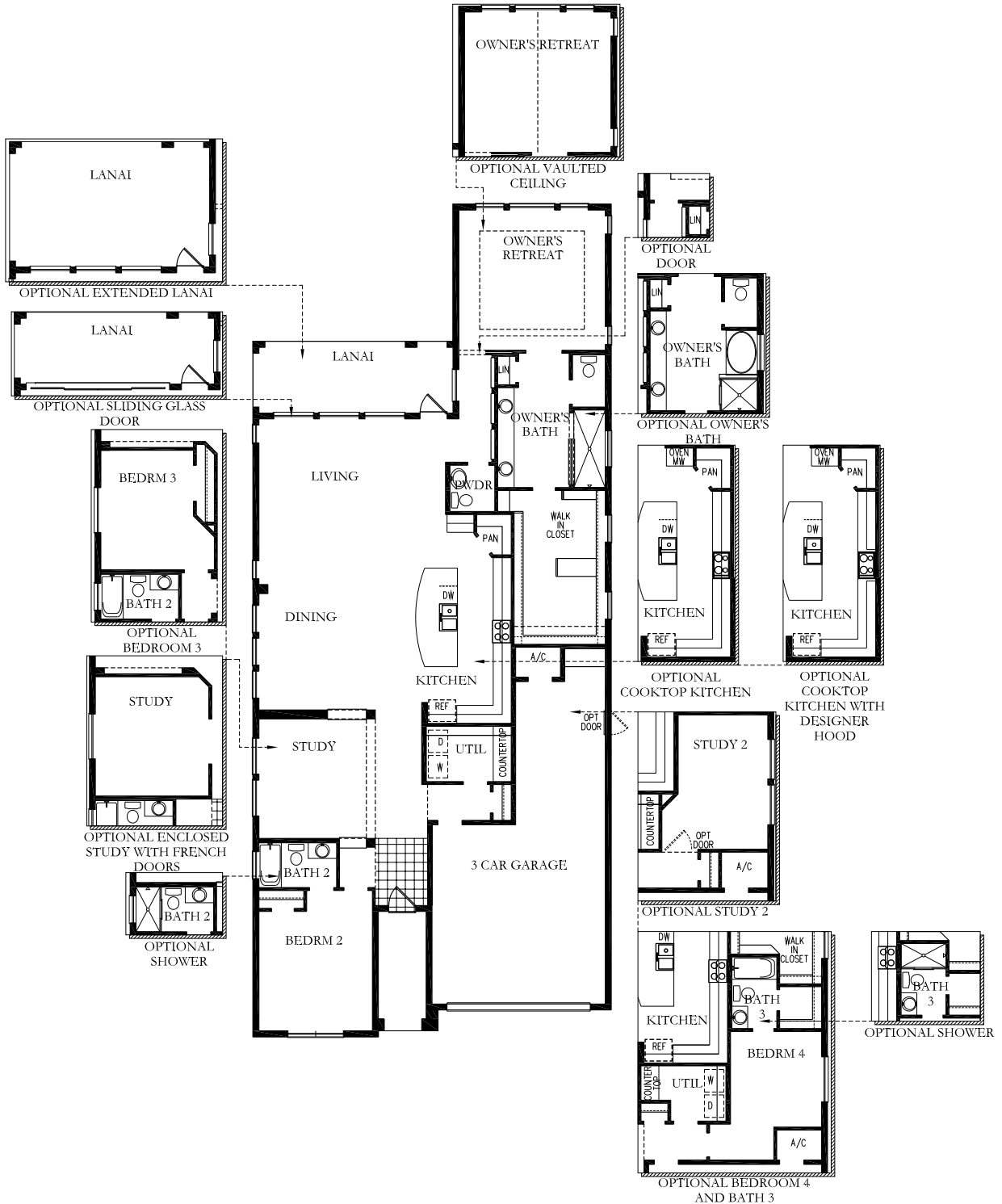
D Elevation

Encore

by David Weekley Homes

THE LORENZO

2,432 sq. ft., 1 Story
 2-4 Bedrooms, 2-3 Full Baths, 1 Half Bath, 2-3-car Garage



TRADITION SERIES | ENCORE AT FISHHAWK RANCH



Life in Encore at FishHawk Ranch

Getting Here

From I-75, exit 250 (Gibson-ton-Riverview) and travel east approximately six miles on Gibson-ton Drive/ Boyette Road and turn right onto Circa Fishhawk Boulevard. Turn right onto Village Center Drive and turn right onto Watercolor Drive. The entrance to Encore at FishHawk Ranch is on the left.

Master HOA \$375 per year

Encore HOA \$229 per month (includes lawn maintenance: mowing, fertilizing, water monitoring, irrigation control maintenance, mulching, insect and disease control, pruning of all lawns, and landscaping as installed with initial construction or replaced by maintenance company)

Encore Villa HOA \$82 per month (additional)

CDD Fees

Classic Series \$1,796.94 per year

Tradition Series \$1,894.90 per year

Signature Series \$1,894.90 per year

Villa Homes \$1,698.98 per year

For more information, contact 813-422-6175

Encore at FishHawk Ranch

6004 Thrushwood Road
Lithia, FL 33547

Encore
by David Weekley Homes

DavidWeekleyHomes.com



Atlanta • Austin • Charleston • Charlotte • Colorado Springs • Dallas/Ft. Worth
Denver • Houston • Indianapolis • Jacksonville • Minneapolis/St. Paul • Nashville • Orlando
Phoenix • Portland • Raleigh • Salt Lake City • San Antonio • Sarasota • Tampa



Encore at FishHawk Ranch is an age-restricted community. See a David Weekley Homes Sales Consultant for a copy of the restrictions and other details. Prices, plans, dimensions, features, specifications, materials, and availability of homes or communities are subject to change without notice or obligation. Illustrations are artist's depictions only and may differ from completed improvements. Copyright © 2019 David Weekley Homes - All Rights Reserved. CBC1257289 Weekley Homes, LLC. Tampa, FL (TAMO105514)

