

# THE VICTORY



Exterior A

2,691 sq. ft.

4 - 5 Bedrooms

2 - 4 Full Baths

1 Half Bath

2 Car Garage



Exterior B

**Sandra A.**



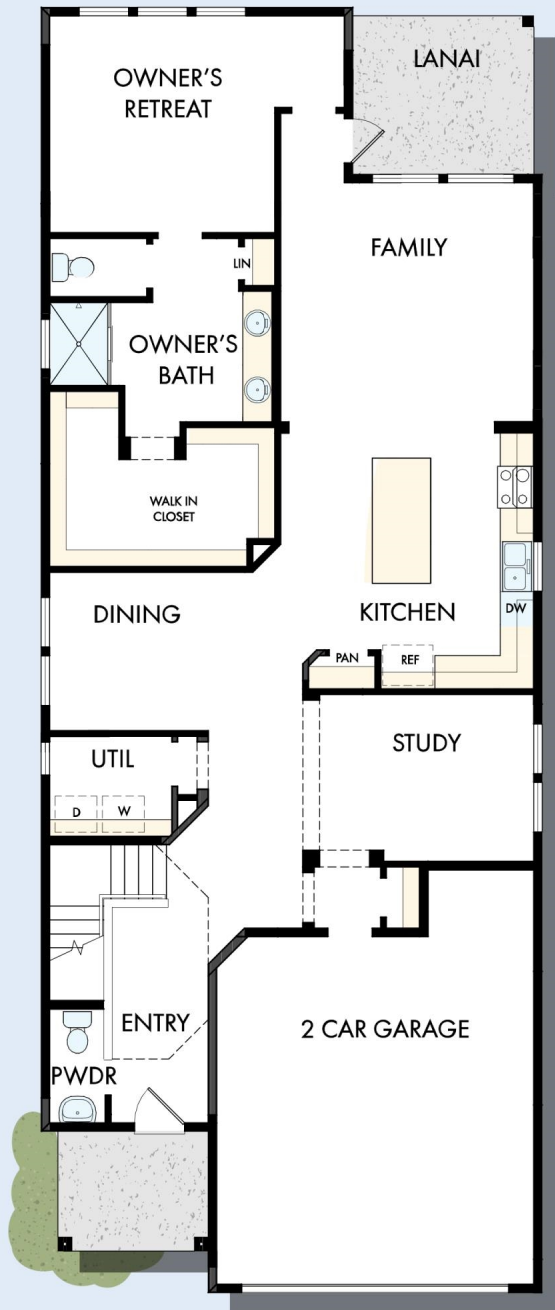
## **Best Builder Around**

We have loved DW homes ever since our mother bought one. The quality of their work, attention to detail and willingness to respond to questions is top notch. The biggest thing we love about DW is their focus on customer service. They are not your typical builder who meets with you to get a check and forgets about you till walk thru. They are your partner through the entire process. Each step of the way they know they are building your dream house and really treat you like family. I would recommend them hands down. My husband sells real estate and has dealt with numerous builders around town. He always directs his clients to DW and signs their praises.

**David Weekley  
Homes**

# THE VICTORY

2,691 sq. ft. • 4 - 5 Bedrooms • 2 - 4 Full Baths • 1 Half Bath • 2 Car Garage



FIRST FLOOR



OPTIONAL BEDROOM 5  
WITH BATH 4 AT STUDY



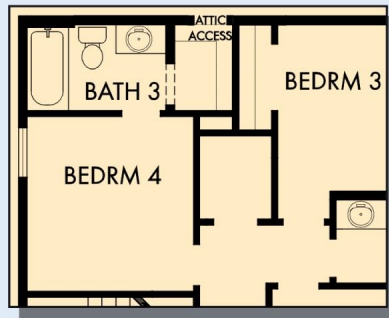
OPTIONAL SLIP-IN TUB WITH SEPARATE  
SHOWER AT OWNER'S BATH



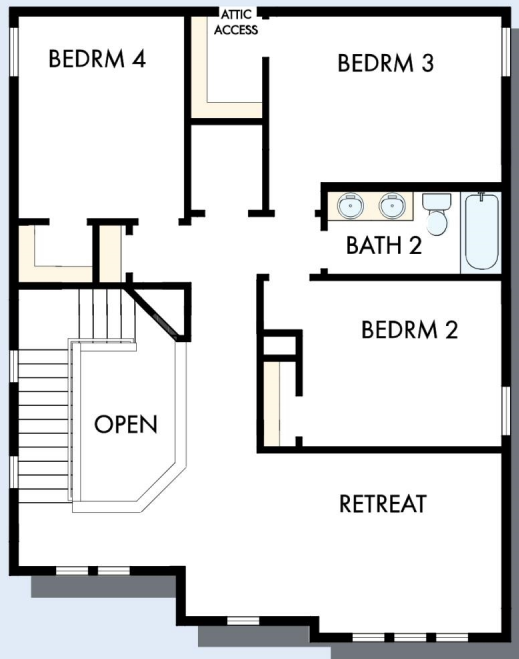
OPTIONAL SUPER SHOWER  
AT OWNER'S BATH



# THE VICTORY



OPTIONAL BATH 3 AT  
BEDROOM 4



SECOND FLOOR

For additional options, please visit [DavidWeekleyHomes.com](http://DavidWeekleyHomes.com)



See a David Weekley Homes Sales Consultant for details.  
Prices, plans, dimensions, features, specifications, materials,  
and availability of homes or communities are subject to  
change without notice or obligation. Illustrations are artist's  
depictions only and may differ from completed improvements.  
Copyright © 2025 David Weekley Homes - All Rights Reserved.  
Jacksonville, FL

## DavidWeekleyHomes.com