

# THE NASSAU



Exterior A

2,315 - 2,333 sq. ft.

4 - 5 Bedrooms

2 - 3 Full Baths

1 Half Bath

2 Car Garage



Exterior B

**Shane**



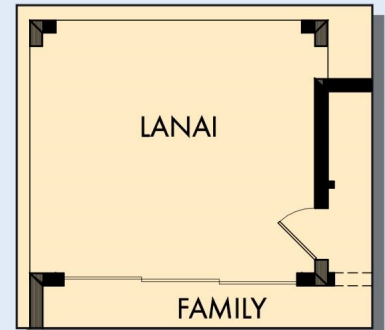
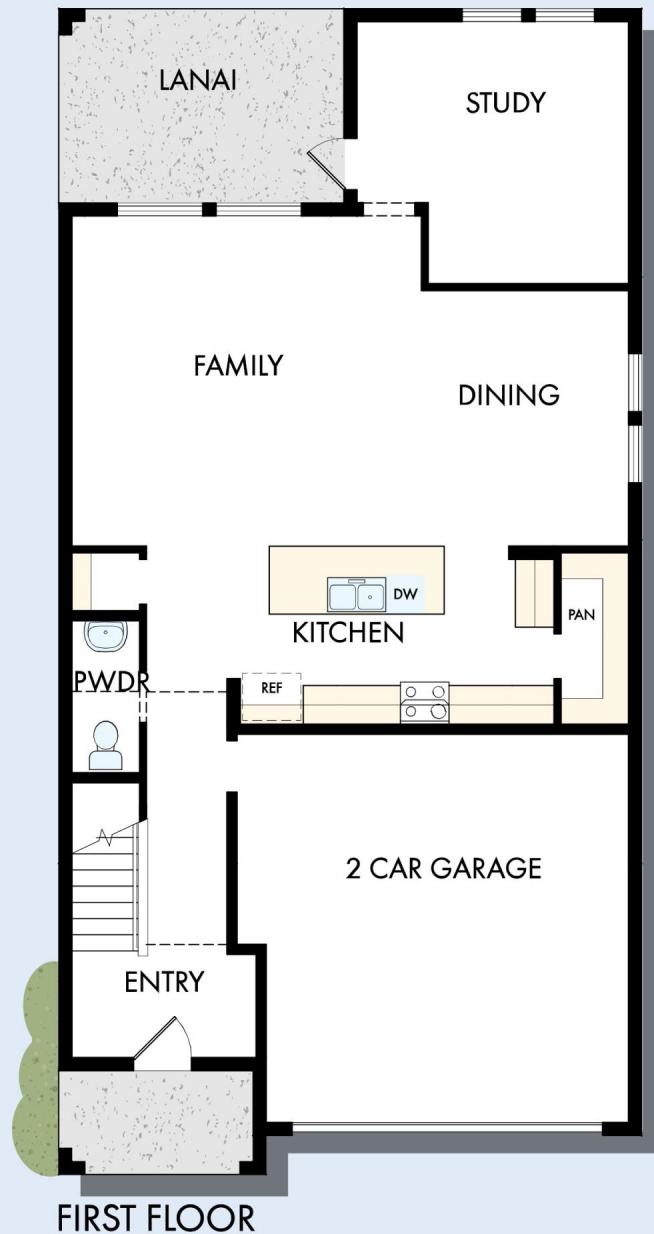
## **We're living our fairytale thanks to David Weekley**

We can't say enough about the level of quality and care we received while building our home. Our builder was with us every step of the way to make sure our every need and desire was being met! The team truly went above and beyond at every turn to give us the home of our dreams! We will definitely recommend David Weekley to anyone looking to build a new home!

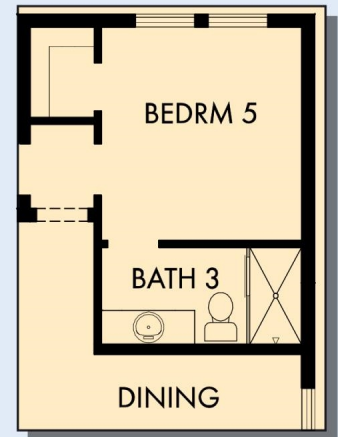
**David Weekley  
Homes**

# THE NASSAU

2,315 - 2,333 sq. ft. • 4 - 5 Bedrooms • 2 - 3 Full Baths • 1 Half Bath • 2 Car Garage



OPTIONAL EXTENDED LANAI  
WITH SLIDING GLASS DOOR



OPTIONAL BEDROOM 5  
WITH BATH 3 AT STUDY

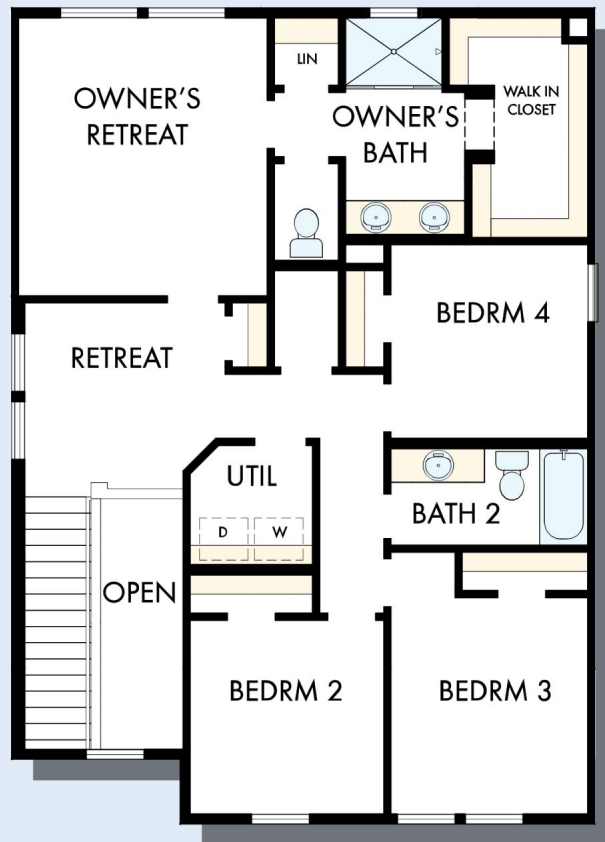
# THE NASSAU



OPTIONAL SLIDE-IN TUB WITH  
SEPARATE SHOWER AT  
OWNER'S BATH



OPTIONAL SUPER SHOWER AT  
OWNER'S BATH



SECOND FLOOR

For additional options, please visit [DavidWeekleyHomes.com](http://DavidWeekleyHomes.com)



See a David Weekley Homes Sales Consultant for details.  
Prices, plans, dimensions, features, specifications, materials,  
and availability of homes or communities are subject to  
change without notice or obligation. Illustrations are artist's  
depictions only and may differ from completed improvements.  
Copyright © 2025 David Weekley Homes - All Rights Reserved.  
Tampa, FL

## DavidWeekleyHomes.com