

# THE HEELER



Exterior A



Exterior B

1,684 - 1,722 sq. ft.

3 - 4 Bedrooms

2 - 3 Full Baths

1 - 2 Half Baths

2 Car Garage

## Gigi and Papa



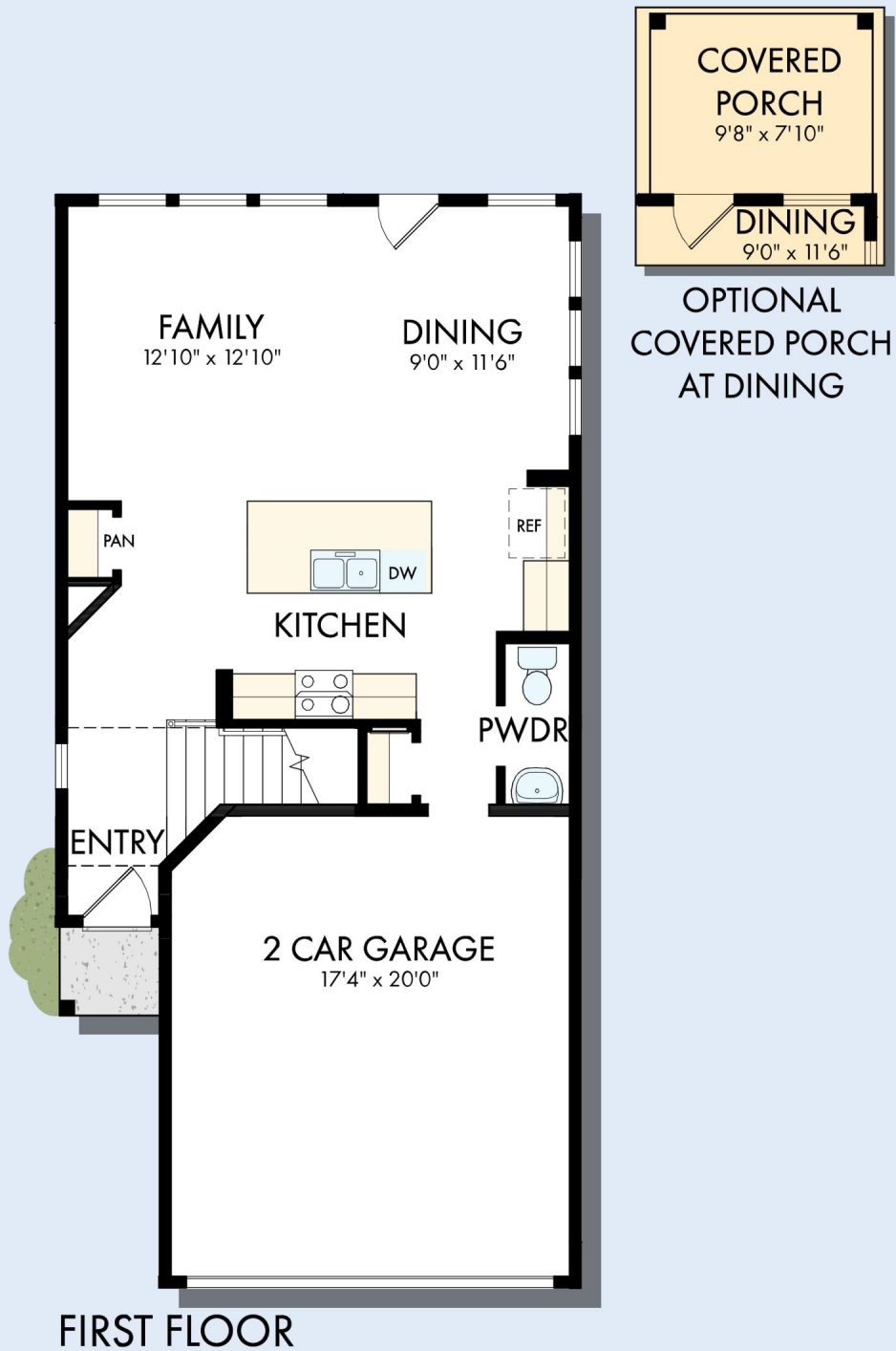
### **THE BESTest - Better than all the rest!**

What an awesome and personal family-oriented company! From touring model homes to selecting "THE ONE" just for us, the experience was delightful and amazing! The entire David Weekley team has been exceptionally wonderful and always available to address any issues we encountered. We have been amazed and impressed by the "Service after the Sale" approach by the David Weekley staff. We would recommend David Weekley homes to anyone. We feel like we are an important member of the Weekley family!

**David Weekley  
Homes**

# THE HEELER

1,684 - 1,722 sq. ft. • 3 - 4 Bedrooms • 2 - 3 Full Baths • 1 - 2 Half Baths • 2 Car Garage



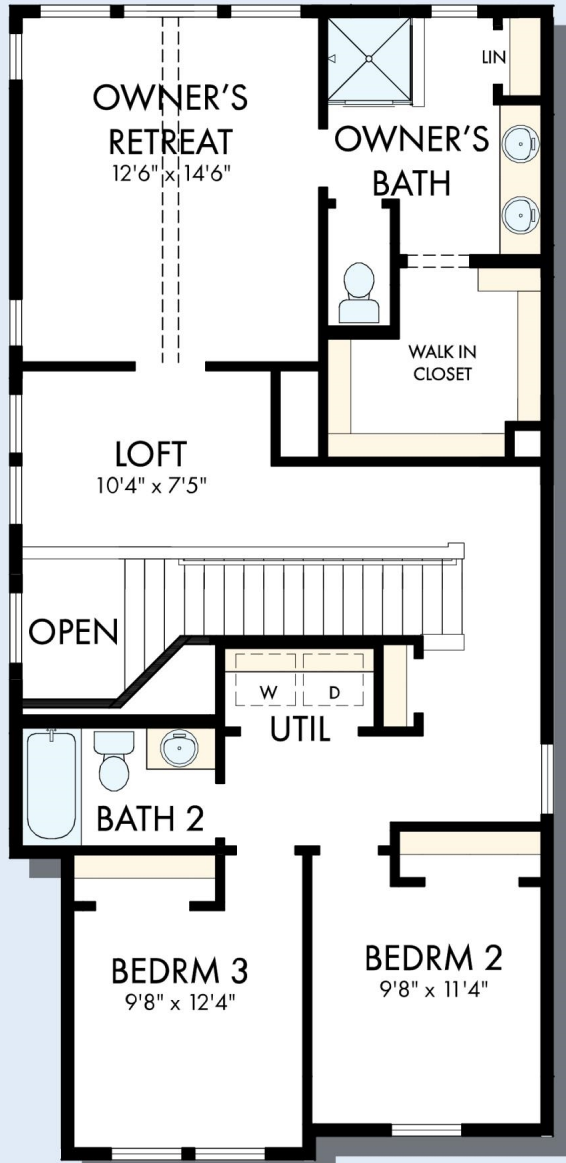
B672 in 2221 AUS

For additional options, please visit [DavidWeekleyHomes.com](http://DavidWeekleyHomes.com)

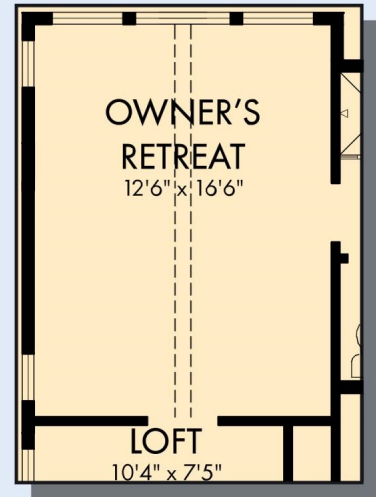
4/15/2026

**DavidWeekleyHomes.com**

# THE HEELER



SECOND FLOOR



OPTIONAL EXTENDED OWNER'S RETREAT



OPTIONAL DROP-IN TUB WITH SEPARATE SHOWER AT OWNER'S BATH



OPTIONAL SUPER SHOWER AT OWNER'S BATH

For additional options, please visit [DavidWeekleyHomes.com](http://DavidWeekleyHomes.com)

See a David Weekley Homes Sales Consultant for details. Prices, plans, dimensions, features, specifications, materials, and availability of homes or communities are subject to change without notice or obligation. Illustrations are artist's depictions only and may differ from completed improvements. Copyright © 2026 David Weekley Homes - All Rights Reserved. Austin, TX

**DavidWeekleyHomes.com**

