

# THE PUTMAN



Exterior A



Exterior B

3,096 - 4,556 sq. ft.

4 - 6 Bedrooms

2 - 4 Full Baths

1 Half Bath

3 - 4 Car Garage

**Meg S.**



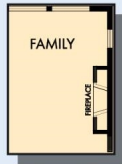
### **Truly treated us like family!!!**

We enjoyed every part of the home building process. It was amazing! Our builder was always keeping us informed and really went above and beyond to ensure that we love our home. Our warranty rep is outstanding and continues to take care of our every need. I couldn't have asked for a better experience. Our builder and warranty rep continue to be there for us as a family. While our interactions with the DW Family have been highly professional, we are also lucky enough to be able to call them some of our greatest friends! Wouldn't change a thing!

**David Weekley  
Homes**

# THE PUTMAN

3,096 - 4,556 sq. ft. • 4 - 6 Bedrooms • 2 - 4 Full Baths • 1 Half Bath • 3 - 4 Car Garage



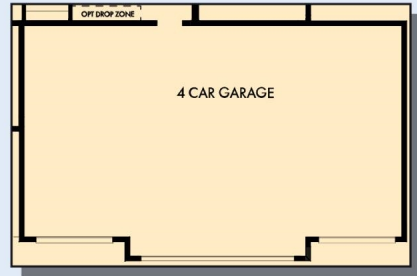
OPTIONAL WALL FIREPLACE AT FAMILY



OPTIONAL BEDROOM 5 WITH BATH3 AT STUDY 2



FIRST FLOOR WITH OPTIONAL ATHLETIC COURT



OPTIONAL 4 CAR GARAGE



FIRST FLOOR

# THE PUTMAN



OPTIONAL FREE STANDING TUB WITH SEPARATE SHOWER AT OWNER'S BATH



OPTIONAL SUPER SHOWER AT OWNER'S BATH



OPTIONAL BEDROOM 4 AT RETREAT

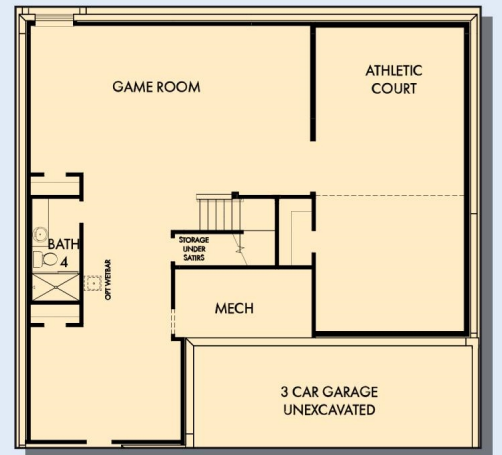
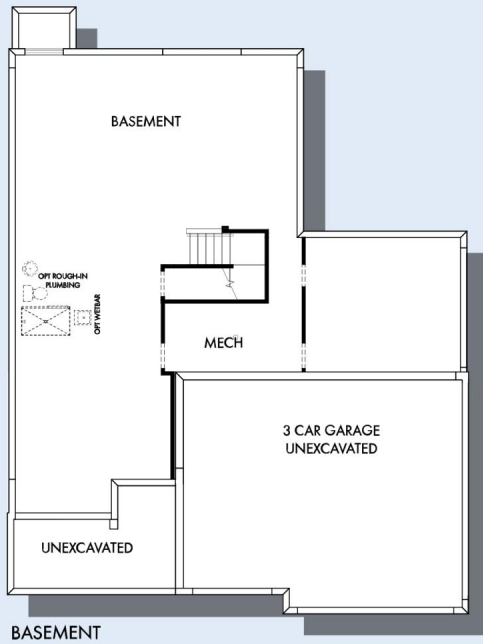


SECOND FLOOR

For additional options, please visit [DavidWeekleyHomes.com](http://DavidWeekleyHomes.com)

**DavidWeekleyHomes.com**

# THE PUTMAN



For additional options, please visit [DavidWeekleyHomes.com](http://DavidWeekleyHomes.com)

See a David Weekley Homes Sales Consultant for details. Prices, plans, dimensions, features, specifications, materials, and availability of homes or communities are subject to change without notice or obligation. Illustrations are artist's depictions only and may differ from completed improvements. Copyright © 2026 David Weekley Homes - All Rights Reserved. Minneapolis/St. Paul, MN

**DavidWeekleyHomes.com**

