

THE TULIP



Exterior F

1,989 - 2,000 sq. ft.

3 Bedrooms

2 Full Baths

2 Car Garage



Exterior H

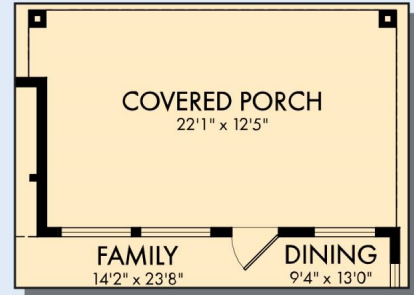
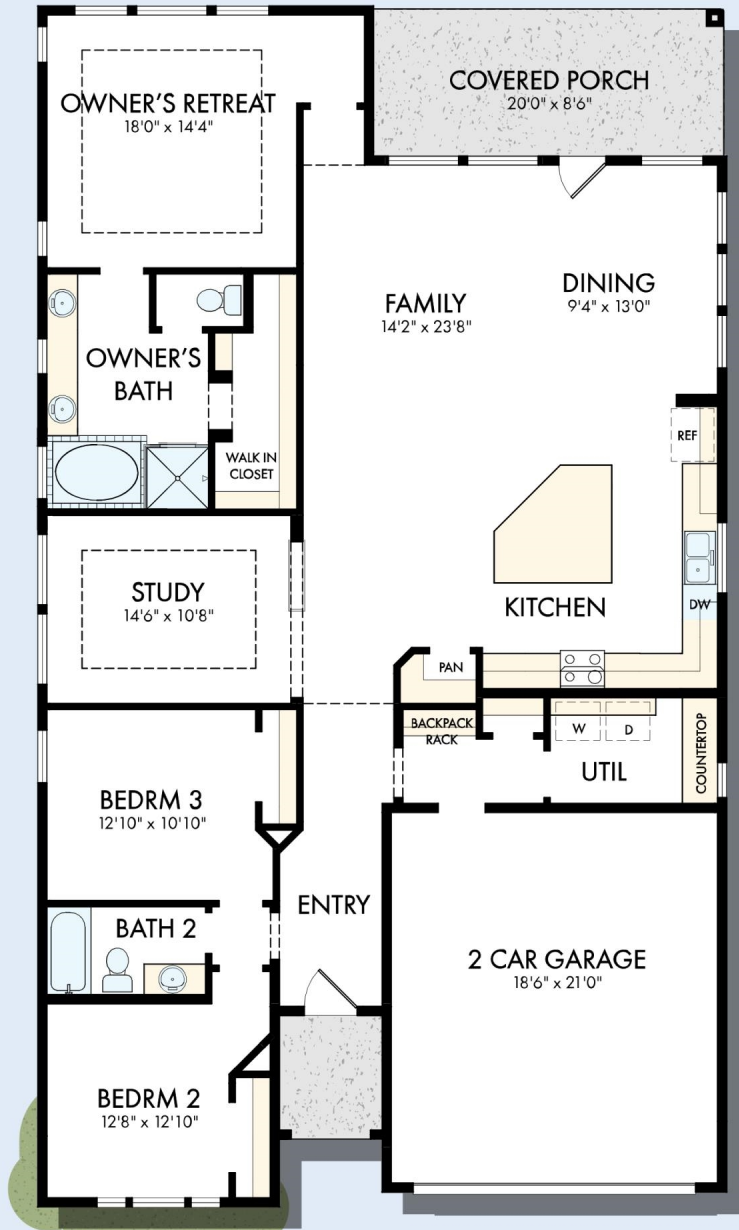


Exterior I

David Weekley
Homes

THE TULIP

1,989 - 2,000 sq. ft. • 3 Bedrooms • 2 Full Baths • 2 Car Garage



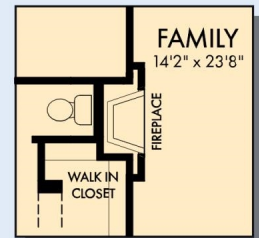
OPTIONAL EXTENDED COVERED PORCH



OPTIONAL SUPER SHOWER AT OWNER'S BATH



OPTIONAL FREE STANDING TUB WITH SEPARATE SHOWER AT OWENR'S BATH



OPTIONAL WALL FIREPLACE AT FAMILY

T002 in 1451 HOU

For additional options, please visit DavidWeekleyHomes.com

7/8/2026

See a David Weekley Homes Sales Consultant for details. Prices, plans, dimensions, features, specifications, materials, and availability of homes or communities are subject to change without notice or obligation. Illustrations are artist's depictions only and may differ from completed improvements. Copyright © 2026 David Weekley Homes - All Rights Reserved. Houston, TX

DavidWeekleyHomes.com

