

# THE PORTSMOUTH



Exterior A

2,530 - 2,532 sq. ft.

---

3 Bedrooms

---

2 Full Baths

---

1 Half Bath

---

2 Car Garage



Exterior B

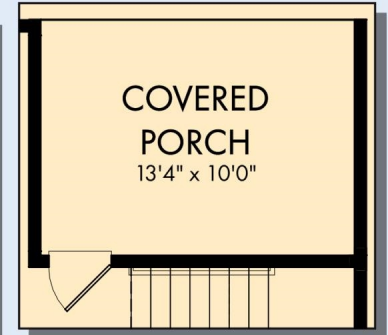
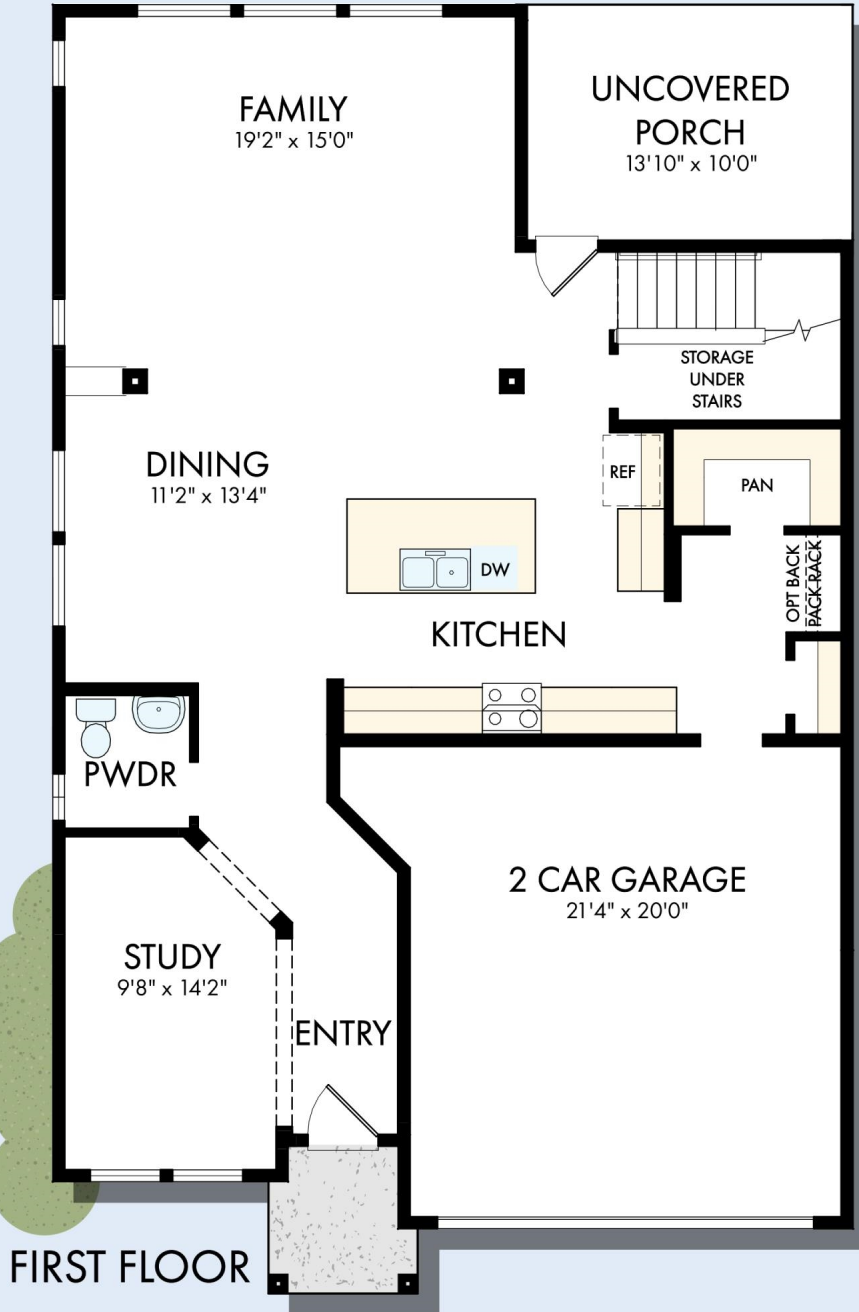


Exterior C

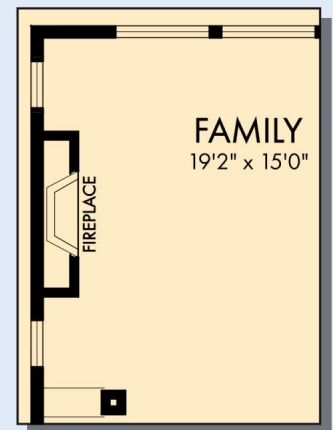
David Weekley  
Homes

# THE PORTSMOUTH

2,530 - 2,532 sq. ft. • 3 Bedrooms • 2 Full Baths • 1 Half Bath • 2 Car Garage



OPTIONAL COVERED PORCH AT FAMILY



OPTIONAL WALL FIREPLACE AT FAMILY

# THE PORTSMOUTH



OPTIONAL FREE  
STANDING TUB WITH  
SEPARATE SHOWER  
AT OWNER'S BATH



OPTIONAL SUPER  
SHOWER AT  
OWNER'S BATH

For additional options, please visit [DavidWeekleyHomes.com](http://DavidWeekleyHomes.com)

See a David Weekley Homes Sales Consultant for details.  
Prices, plans, dimensions, features, specifications, materials,  
and availability of homes or communities are subject to  
change without notice or obligation. Illustrations are artist's  
depictions only and may differ from completed improvements.  
Copyright © 2026 David Weekley Homes - All Rights Reserved.  
POR, OR

**DavidWeekleyHomes.com**

