

# THE MCBEE



Exterior A

2,090 - 2,830 sq. ft.

4 - 5 Bedrooms

2 - 3 Full Baths

1 Half Bath

2 - 3 Car Garage



Exterior B

**Meg S.**



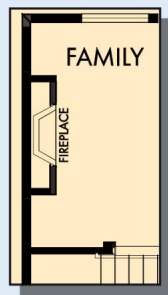
### **Truly treated us like family!!!**

We enjoyed every part of the home building process. It was amazing! Our builder was always keeping us informed and really went above and beyond to ensure that we love our home. Our warranty rep is outstanding and continues to take care of our every need. I couldn't have asked for a better experience. Our builder and warranty rep continue to be there for us as a family. While our interactions with the DW Family have been highly professional, we are also lucky enough to be able to call them some of our greatest friends! Wouldn't change a thing!

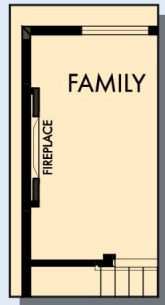
**David Weekley  
Homes**

# THE MCBEE

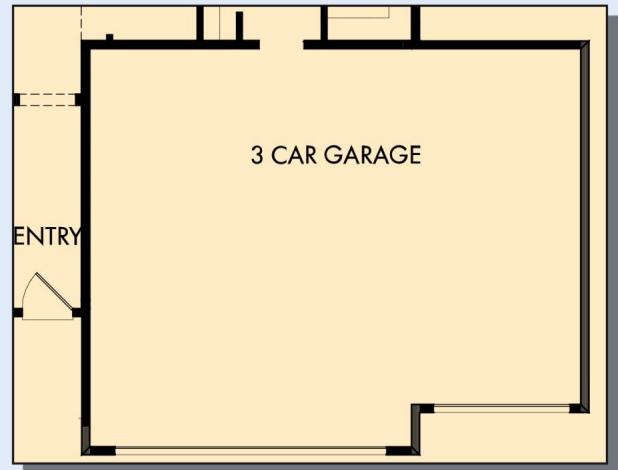
2,090 - 2,830 sq. ft. • 4 - 5 Bedrooms • 2 - 3 Full Baths • 1 Half Bath • 2 - 3 Car Garage



OPTIONAL  
WALL FIREPLACE  
AT FAMILY



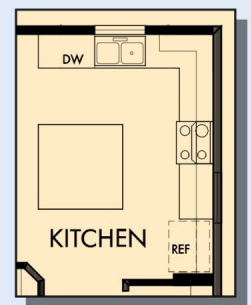
OPTIONAL  
ELECTRIC WALL  
FIREPLACE  
AT FAMILY



OPTIONAL 3 CAR GARAGE



FIRST FLOOR



OPTIONAL SUPER  
KITCHEN

# THE MCBEE



SECOND FLOOR

For additional options, please visit [DavidWeekleyHomes.com](http://DavidWeekleyHomes.com)

**DavidWeekleyHomes.com**



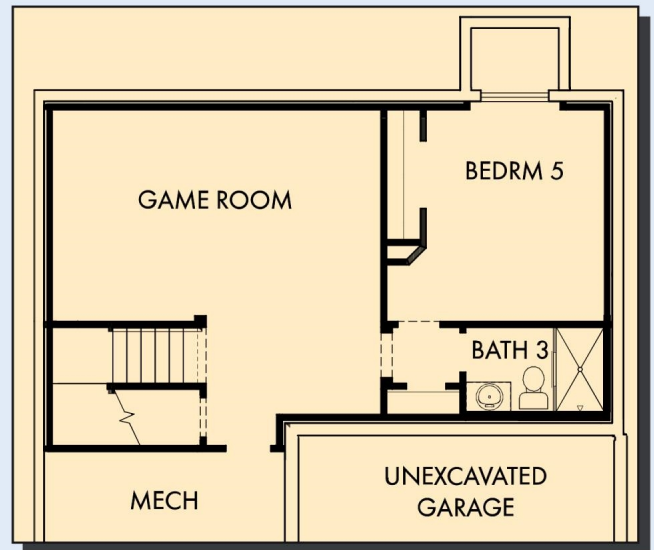
# THE MCBEE



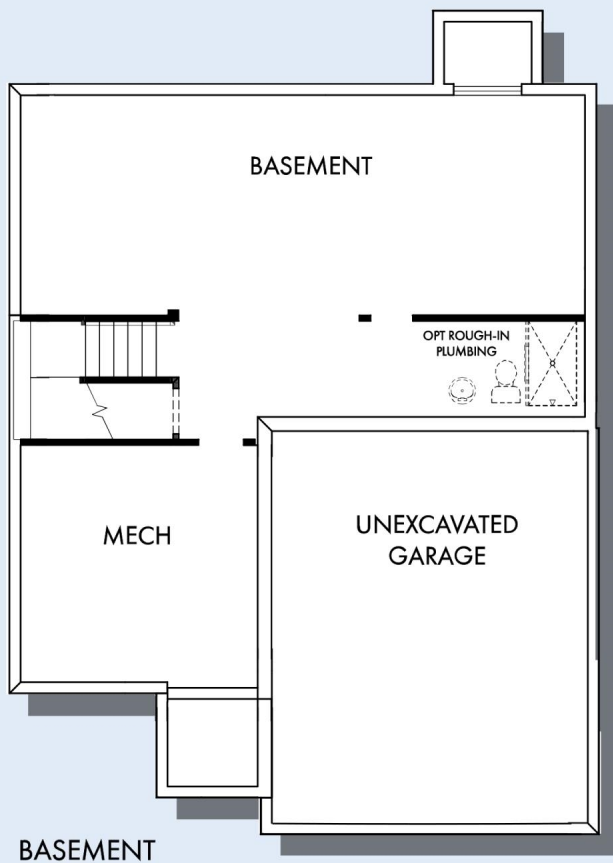
OPTIONAL DAYLIGHT AT BASEMENT



OPTIONAL WALKOUT AT BASEMENT



OPTIONAL FINISHED BASEMENT WITH  
GAME ROOM WITH BEDROOM 5 AND BATH 3



For additional options, please visit [DavidWeekleyHomes.com](http://DavidWeekleyHomes.com)

**DavidWeekleyHomes.com**

See a David Weekley Homes Sales Consultant for details.  
Prices, plans, dimensions, features, specifications, materials,  
and availability of homes or communities are subject to  
change without notice or obligation. Illustrations are artist's  
depictions only and may differ from completed improvements.  
Copyright © 2025 David Weekley Homes - All Rights Reserved.  
Minneapolis/St. Paul, MN

