

THE JULIEN



Exterior A



Exterior B

2,066 - 2,558 sq. ft.

3 Bedrooms

2 Full Baths

1 - 2 Half Baths

2 Car Garage

Meg S.



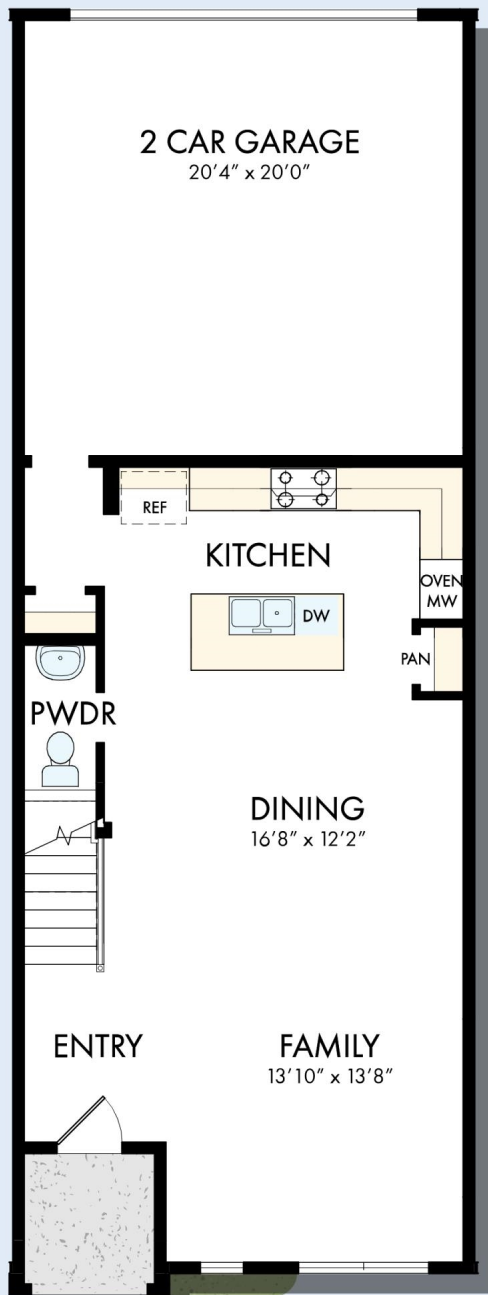
Truly treated us like family!!!

We enjoyed every part of the home building process. It was amazing! Our builder was always keeping us informed and really went above and beyond to ensure that we love our home. Our warranty rep is outstanding and continues to take care of our every need. I couldn't have asked for a better experience. Our builder and warranty rep continue to be there for us as a family. While our interactions with the DW Family have been highly professional, we are also lucky enough to be able to call them some of our greatest friends! Wouldn't change a thing!

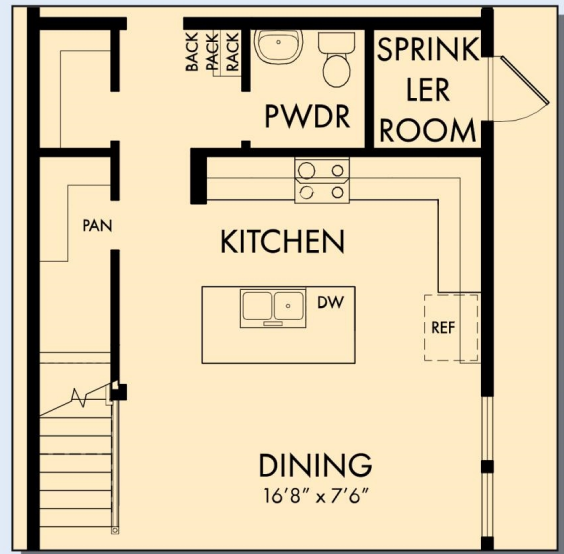
CENTRAL LIVING
by **David Weekley Homes**

THE JULIEN

2,066 - 2,558 sq. ft. • 3 Bedrooms • 2 Full Baths • 1 - 2 Half Baths • 2 Car Garage

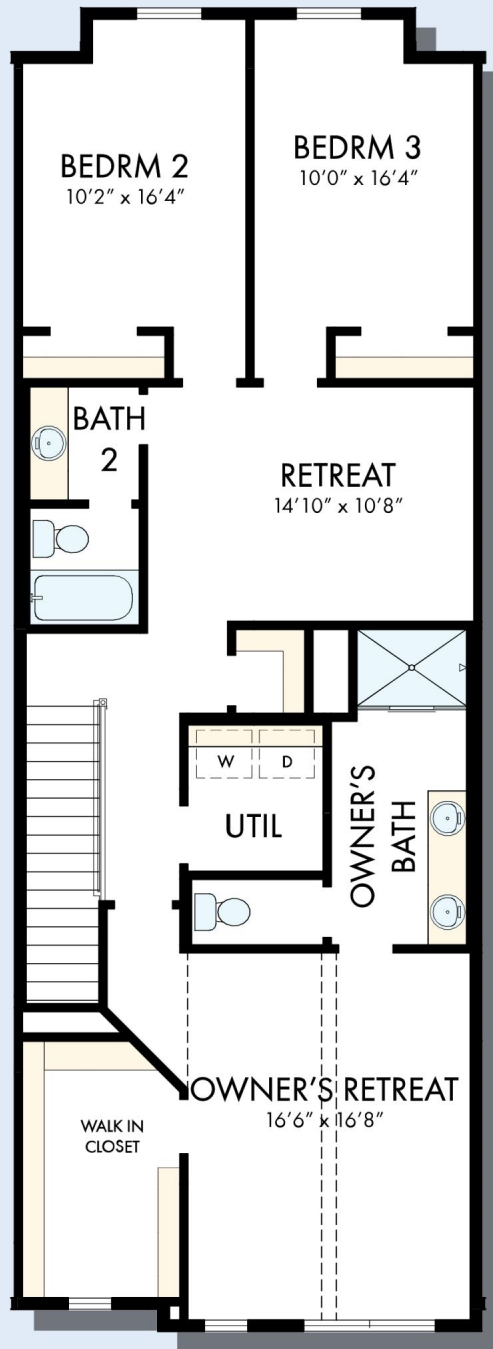


FIRST FLOOR

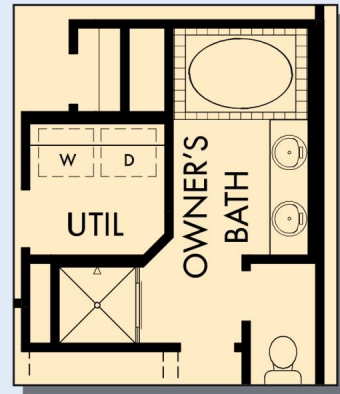


FIRST FLOOR WITH OPTIONAL SPRINKLER ROOM WITH END UNIT

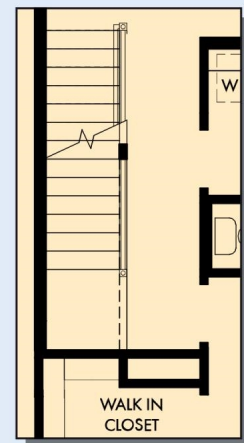
THE JULIEN



SECOND FLOOR



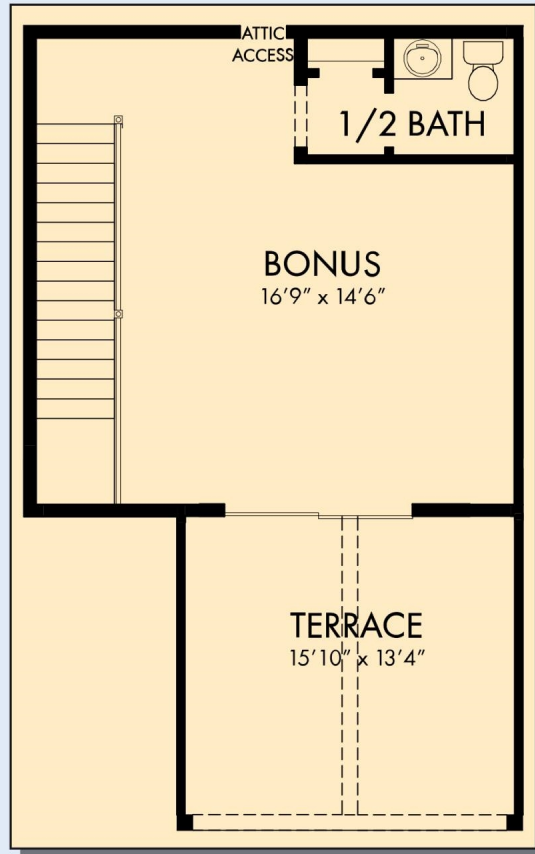
OPTIONAL DROP-IN TUB
WITH SEPARATE SHOWER
AT OWNER'S BATH



SECOND FLOOR
WITH OPTIONAL
THIRD FLOOR BONUS

For additional options, please visit DavidWeekleyHomes.com

THE JULIEN



OPTIONAL THIRD FLOOR BONUS
WITH HALF BATH

For additional options, please visit DavidWeekleyHomes.com

See a David Weekley Homes Sales Consultant for details. Prices, plans, dimensions, features, specifications, materials, and availability of homes or communities are subject to change without notice or obligation. Illustrations are artist's depictions only and may differ from completed improvements. Copyright © 2026 David Weekley Homes - All Rights Reserved. Dallas/Ft. Worth, TX



CENTRAL LIVING
by David Weekley Homes