

# THE HUXLEY



Exterior A



Exterior B

2,124 - 2,590 sq. ft.

3 - 4 Bedrooms

2 - 3 Full Baths

1 Half Bath

2 Car Garage

**Shane**



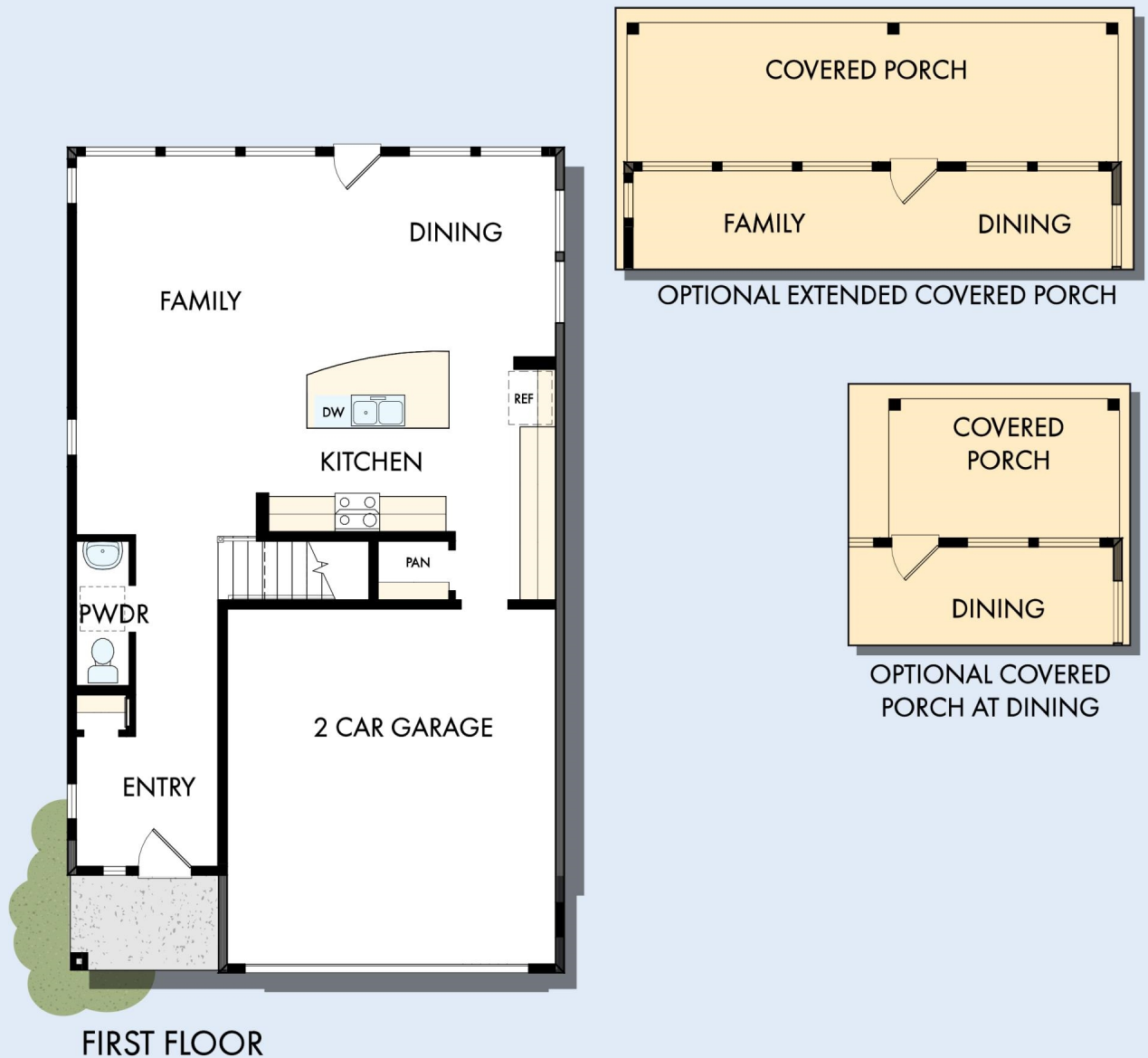
**We're living our fairytale thanks to David Weekley**

We can't say enough about the level of quality and care we received while building our home. Our builder was with us every step of the way to make sure our every need and desire was being met! The team truly went above and beyond at every turn to give us the home of our dreams! We will definitely recommend David Weekley to anyone looking to build a new home!

**David Weekley  
Homes**

# THE HUXLEY

2,124 - 2,590 sq. ft. • 3 - 4 Bedrooms • 2 - 3 Full Baths • 1 Half Bath • 2 Car Garage



B418 in 2223 AUS

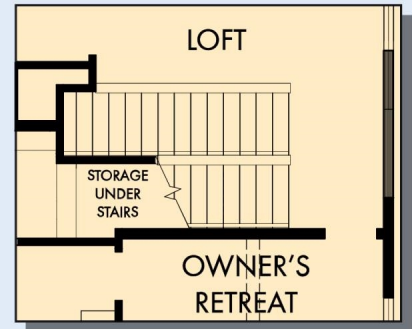
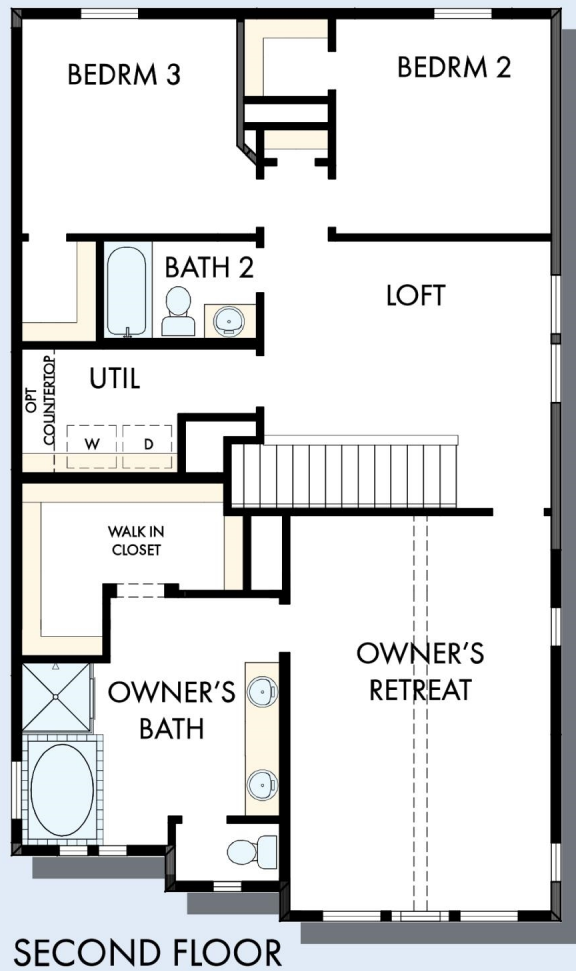
For additional options, please visit [DavidWeekleyHomes.com](http://DavidWeekleyHomes.com)

11/3/2025

**DavidWeekleyHomes.com**



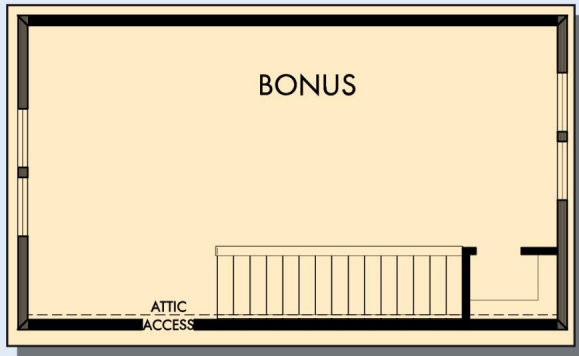
# THE HUXLEY



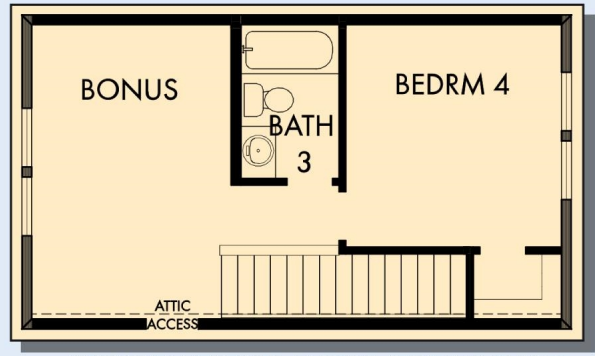
For additional options, please visit [DavidWeekleyHomes.com](http://DavidWeekleyHomes.com)

**DavidWeekleyHomes.com**

# THE HUXLEY



OPTIONAL THIRD FLOOR BONUS



OPTIONAL THIRD FLOOR BONUS WITH  
BEROOM 4 AND BATH 3

For additional options, please visit [DavidWeekleyHomes.com](http://DavidWeekleyHomes.com)



See a David Weekley Homes Sales Consultant for details.  
Prices, plans, dimensions, features, specifications, materials,  
and availability of homes or communities are subject to  
change without notice or obligation. Illustrations are artist's  
depictions only and may differ from completed improvements.  
Copyright © 2025 David Weekley Homes - All Rights Reserved.  
Austin, TX

## DavidWeekleyHomes.com