

THE HEBER



Exterior A

2,209 sq. ft.

3 - 4 Bedrooms

2 - 3 Full Baths

1 Half Bath

2 Car Garage



Exterior B

Chelsea



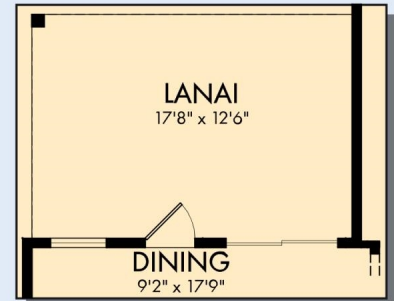
Incredible Experience, Incredible Home!

We trusted the team from Day 1 and couldn't have asked for a better experience. The attention to detail was fantastic, and we felt as if the DWH team had a personal interest in the success of our home. The process was well defined and every team member set very clear expectations. We love every inch of our home, and we'd definitely recommend DWH!

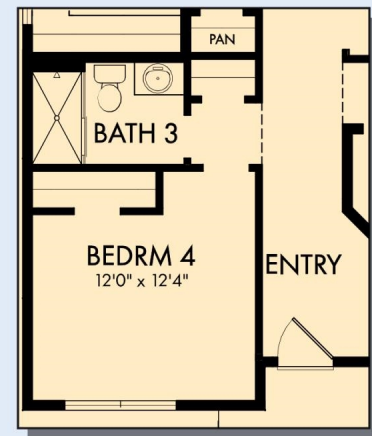
**David Weekley
Homes**

THE HEBER

2,209 sq. ft. • 3 - 4 Bedrooms • 2 - 3 Full Baths • 1 Half Bath • 2 Car Garage



OPTIONAL EXTENDED LANAI WITH SLIDING GLASS DOOR AT DINING



OPTIONAL BEDROOM 4 WITH BATH 3 AT STUDY



OPTIONAL FREE STANDING TUB WITH SEPARATE SHOWER AT OWNER'S BATH

F172 in 4938 JAC

For additional options, please visit DavidWeekleyHomes.com

6/8/2026

See a David Weekley Homes Sales Consultant for details. Prices, plans, dimensions, features, specifications, materials, and availability of homes or communities are subject to change without notice or obligation. Illustrations are artist's depictions only and may differ from completed improvements. Copyright © 2026 David Weekley Homes - All Rights Reserved. Jacksonville, FL

DavidWeekleyHomes.com

