

# THE JOSHUA



Exterior A



Exterior B

2,193 sq. ft.

3 - 4 Bedrooms

2 - 3 Full Baths

1 Half Bath

2 Car Garage

**Meg S.**



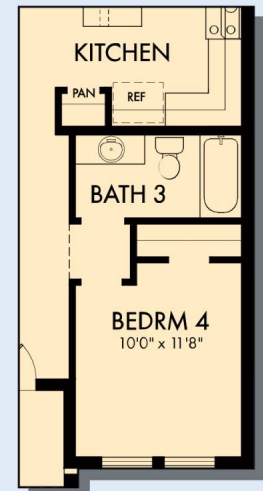
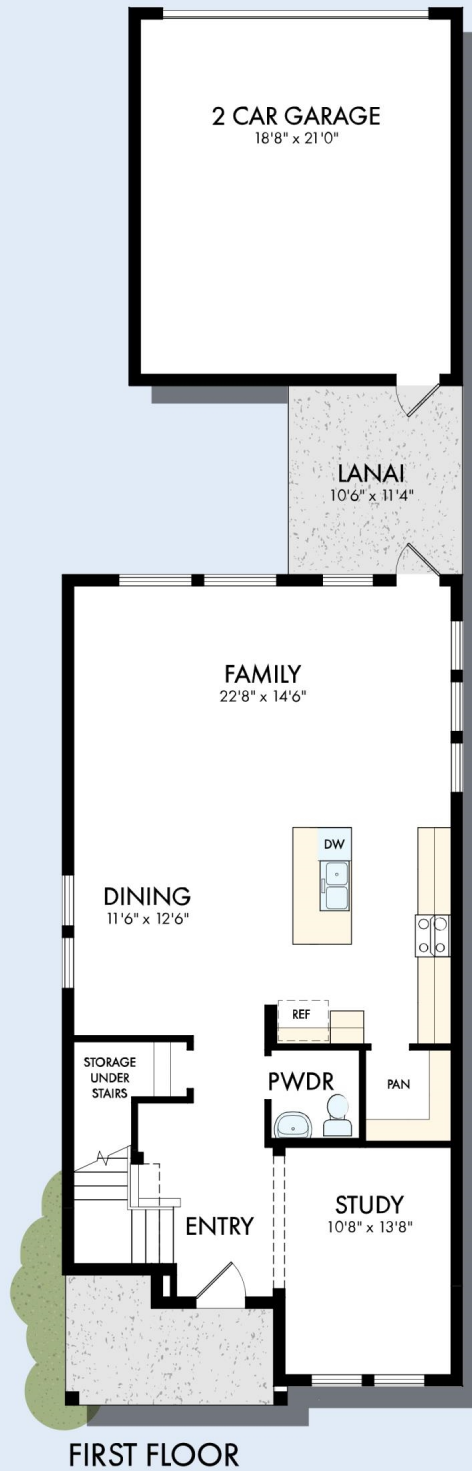
### **Truly treated us like family!!!**

We enjoyed every part of the home building process. It was amazing! Our builder was always keeping us informed and really went above and beyond to ensure that we love our home. Our warranty rep is outstanding and continues to take care of our every need. I couldn't have asked for a better experience. Our builder and warranty rep continue to be there for us as a family. While our interactions with the DW Family have been highly professional, we are also lucky enough to be able to call them some of our greatest friends! Wouldn't change a thing!

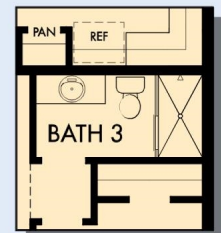
**David Weekley  
Homes**

# THE JOSHUA

2,193 sq. ft. • 3 - 4 Bedrooms • 2 - 3 Full Baths • 1 Half Bath • 2 Car Garage

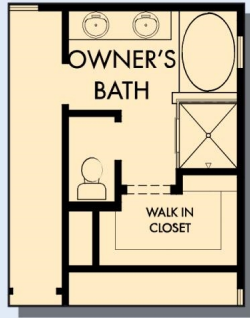


OPTIONAL BEDROOM 4 WITH BATH 3 AT STUDY



OPTIONAL SHOWER AT BATH 3

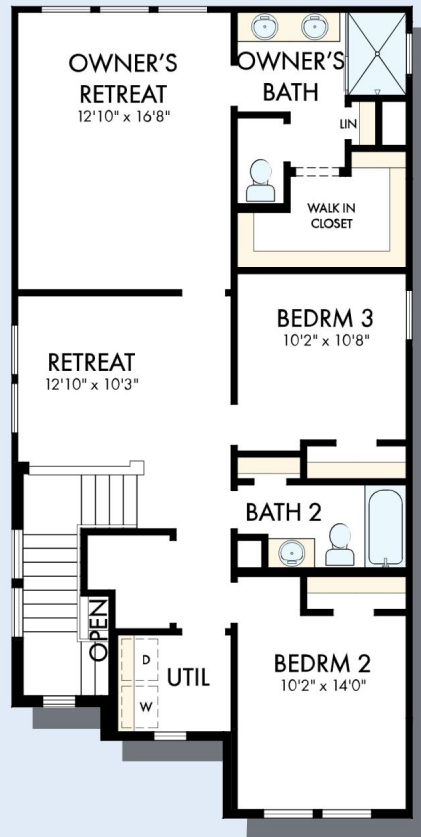
# THE JOSHUA



OPTIONAL SLIDE-IN TUB  
WITH SHOWER AT  
OWNER'S BATH



OPTIONAL SUPER SHOWER  
AT OWNER'S BATH



SECOND FLOOR

For additional options, please visit [DavidWeekleyHomes.com](http://DavidWeekleyHomes.com)

See a David Weekley Homes Sales Consultant for details.  
Prices, plans, dimensions, features, specifications, materials,  
and availability of homes or communities are subject to  
change without notice or obligation. Illustrations are artist's  
depictions only and may differ from completed improvements.  
Copyright © 2026 David Weekley Homes - All Rights Reserved.  
Tampa, FL



## DavidWeekleyHomes.com

