

# THE TOWNSMAN



Exterior C

2,153 - 3,523 sq. ft.

3 - 5 Bedrooms

2 - 3 Full Baths

2 - 3 Car Garage



Exterior D

**Crystal W.**



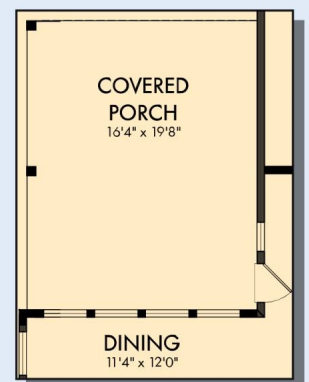
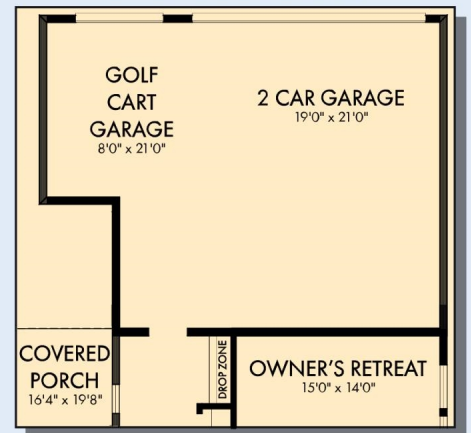
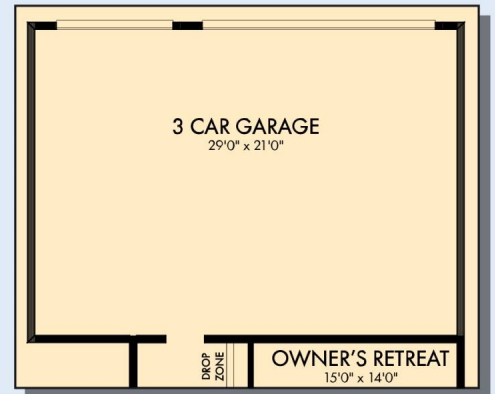
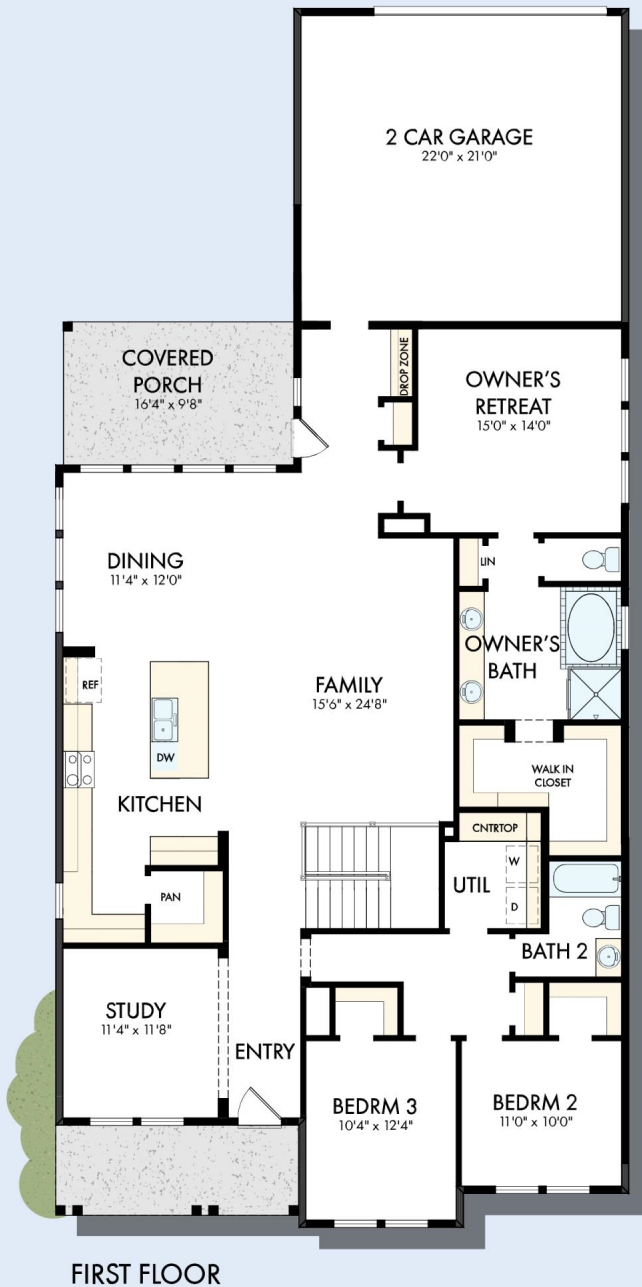
### Welcome Home

My DWHome experience has been truly 5-stars! From a floorplan concept, reserving a lot filled with dirt, the homebuilding project, to "Welcome Home", the entire process has been amazing. The team provided regular feedback and were always available to address questions and concerns. I was sold on the quality features. The entire team's availability and service has been exceptional before and after closing. Looking forward to enjoying our new home and neighbors for many years to come!

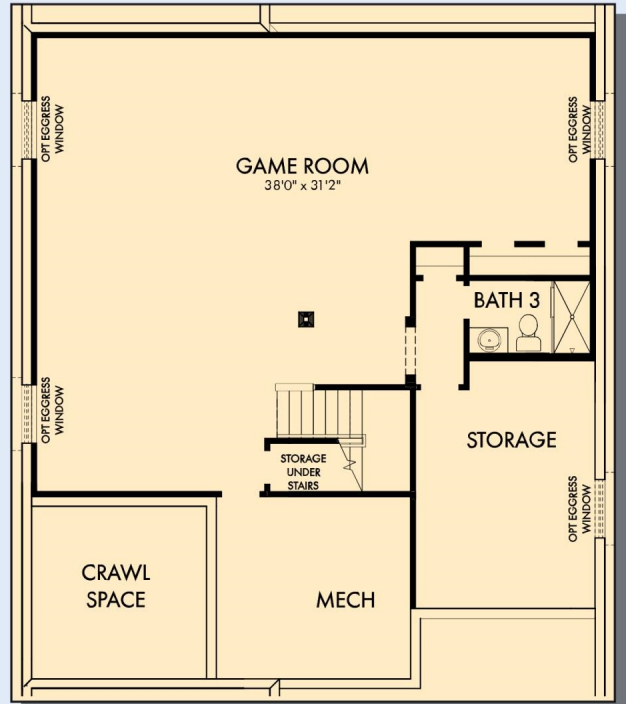
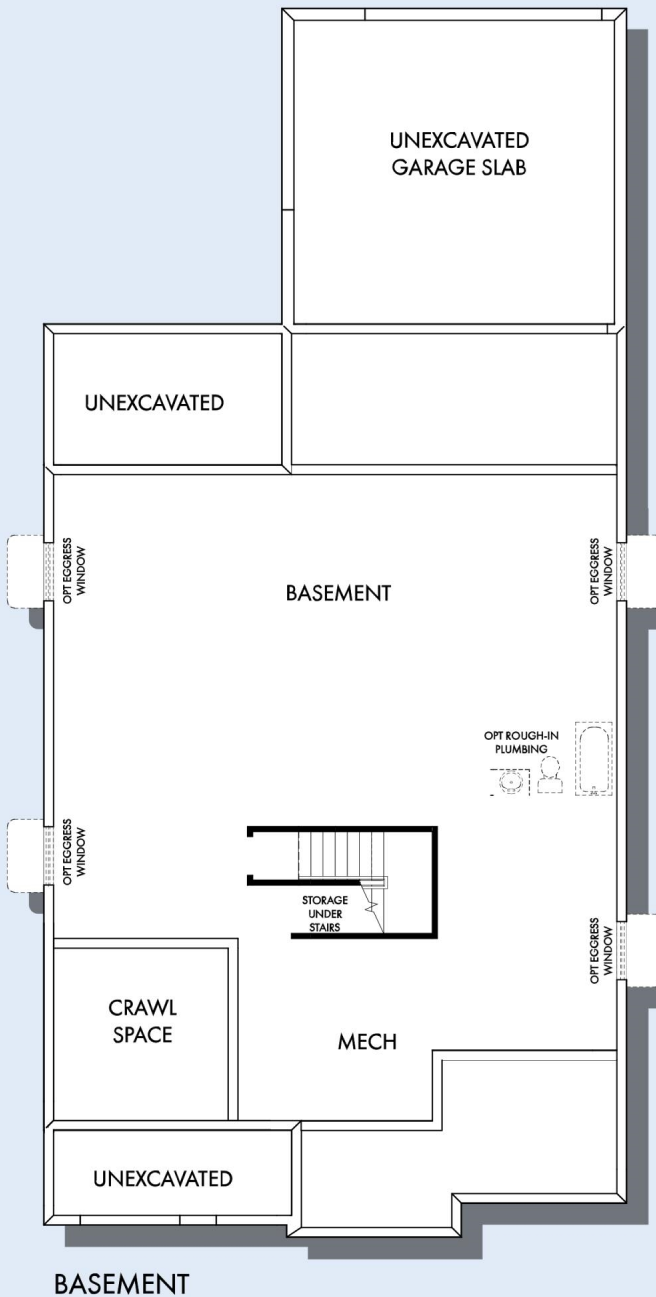
**David Weekley  
Homes**

# THE TOWNSMAN

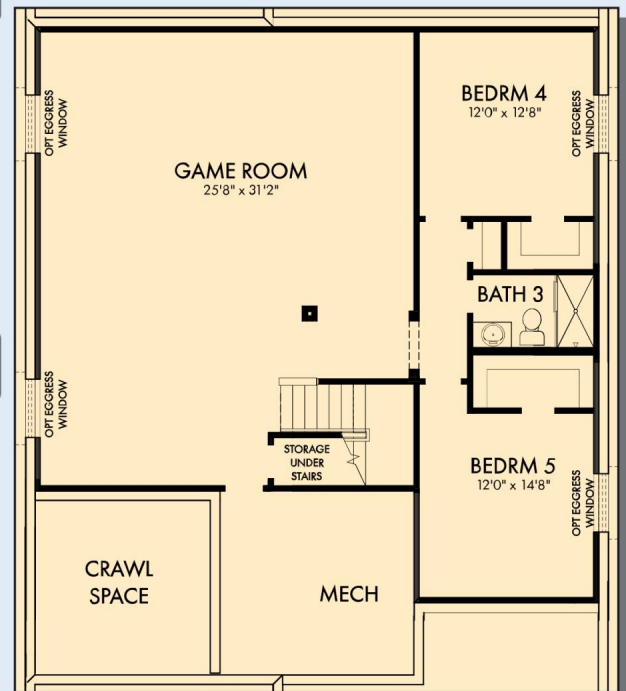
2,153 - 3,523 sq. ft. • 3 - 5 Bedrooms • 2 - 3 Full Baths • 2 - 3 Car Garage



# THE TOWNSMAN



OPTIONAL GAME ROOM WITH BATH 3 AT BASEMENT



OPTIONAL GAME ROOM WITH BEDROOM 4,5 AND BATH 3 AT BASEMENT

For additional options, please visit [DavidWeekleyHomes.com](http://DavidWeekleyHomes.com)

See a David Weekley Homes Sales Consultant for details. Prices, plans, dimensions, features, specifications, materials, and availability of homes or communities are subject to change without notice or obligation. Illustrations are artist's depictions only and may differ from completed improvements. Copyright © 2026 David Weekley Homes - All Rights Reserved. Indianapolis, IN

**DavidWeekleyHomes.com**

