

THE CORALBERRY II



Exterior B

3,083 - 4,659 sq. ft.

5 - 7 Bedrooms

3 - 5 Full Baths

4 Car Garage



Exterior C

Sandra A.



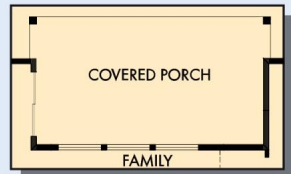
Best Builder Around

We have loved DW homes ever since our mother bought one. The quality of their work, attention to detail and willingness to respond to questions is top notch. The biggest thing we love about DW is their focus on customer service. They are not your typical builder who meets with you to get a check and forgets about you till walk thru. They are your partner through the entire process. Each step of the way they know they are building your dream house and really treat you like family. I would recommend them hands down. My husband sells real estate and has dealt with numerous builders around town. He always directs his clients to DW and signs their praises.

**David Weekley
Homes**

THE CORALBERRY II

3,083 - 4,659 sq. ft. • 5 - 7 Bedrooms • 3 - 5 Full Baths • 4 Car Garage



OPTIONAL EXTENDED COVERED PORCH



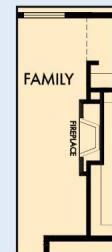
OPTIONAL FREESTANDING TUB WITH SEPARATE SHOWER AT OWNER'S BATH



FIRST FLOOR



OPTIONAL SUPER SHOWER AT OWNER'S BATH



OPTIONAL WALL FIREPLACE AT FAMILY

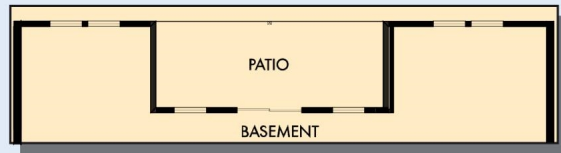
THE CORALBERRY II



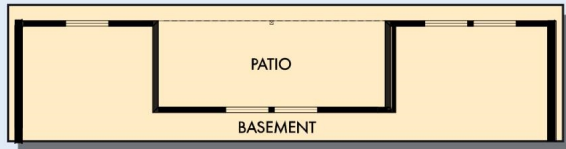
For additional options, please visit DavidWeekleyHomes.com

DavidWeekleyHomes.com

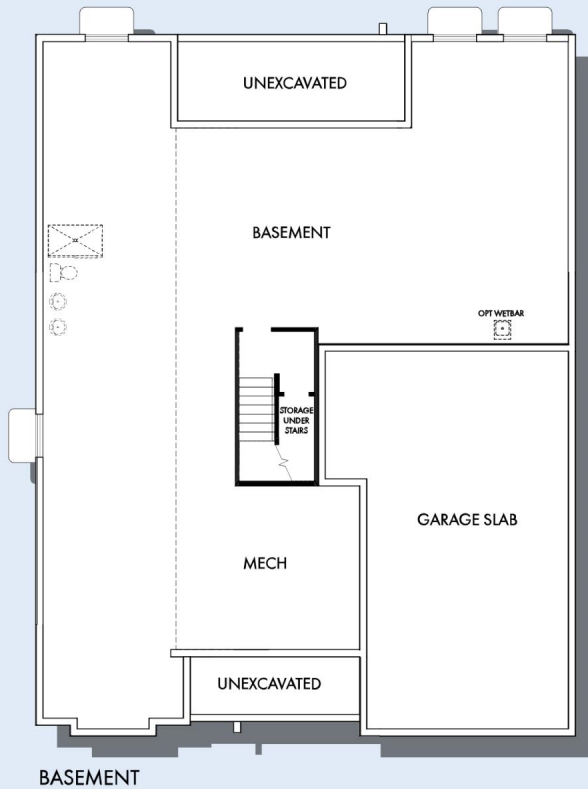
THE CORALBERRY II



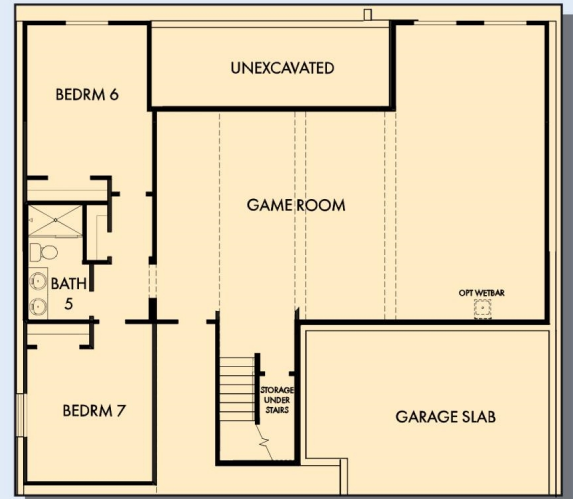
OPTIONAL WALKOUT BASEMENT



OPTIONAL DAYLIGHT BASEMENT



BASEMENT



OPTIONAL FINISHED BASEMENT WITH OPTIONAL GAME ROOM, BEDROOM 6, BEDROOM 7, AND BATH 5



OPTIONAL WETBAR
AT GAME ROOM



OPTIONAL ALTERNATE WETBAR
AT GAME ROOM

For additional options, please visit DavidWeekleyHomes.com

DavidWeekleyHomes.com

See a David Weekley Homes Sales Consultant for details.
Prices, plans, dimensions, features, specifications, materials,
and availability of homes or communities are subject to
change without notice or obligation. Illustrations are artist's
depictions only and may differ from completed improvements.
Copyright © 2026 David Weekley Homes - All Rights Reserved.
Denver, CO

