

THE FLEMING



Exterior A

3,544 - 3,567 sq. ft.

5 Bedrooms

3 Full Baths

1 Half Bath

2 - 3 Car Garage



Exterior B

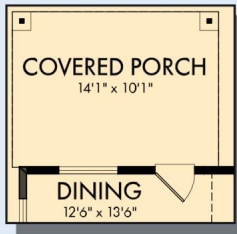


Exterior E

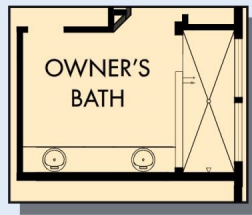
David Weekley
Homes

THE FLEMING

3,544 - 3,567 sq. ft. • 5 Bedrooms • 3 Full Baths • 1 Half Bath • 2 - 3 Car Garage



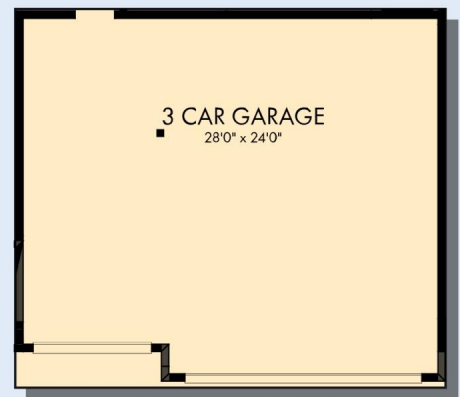
OPTIONAL COVERED PORCH AT DINING



OPTIONAL SUPER SHOWER AT OWNER'S BATH



OPTIONAL EXTENDED OWNER'S RETREAT

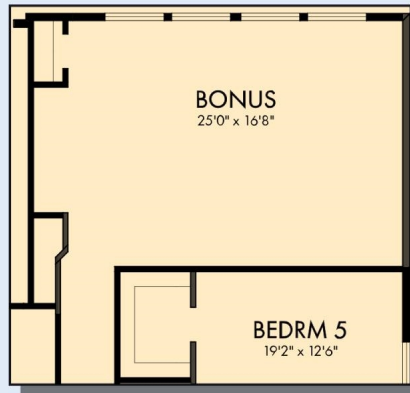


OPTIONAL 3 CAR GARAGE



FIRST FLOOR

THE FLEMING



OPTIONAL BONUS



SECOND FLOOR

For additional options, please visit DavidWeekleyHomes.com

See a David Weekley Homes Sales Consultant for details. Prices, plans, dimensions, features, specifications, materials, and availability of homes or communities are subject to change without notice or obligation. Illustrations are artist's depictions only and may differ from completed improvements. Copyright © 2026 David Weekley Homes - All Rights Reserved. Houston, TX

DavidWeekleyHomes.com

