

# THE RICHARD GREEN



Exterior A

2,181 - 2,183 sq. ft.

3 - 4 Bedrooms

2 Full Baths

1 Half Bath

2 Car Garage



Exterior B

**Greg and Jane**



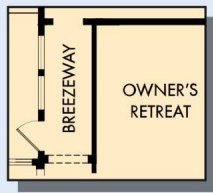
### **Exceptional service and experience!**

We have been fortunate enough to build several new homes and this was by far the best experience that we've encountered. We actually debated whether or not we wanted to go through the home building process again or simply purchase a pre-owned home or a finished new home. So pleased we built! Our Weekley team (sales associate, design consultant and builder) was very professional, courteous, attentive, responsive and pro-active from beginning to end. They've all become our adopted kids! Great overall experience!

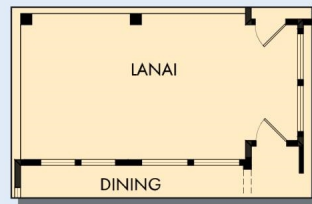
**David Weekley  
Homes**

# THE RICHARD GREEN

2,181 - 2,183 sq. ft. • 3 - 4 Bedrooms • 2 Full Baths • 1 Half Bath • 2 Car Garage



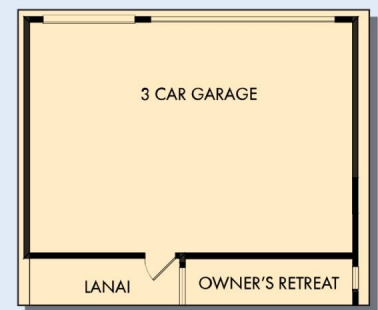
OPTIONAL BREEZEWAY  
AT OWNER'S RETREAT



OPTIONAL EXTENDED LANAI  
AT DINING



OPTIONAL DROP-IN TUB  
WITH SEPARATE  
SHOWER AT  
OWNER'S BATH



OPTIONAL 3 CAR GARAGE



OPTIONAL EXTENDED  
BEDROOM 2 AND 3

B381 in 4495 JAC

For additional options, please visit [DavidWeekleyHomes.com](http://DavidWeekleyHomes.com)

9/26/2024



See a David Weekley Homes Sales Consultant for details. Prices, plans, dimensions, features, specifications, materials, and availability of homes or communities are subject to change without notice or obligation. Illustrations are artist's depictions only and may differ from completed improvements. Copyright © 2024 David Weekley Homes - All Rights Reserved. Jacksonville, FL

**DavidWeekleyHomes.com**