

THE THRIVE



Exterior A

1,811 - 1,829 sq. ft.

3 Bedrooms

2 Full Baths

1 Half Bath

2 Car Garage



Exterior B

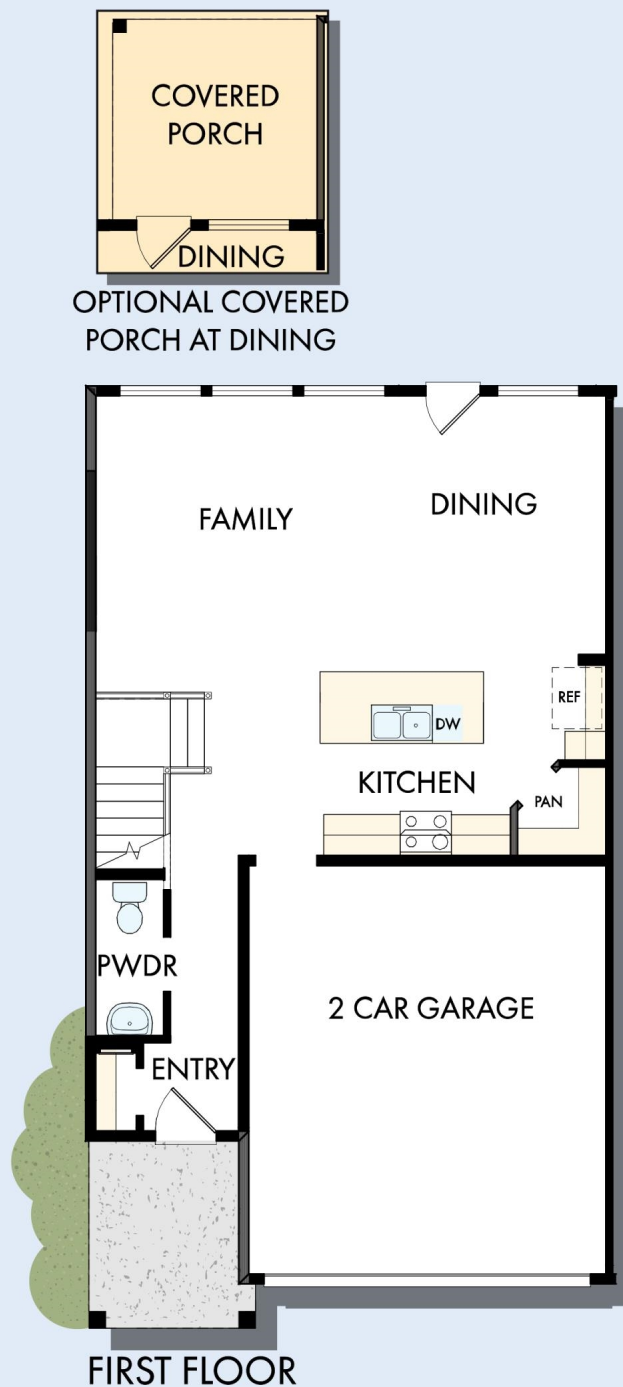


Exterior C

David Weekley
Homes

THE THRIVE

1,811 - 1,829 sq. ft. • 3 Bedrooms • 2 Full Baths • 1 Half Bath • 2 Car Garage



A197 in 2218 AUS

For additional options, please visit DavidWeekleyHomes.com

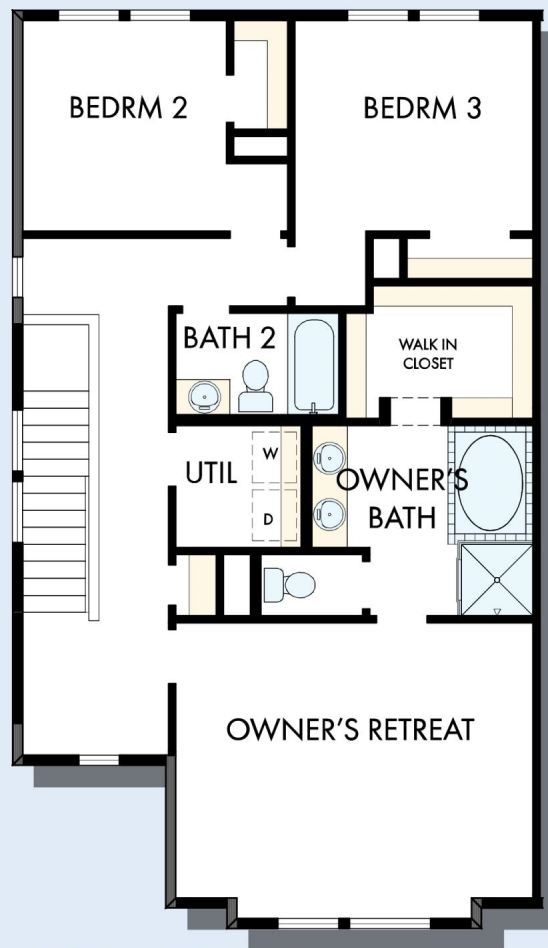
6/20/2025

DavidWeekleyHomes.com

THE THRIVE



OPTIONAL SUPER
SHOWER AT
OWNER'S BATH



SECOND FLOOR

For additional options, please visit DavidWeekleyHomes.com



See a David Weekley Homes Sales Consultant for details.
Prices, plans, dimensions, features, specifications, materials,
and availability of homes or communities are subject to
change without notice or obligation. Illustrations are artist's
depictions only and may differ from completed improvements.
Copyright © 2025 David Weekley Homes - All Rights Reserved.
Austin, TX

DavidWeekleyHomes.com