

THE SKIPPER



Exterior A

2,640 - 2,642 sq. ft.

5 Bedrooms

3 Full Baths

3 Car Garage



Exterior B

Greg and Jane



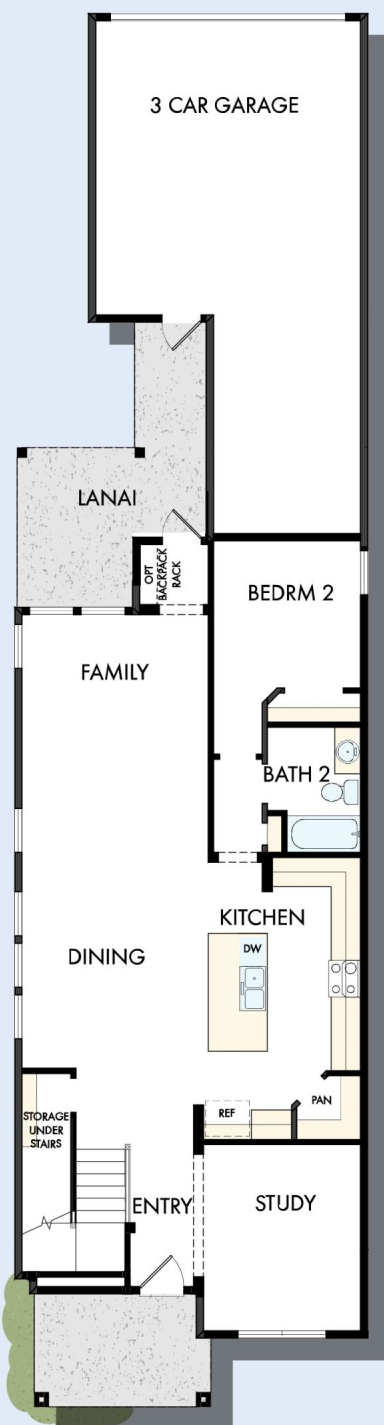
Exceptional service and experience!

We have been fortunate enough to build several new homes and this was by far the best experience that we've encountered. We actually debated whether or not we wanted to go through the home building process again or simply purchase a pre-owned home or a finished new home. So pleased we built! Our Weekley team (sales associate, design consultant and builder) was very professional, courteous, attentive, responsive and pro-active from beginning to end. They've all become our adopted kids! Great overall experience!

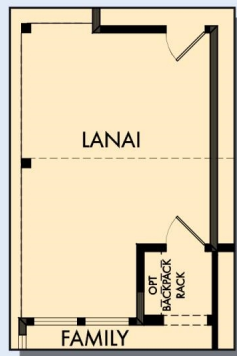
**David Weekley
Homes**

THE SKIPPER

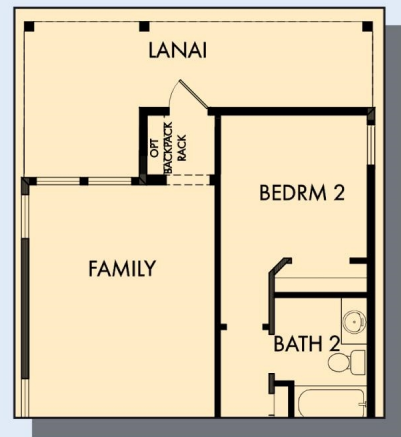
2,640 - 2,642 sq. ft. • 5 Bedrooms • 3 Full Baths • 3 Car Garage



FIRST FLOOR

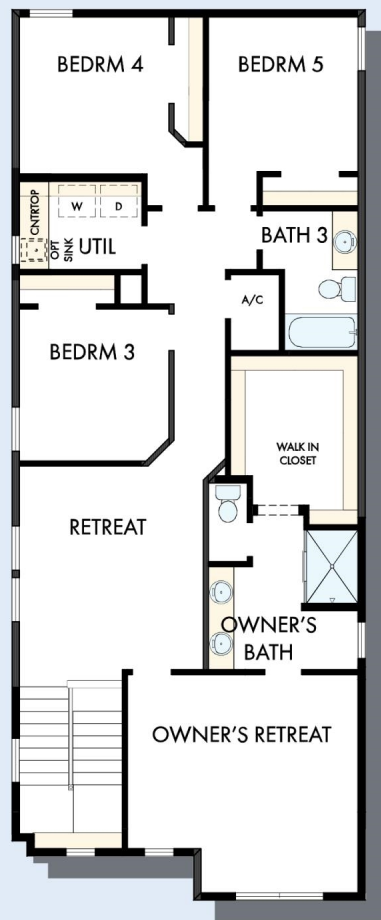


OPTIONAL EXTENDED
LANAI AT FAMILY



FIRST FLOOR WITH OPTIONAL
DETACHED 2 CAR GARAGE

THE SKIPPER



SECOND FLOOR



OPTIONAL SUPER
SHOWER
AT OWNER'S BATH



OPTIONAL FREE
STANDING TUB WITH
SEPARATE SHOWER
AT OWNER'S BATH

For additional options, please visit DavidWeekleyHomes.com



See a David Weekley Homes Sales Consultant for details.
Prices, plans, dimensions, features, specifications, materials,
and availability of homes or communities are subject to
change without notice or obligation. Illustrations are artist's
depictions only and may differ from completed improvements.
Copyright © 2025 David Weekley Homes - All Rights Reserved.
Orlando, FL

DavidWeekleyHomes.com