

THE ELSNER II



Exterior J

2,385 - 2,393 sq. ft.

3 - 4 Bedrooms

2 Full Baths

1 Half Bath

2 Car Garage



Exterior K

Gigi and Papa



THE BESTest - Better than all the rest!

What an awesome and personal family-oriented company! From touring model homes to selecting "THE ONE" just for us, the experience was delightful and amazing! The entire David Weekley team has been exceptionally wonderful and always available to address any issues we encountered. We have been amazed and impressed by the "Service after the Sale" approach by the David Weekley staff. We would recommend David Weekley homes to anyone. We feel like we are an important member of the Weekley family!

**David Weekley
Homes**

THE ELSNER II

2,385 - 2,393 sq. ft. • 3 - 4 Bedrooms • 2 Full Baths • 1 Half Bath • 2 Car Garage



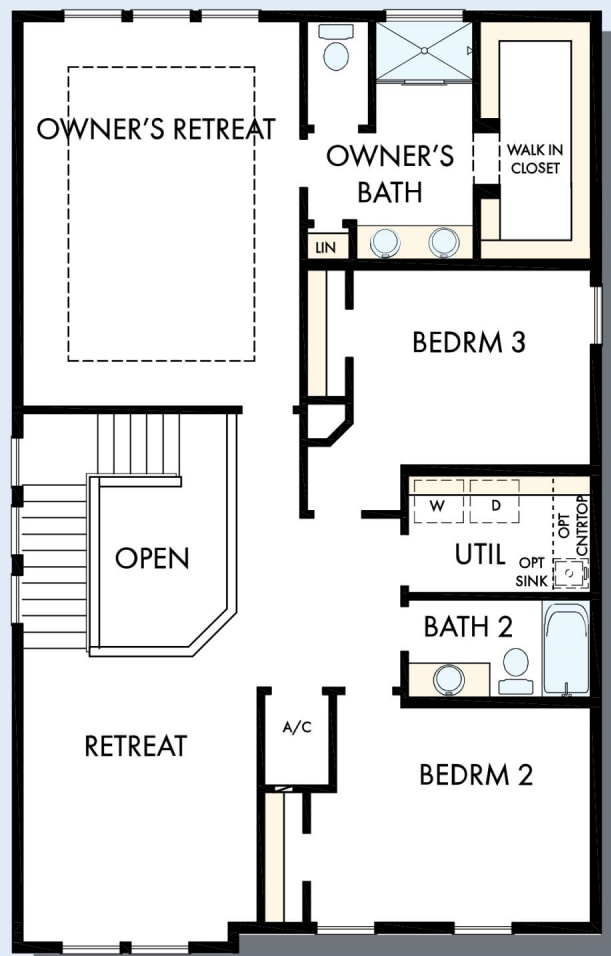
B519 in 4934 JAC

For additional options, please visit DavidWeekleyHomes.com

4/23/2025

DavidWeekleyHomes.com

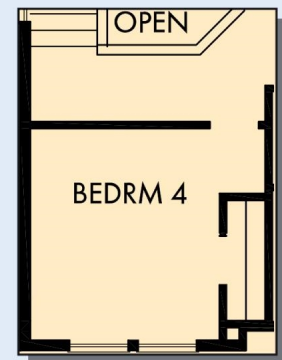
THE ELSNER II



SECOND FLOOR



OPTIONAL SEPARATE
TUB AND SHOWER AT
OWNER'S BATH



OPTIONAL BEDROOM 4
AT RETREAT

For additional options, please visit DavidWeekleyHomes.com



See a David Weekley Homes Sales Consultant for details.
Prices, plans, dimensions, features, specifications, materials,
and availability of homes or communities are subject to
change without notice or obligation. Illustrations are artist's
depictions only and may differ from completed improvements.
Copyright © 2025 David Weekley Homes - All Rights Reserved.
Jacksonville, FL

DavidWeekleyHomes.com