

THE WAYMAN



Exterior A

2,183 - 3,793 sq. ft.

2 - 4 Bedrooms

2 - 3 Full Baths

1 Half Bath

2 Car Garage



Exterior B



Exterior C

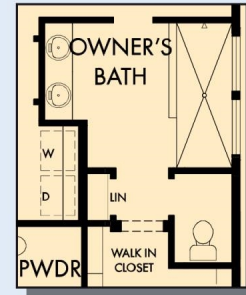
David Weekley
Homes

THE WAYMAN

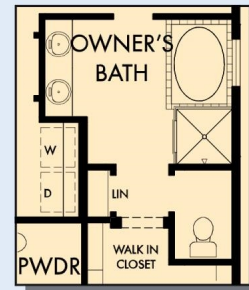
2,183 - 3,793 sq. ft. • 2 - 4 Bedrooms • 2 - 3 Full Baths • 1 Half Bath • 2 Car Garage



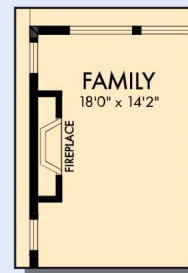
FIRST FLOOR



OPTIONAL SUPER SHOWER AT OWNER'S BATH

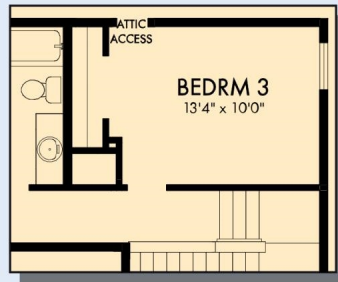


DROP-IN TUB WITH SEPARATE SHOWER AT OWNER'S BATH



OPTIONAL WALL FIREPLACE AT FAMILY

THE WAYMAN



OPTIONAL BEDROOM 3 AT
RETREAT

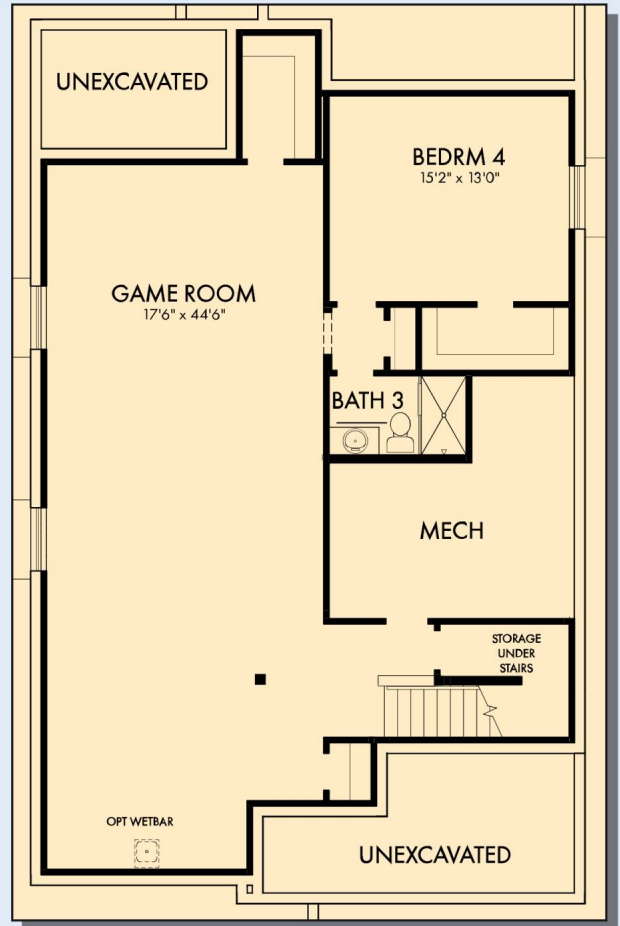
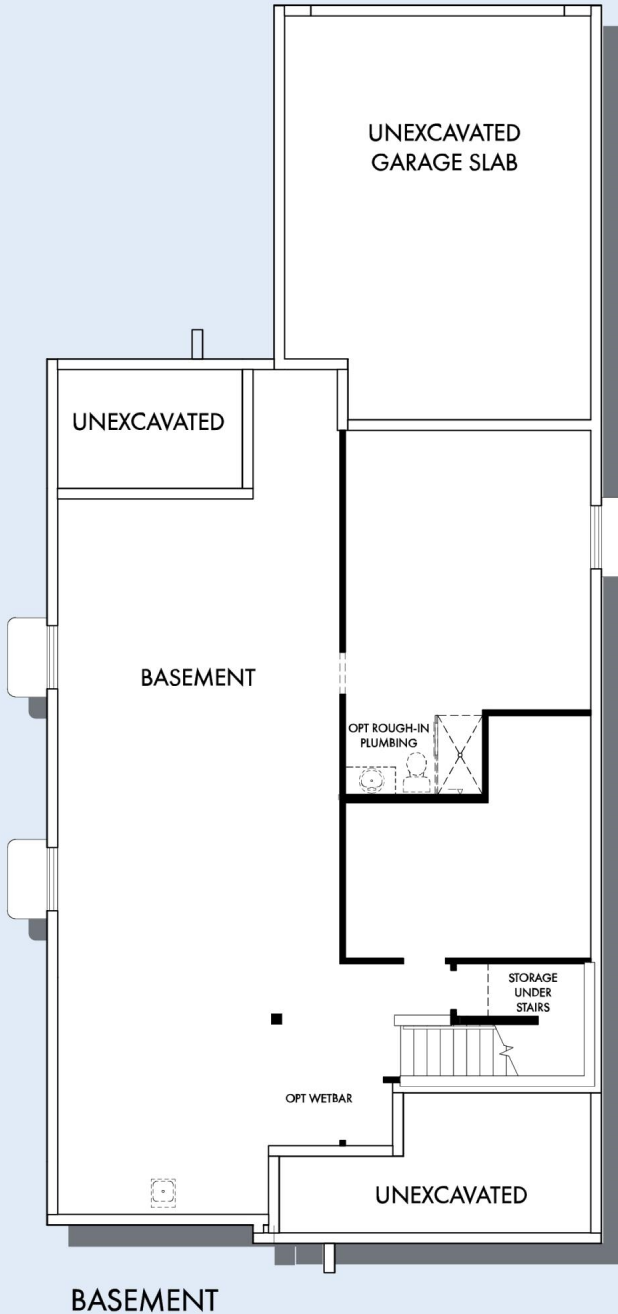


SECOND FLOOR

For additional options, please visit DavidWeekleyHomes.com

DavidWeekleyHomes.com

THE WAYMAN



OPTIONAL GAME ROOM WITH BEDROOM 4 AND BATH 3



OPTIONAL WET BAR AT GAME ROOM

For additional options, please visit DavidWeekleyHomes.com

See a David Weekley Homes Sales Consultant for details. Prices, plans, dimensions, features, specifications, materials, and availability of homes or communities are subject to change without notice or obligation. Illustrations are artist's depictions only and may differ from completed improvements. Copyright © 2026 David Weekley Homes - All Rights Reserved. Salt Lake City, UT

DavidWeekleyHomes.com

