

# THE FLOWER MOUND



Exterior A

2,803 sq. ft.

4 Bedrooms

3 Full Baths

3 Car Garage



Exterior B

**Meg S.**



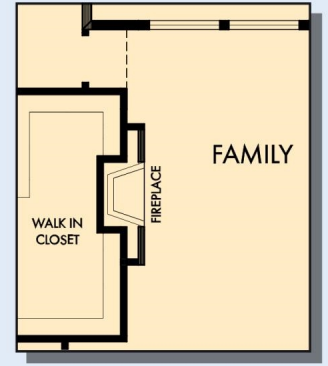
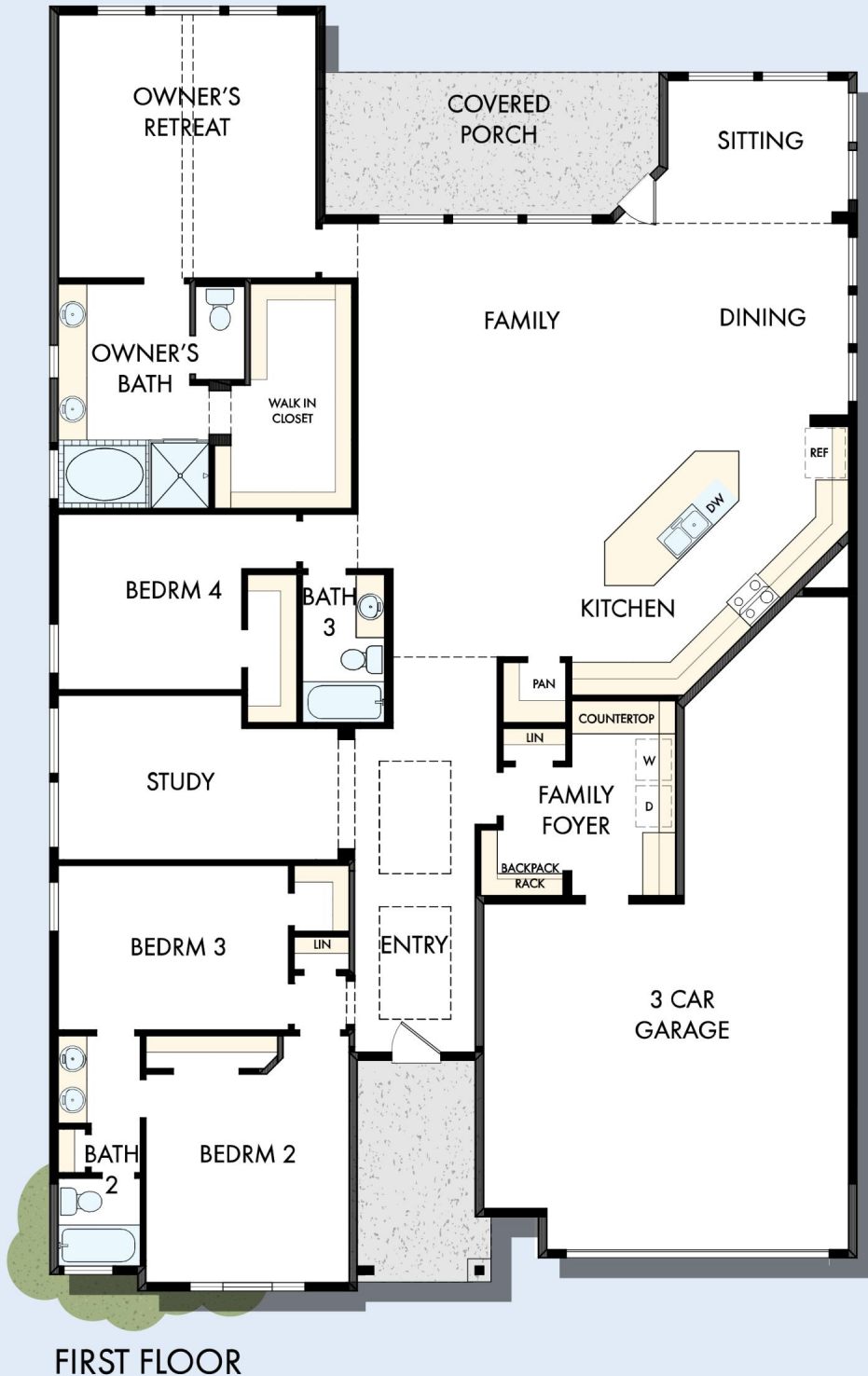
### **Truly treated us like family!!!**

We enjoyed every part of the home building process. It was amazing! Our builder was always keeping us informed and really went above and beyond to ensure that we love our home. Our warranty rep is outstanding and continues to take care of our every need. I couldn't have asked for a better experience. Our builder and warranty rep continue to be there for us as a family. While our interactions with the DW Family have been highly professional, we are also lucky enough to be able to call them some of our greatest friends! Wouldn't change a thing!

**David Weekley  
Homes**

# THE FLOWER MOUND

2,803 sq. ft. • 4 Bedrooms • 3 Full Baths • 3 Car Garage



OPTIONAL FIREPLACE  
AT FAMILY



OPTIONAL SUPER SHOWER  
AT OWNER'S BATH

T065 in 2244 AUS

For additional options, please visit [DavidWeekleyHomes.com](http://DavidWeekleyHomes.com)

7/29/2025



See a David Weekley Homes Sales Consultant for details. Prices, plans, dimensions, features, specifications, materials, and availability of homes or communities are subject to change without notice or obligation. Illustrations are artist's depictions only and may differ from completed improvements. Copyright © 2025 David Weekley Homes - All Rights Reserved. Austin, TX

**DavidWeekleyHomes.com**