

# THE LOTUS



Exterior A

2,975 - 4,422 sq. ft.

3 - 6 Bedrooms

2 - 5 Full Baths

1 Half Bath

3 - 4 Car Garage



Exterior B

**Jordan**



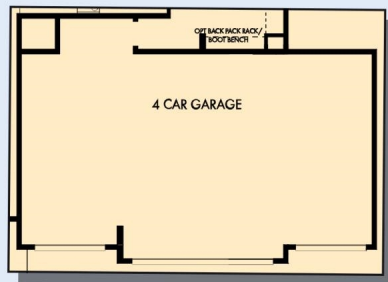
**Greatly exceeded every expectation! A+++!**

The entire experience was excellent from the first day I showed up to look at houses. The whole team came together to provide a truly quality house that I will be living in for years to come. Kajal helped me purchase the house and coordinated all meetings. She was very cheerful and professional at all times and I could tell that she cared about her clients and my family. Jeff and Robbie were builders that always went the extra mile to ensure total customer satisfaction. Jeff was very helpful and I am grateful to his management and know that I will be moving in to a house that is built right with a great attention to detail... Ashley also provided Kajal with assistance whenever Kajal was not available. I could not be happier with everyone involved in building this house. David Weekley is a great company and I would enthusiastically recommend them to others needing a quality house built in the future. Thank you for such a great experience and I hope that this company continues to grow.

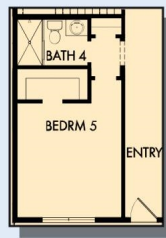
**David Weekley  
Homes**

# THE LOTUS

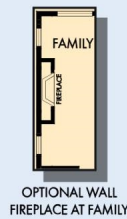
2,975 - 4,422 sq. ft. • 3 - 6 Bedrooms • 2 - 5 Full Baths • 1 Half Bath • 3 - 4 Car Garage



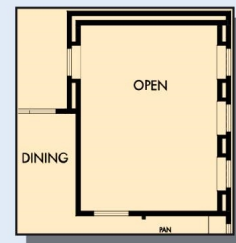
OPTIONAL 4 CAR GARAGE



OPTIONAL BEDROOM 5  
WITH BATH 4 AT STUDY



OPTIONAL WALL  
FIREPLACE AT FAMILY



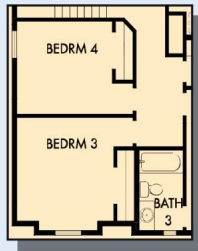
FIRST FLOOR WITH OPTIONAL  
ATHLETIC COURT



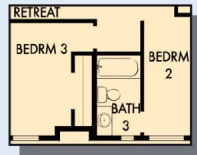
FIRST FLOOR



# THE LOTUS



OPTIONAL BEDROOM 4 WITH  
BATH 3 AT RETREAT



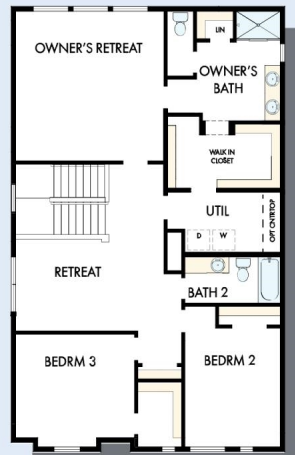
OPTIONAL BATH 3



OPTIONAL SUPER  
SHOWER AT  
OWNER'S BATH



OPTIONAL FREE  
STANDING TUB WITH  
SEPARATE SHOWER  
AT OWNER'S BATH



SECOND FLOOR

For additional options, please visit [DavidWeekleyHomes.com](http://DavidWeekleyHomes.com)

**DavidWeekleyHomes.com**

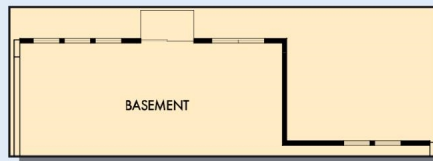
# THE LOTUS



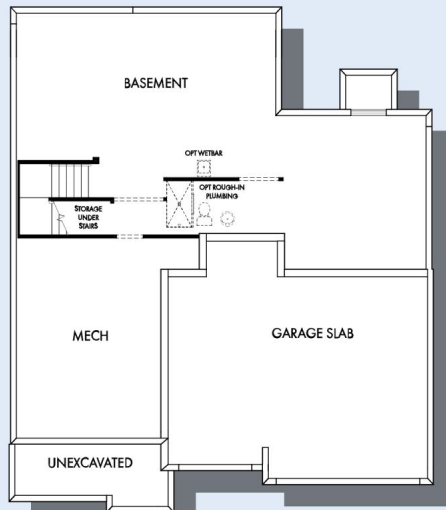
OPTIONAL WET BAR  
AT GAME ROOM



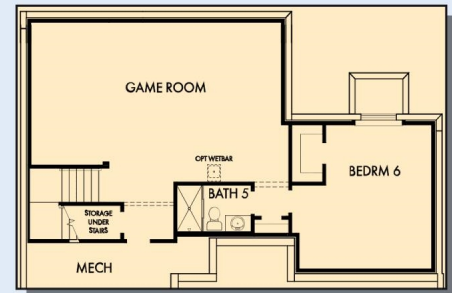
OPTIONAL WALL FIREPLACE  
AT GAME ROOM



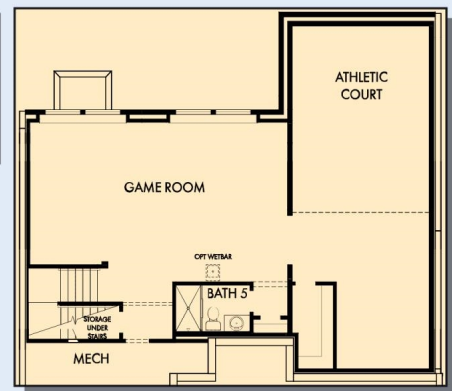
OPTIONAL WALKOUT BASEMENT



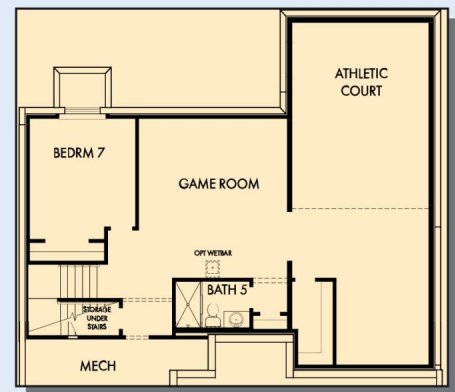
BASEMENT



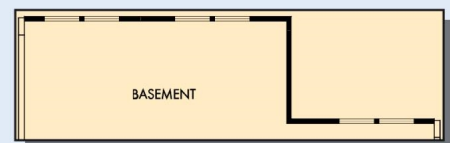
OPTIONAL GAME ROOM WITH BEDROOM 6 AND BATH 5 AT BASEMENT



OPTIONAL GAME ROOM AND BATH 5 WITH ATHLETIC  
COURT AT BASEMENT



OPTIONAL GAME ROOM, BEDROOM 7 AND BATH 5  
WITH ATHLETIC COURT AT BASEMENT



OPTIONAL DAYLIGHT BASEMENT

For additional options, please visit [DavidWeekleyHomes.com](http://DavidWeekleyHomes.com)

**DavidWeekleyHomes.com**



See a David Weekley Homes Sales Consultant for details. Prices, plans, dimensions, features, specifications, materials, and availability of homes or communities are subject to change without notice or obligation. Illustrations are artist's depictions only and may differ from completed improvements. Copyright © 2025 David Weekley Homes - All Rights Reserved. Minneapolis/St. Paul, MN