

# THE CRESTWOOD



Exterior A



Exterior B

2,299 - 2,893 sq. ft.

3 - 5 Bedrooms

2 - 4 Full Baths

1 Half Bath

2 - 3 Car Garage

Shane



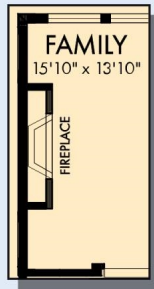
**We're living our fairytale thanks to David Weekley**

We can't say enough about the level of quality and care we received while building our home. Our builder was with us every step of the way to make sure our every need and desire was being met! The team truly went above and beyond at every turn to give us the home of our dreams! We will definitely recommend David Weekley to anyone looking to build a new home!

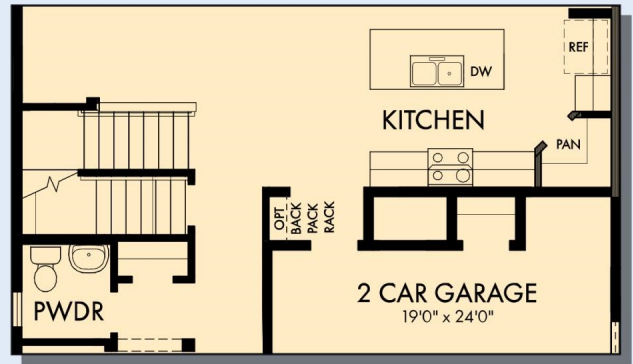
**David Weekley  
Homes**

# THE CRESTWOOD

2,299 - 2,893 sq. ft. • 3 - 5 Bedrooms • 2 - 4 Full Baths • 1 Half Bath • 2 - 3 Car Garage



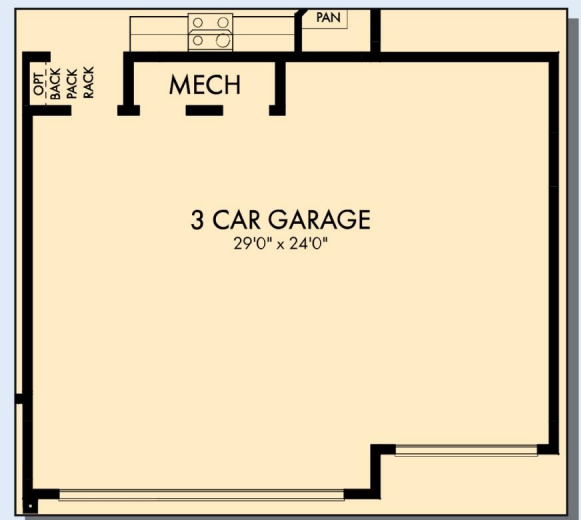
OPTIONAL  
WALL FIREPLACE  
AT FAMILY



FIRST FLOOR WITH OPTIONAL BASEMENT



FIRST FLOOR

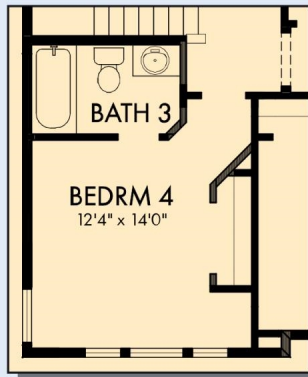


OPTIONAL 3 CAR GARAGE

# THE CRESTWOOD



OPTIONAL BEDROOM 4  
AT RETREAT



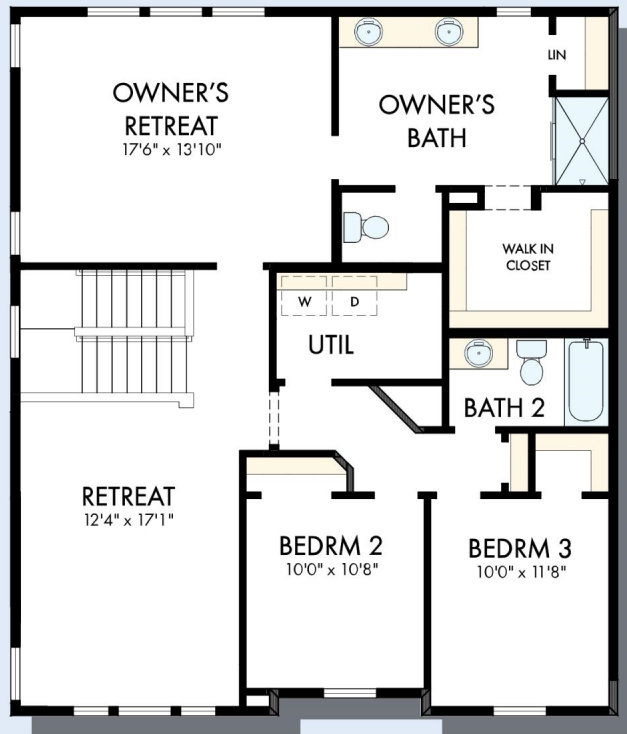
OPTIONAL BEDROOM 4  
WITH BATH 3 AT RETREAT



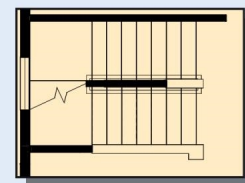
OPTIONAL SLIDE-IN TUB  
WITH SEPARATE SHOWER  
AT OWNER'S BATH



OPTIONAL SUPER SHOWER  
AT OWNER'S BATH



SECOND FLOOR

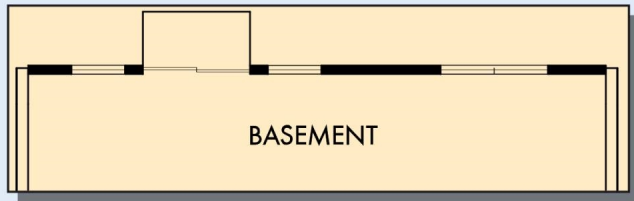


SECOND FLOOR WITH  
OPTIONAL THIRD FLOOR  
BONUS

For additional options, please visit [DavidWeekleyHomes.com](http://DavidWeekleyHomes.com)

DavidWeekleyHomes.com

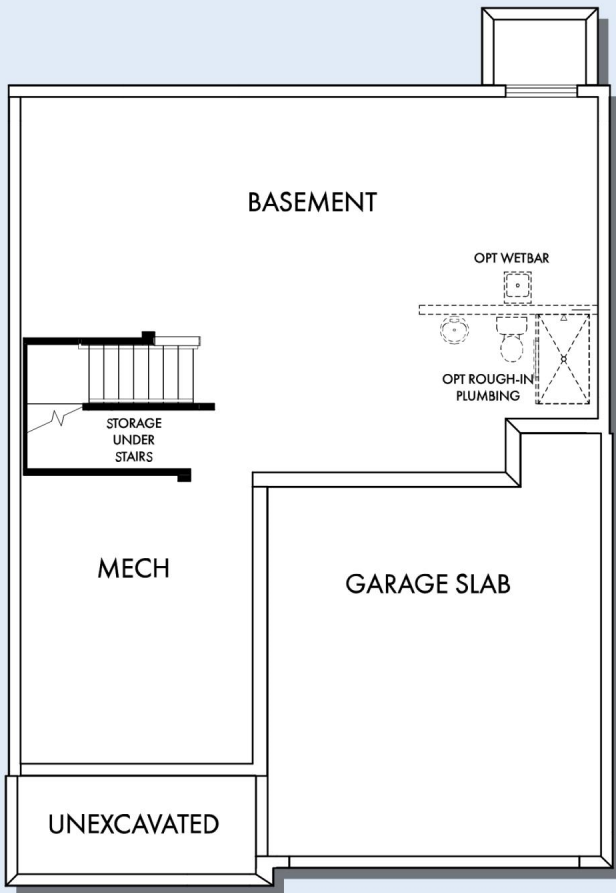
# THE CRESTWOOD



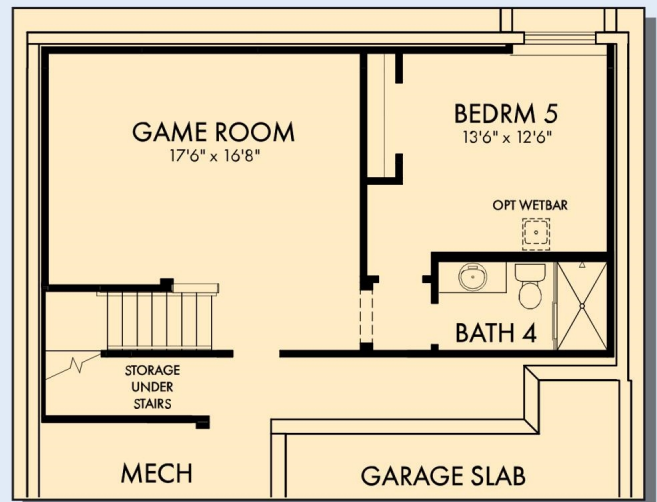
OPTIONAL WALKOUT BASEMENT



OPTIONAL DAYLIGHT BASEMENT



BASEMENT



OPTIONAL GAME ROOM WITH BEDROOM 5 AND BATH 4 AT BASEMENT

For additional options, please visit [DavidWeekleyHomes.com](http://DavidWeekleyHomes.com)

See a David Weekley Homes Sales Consultant for details. Prices, plans, dimensions, features, specifications, materials, and availability of homes or communities are subject to change without notice or obligation. Illustrations are artist's depictions only and may differ from completed improvements. Copyright © 2026 David Weekley Homes - All Rights Reserved. Minneapolis/St. Paul, MN

**DavidWeekleyHomes.com**

