

THE MCBEE



Exterior A

2,090 - 2,830 sq. ft.

4 - 5 Bedrooms

2 - 3 Full Baths

1 Half Bath

3 Car Garage



Exterior B

Rich C.



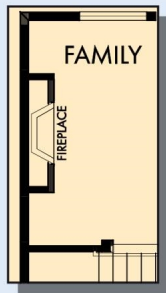
Wonderful Experience!

If there is anything that sets David Weekley apart from other builders it is their customer service. I felt like a member of the family from the first time I walked into the model, to when I received my keys and saw the wonderful housewarming presents that were left for me, up to the present when I see my salesman in the neighborhood. I felt like they really took the time to understand what I was looking for and then came through with my dream home. I would highly recommend David Weekley to anyone looking to buy and/or build a home.

**David Weekley
Homes**

THE MCBEE

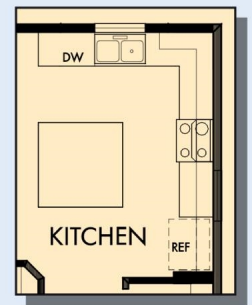
2,090 - 2,830 sq. ft. • 4 - 5 Bedrooms • 2 - 3 Full Baths • 1 Half Bath • 3 Car Garage



OPTIONAL
WALL FIREPLACE
AT FAMILY



FIRST FLOOR



OPTIONAL SUPER
KITCHEN

THE MCBEE



SECOND FLOOR

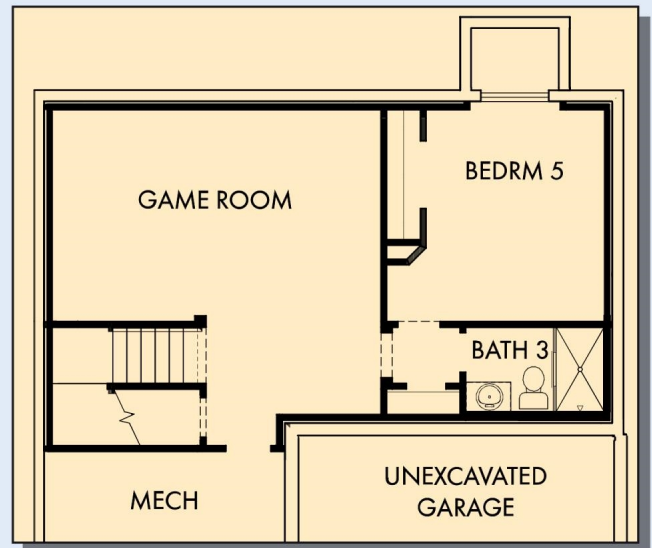
For additional options, please visit DavidWeekleyHomes.com

DavidWeekleyHomes.com

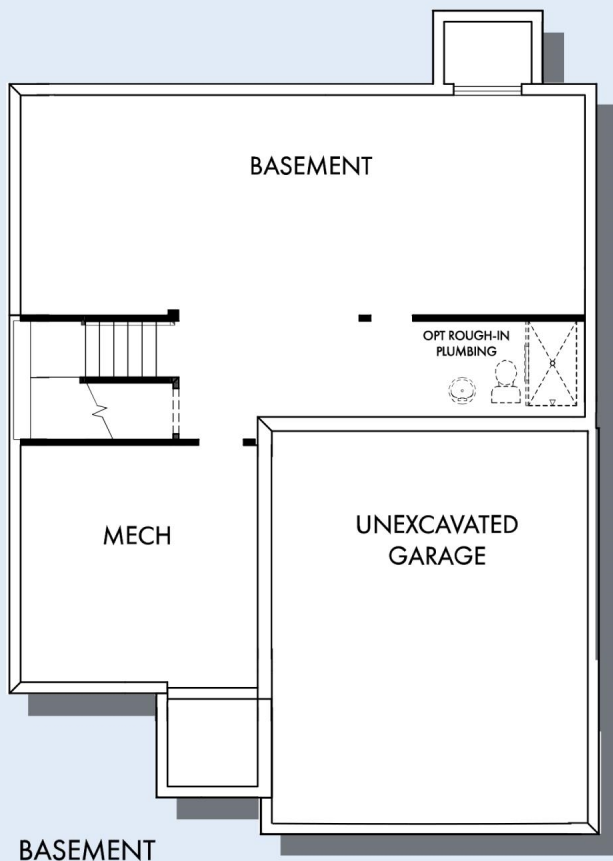
THE MCBEE



OPTIONAL DAYLIGHT AT BASEMENT



OPTIONAL FINISHED BASEMENT WITH GAME ROOM WITH BEDROOM 5 AND BATH 3



BASEMENT

For additional options, please visit DavidWeekleyHomes.com

DavidWeekleyHomes.com



See a David Weekley Homes Sales Consultant for details. Prices, plans, dimensions, features, specifications, materials, and availability of homes or communities are subject to change without notice or obligation. Illustrations are artist's depictions only and may differ from completed improvements. Copyright © 2025 David Weekley Homes - All Rights Reserved. Minneapolis/St. Paul, MN