

THE HUXLEY



Exterior A

2,124 - 2,590 sq. ft.

3 - 4 Bedrooms

2 - 3 Full Baths

1 Half Bath

2 Car Garage



Exterior B

Greg and Jane



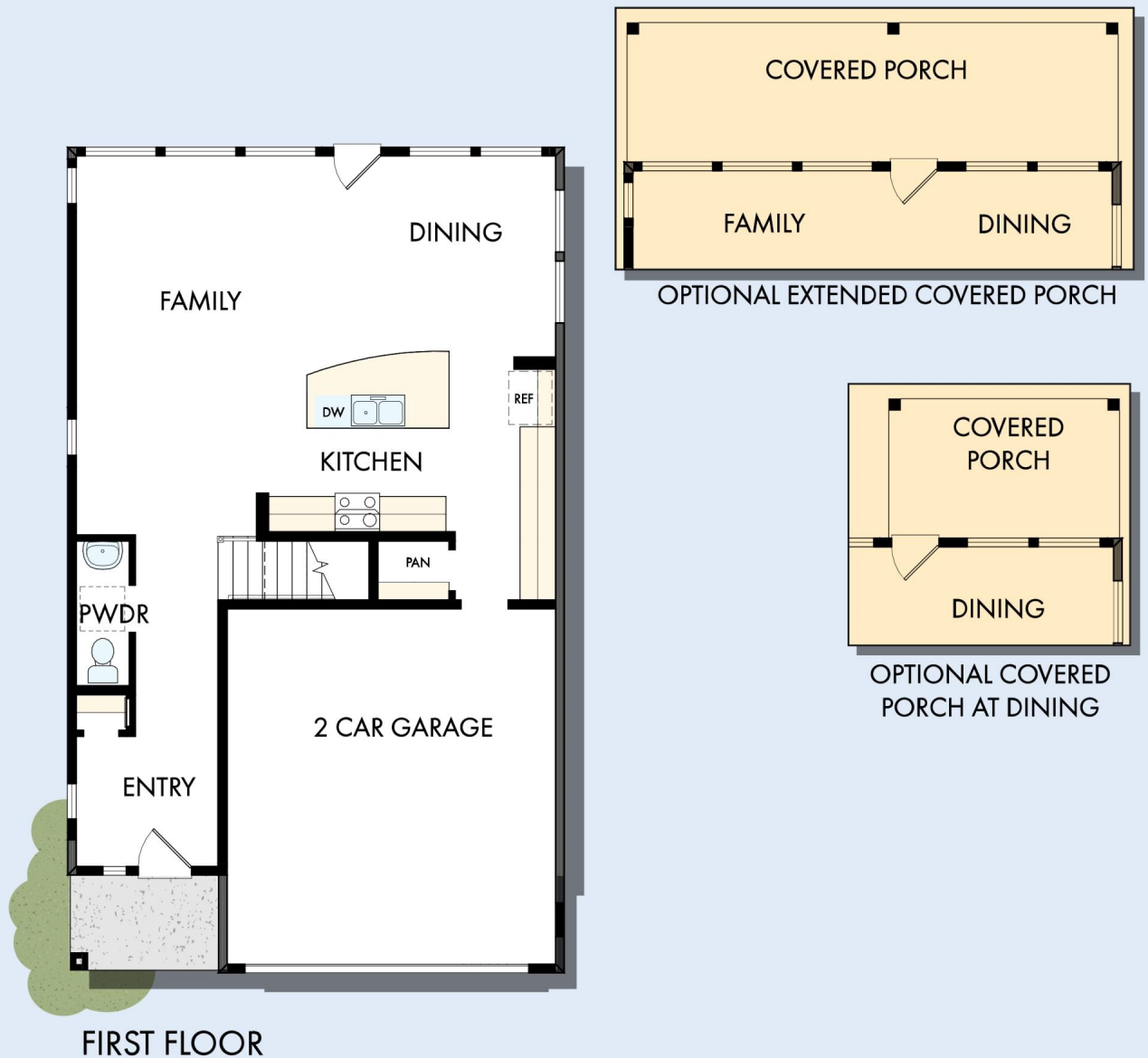
Exceptional service and experience!

We have been fortunate enough to build several new homes and this was by far the best experience that we've encountered. We actually debated whether or not we wanted to go through the home building process again or simply purchase a pre-owned home or a finished new home. So pleased we built! Our Weekley team (sales associate, design consultant and builder) was very professional, courteous, attentive, responsive and pro-active from beginning to end. They've all become our adopted kids! Great overall experience!

**David Weekley
Homes**

THE HUXLEY

2,124 - 2,590 sq. ft. • 3 - 4 Bedrooms • 2 - 3 Full Baths • 1 Half Bath • 2 Car Garage



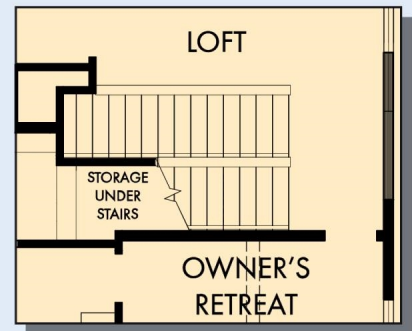
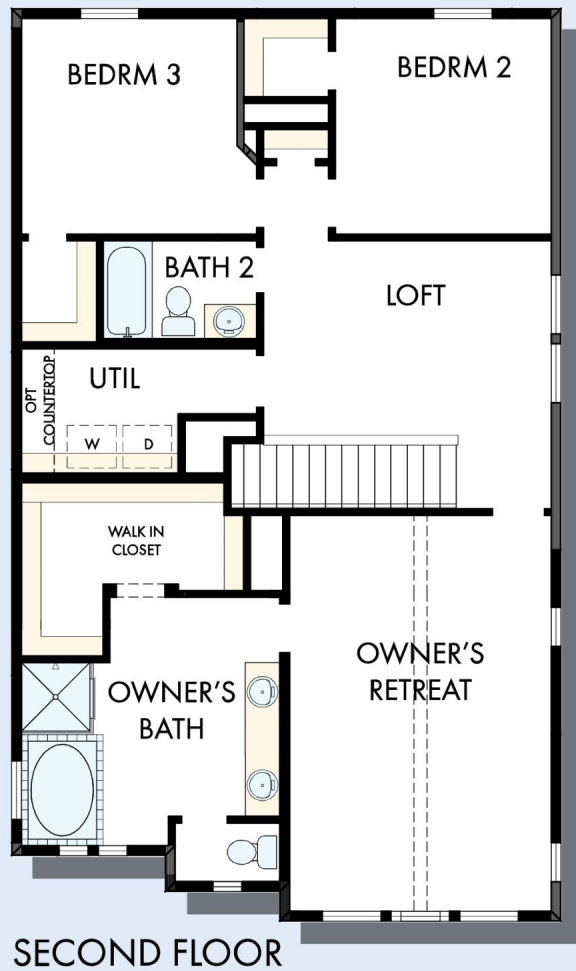
B418 in 2223 AUS

For additional options, please visit DavidWeekleyHomes.com

6/20/2025

DavidWeekleyHomes.com

THE HUXLEY



SECOND FLOOR WITH
OPTIONAL THIRD FLOOR
BONUS

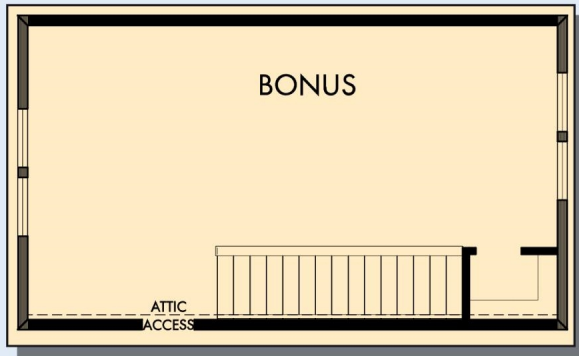


OPTIONAL SUPER
SHOWER AT
OWNER'S BATH

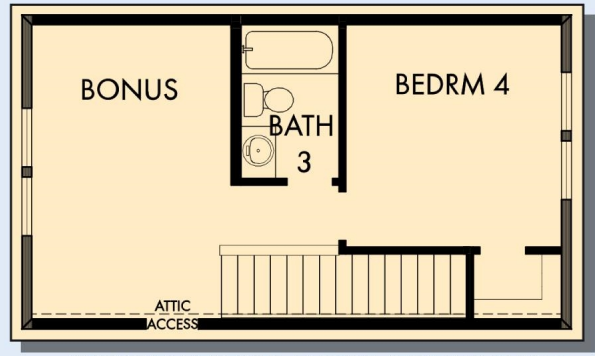
For additional options, please visit DavidWeekleyHomes.com

DavidWeekleyHomes.com

THE HUXLEY



OPTIONAL THIRD FLOOR BONUS



OPTIONAL THIRD FLOOR BONUS WITH
BEROOM 4 AND BATH 3

For additional options, please visit DavidWeekleyHomes.com



See a David Weekley Homes Sales Consultant for details.
Prices, plans, dimensions, features, specifications, materials,
and availability of homes or communities are subject to
change without notice or obligation. Illustrations are artist's
depictions only and may differ from completed improvements.
Copyright © 2025 David Weekley Homes - All Rights Reserved.
Austin, TX

DavidWeekleyHomes.com