

THE WATERBORNE

1,759 - 1,767 sq. ft.

3 Bedrooms

2 Full Baths

1 Half Bath

2 Car Garage

**David Weekley
Homes**

Crystal W.



Welcome Home

My DWHomes experience has been truly 5-stars! From a floorplan concept, reserving a lot filled with dirt, the homebuilding project, to "Welcome Home", the entire process has been amazing. The team provided regular feedback and were always available to address questions and concerns. I was sold on the quality features. The entire team's availability and service has been exceptional before and after closing. Looking forward to enjoying our new home and neighbors for many years to come!

Chelsea

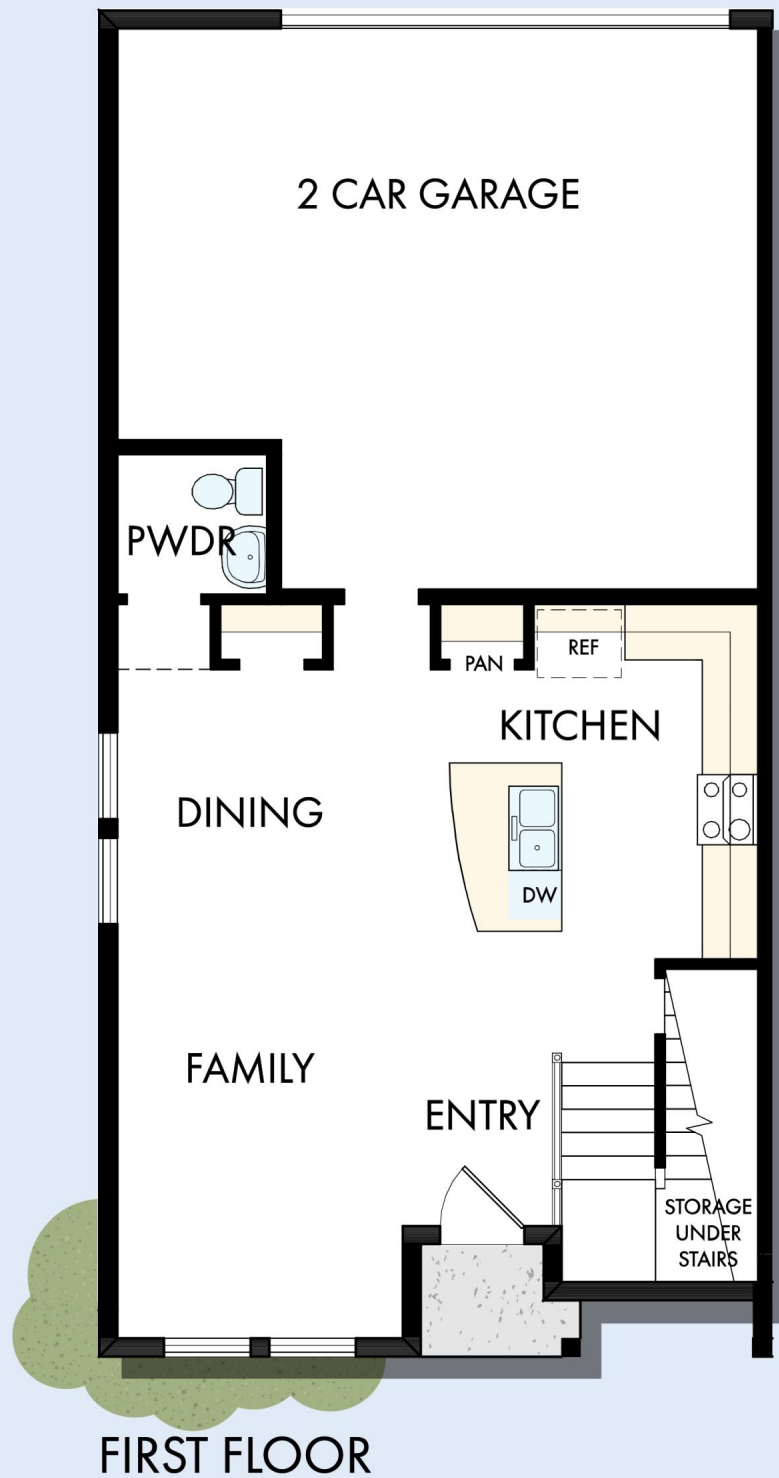


Incredible Experience, Incredible Home!

We trusted the team from Day 1 and couldn't have asked for a better experience. The attention to detail was fantastic, and we felt as if the DWH team had a personal interest in the success of our home. The process was well defined and every team member set very clear expectations. We love every inch of our home, and we'd definitely recommend DWH!

THE WATERBORNE

1,759 - 1,767 sq. ft. • 3 Bedrooms • 2 Full Baths • 1 Half Bath • 2 Car Garage



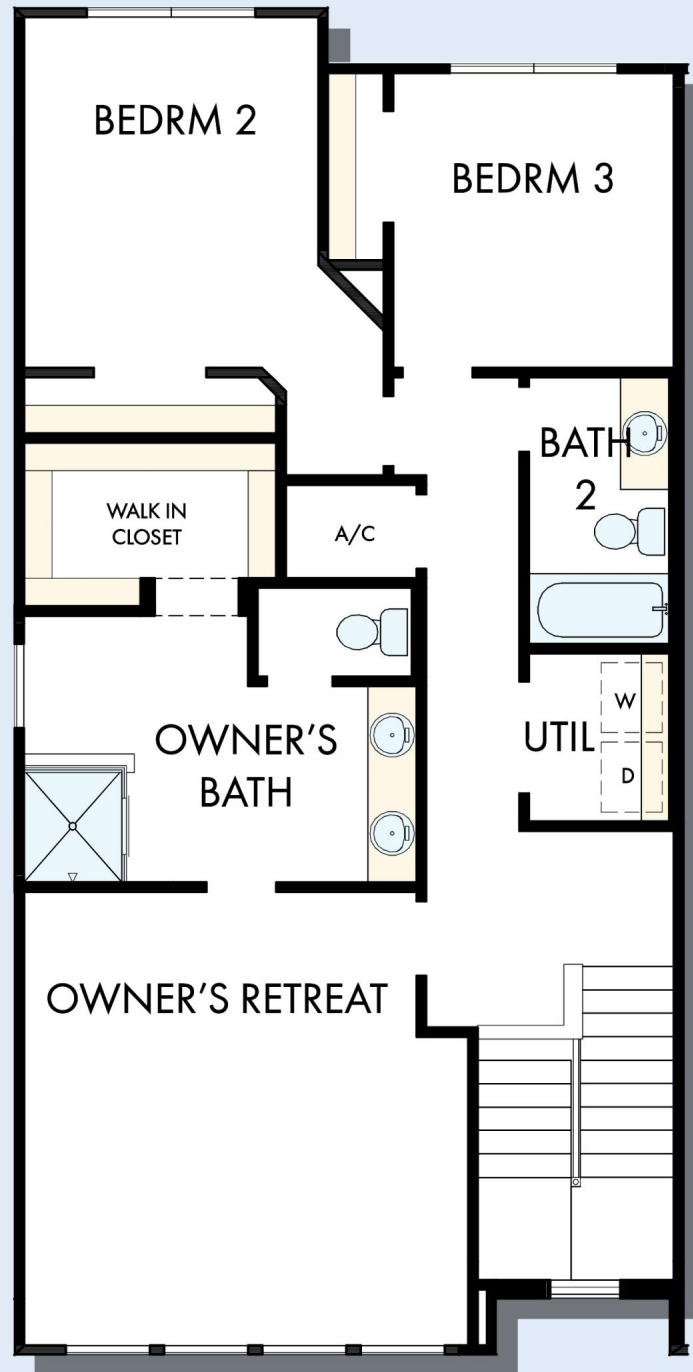
B930 in TAM

For additional options, please visit DavidWeekleyHomes.com

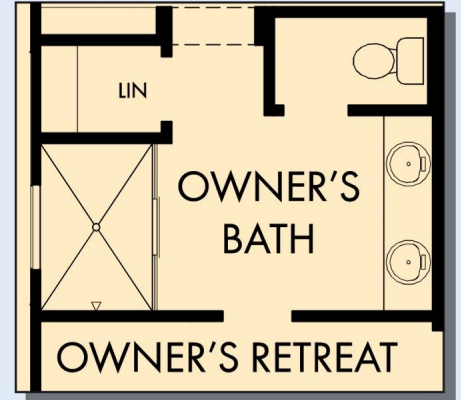
2/6/2023

DavidWeekleyHomes.com

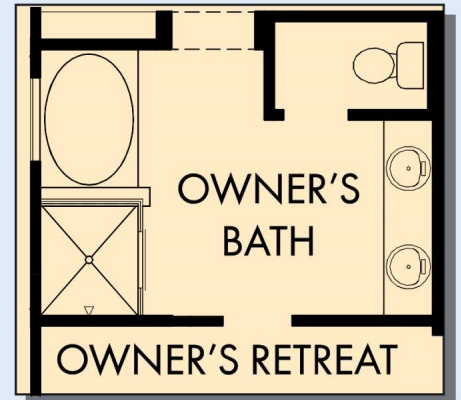
THE WATERBORNE



SECOND FLOOR



OPTIONAL SUPER SHOWER AT OWNER'S BATH



OPTIONAL SLIDE-IN TUB WITH SEPARATE SHOWER AT OWNER'S BATH

For additional options, please visit DavidWeekleyHomes.com

DavidWeekleyHomes.com



See a David Weekley Homes Sales Consultant for details. Prices, plans, dimensions, features, specifications, materials, and availability of homes or communities are subject to change without notice or obligation. Illustrations are artist's depictions only and may differ from completed improvements. Copyright © 2023 David Weekley Homes - All Rights Reserved. Tampa, FL