

THE PUTMAN



Exterior A

3,096 - 4,556 sq. ft.

4 - 6 Bedrooms

2 - 4 Full Baths

1 Half Bath

3 - 4 Car Garage



Exterior B

Shane



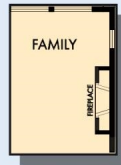
We're living our fairytale thanks to David Weekley

We can't say enough about the level of quality and care we received while building our home. Our builder was with us every step of the way to make sure our every need and desire was being met! The team truly went above and beyond at every turn to give us the home of our dreams! We will definitely recommend David Weekley to anyone looking to build a new home!

**David Weekley
Homes**

THE PUTMAN

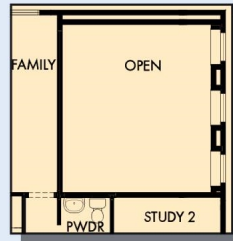
3,096 - 4,556 sq. ft. • 4 - 6 Bedrooms • 2 - 4 Full Baths • 1 Half Bath • 3 - 4 Car Garage



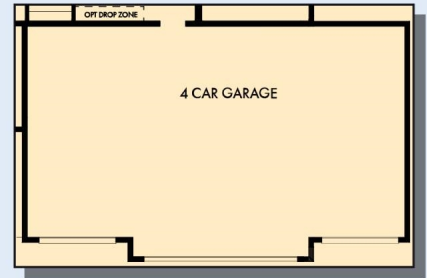
OPTIONAL
WALL FIREPLACE
AT FAMILY



OPTIONAL BEDROOM 5
WITH BATH3 AT STUDY 2



FIRST FLOOR WITH
OPTIONAL ATHLETIC COURT



OPTIONAL 4 CAR GARAGE



FIRST FLOOR

THE PUTMAN



OPTIONAL FREE STANDING
TUB WITH SEPARATE SHOWER
AT OWNER'S BATH



OPTIONAL SUPER SHOWER
AT OWNER'S BATH



OPTIONAL BEDROOM 4
AT RETREAT

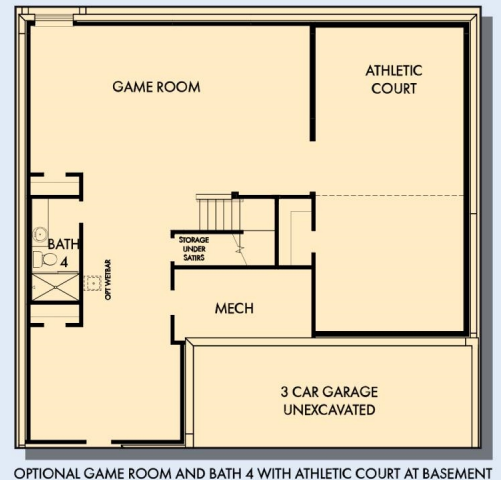
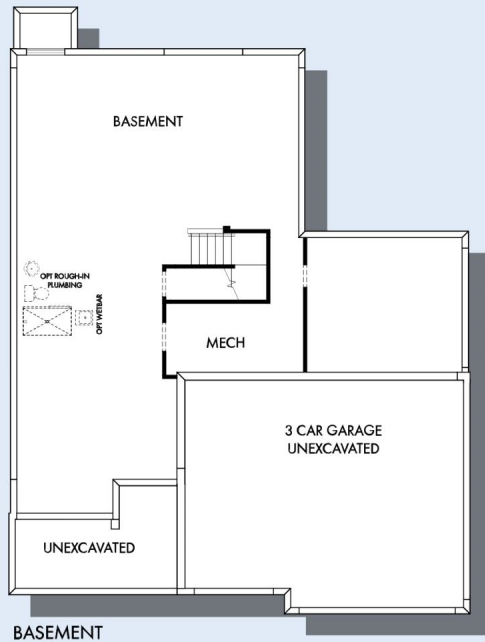
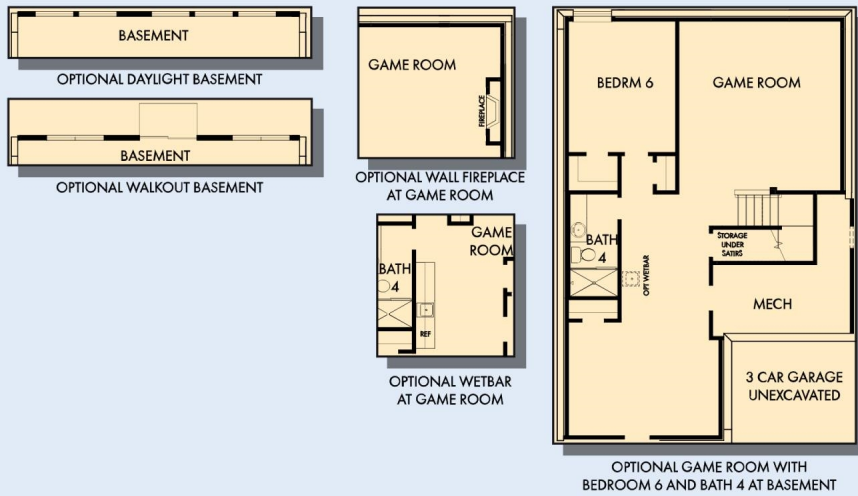


SECOND FLOOR

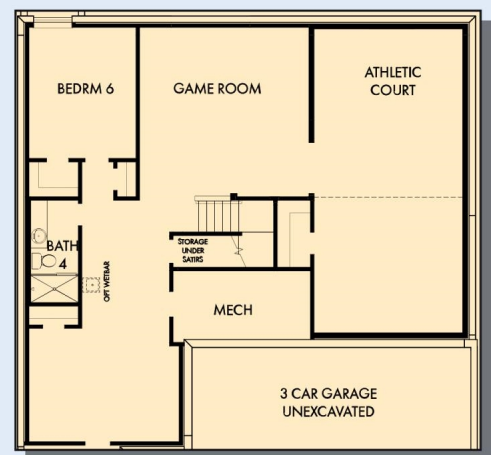
For additional options, please visit DavidWeekleyHomes.com

DavidWeekleyHomes.com

THE PUTMAN



OPTIONAL GAME ROOM AND BATH 4 WITH ATHLETIC COURT AT BASEMENT



OPTIONAL GAME ROOM, BEDROOM 6 AND BATH 4 WITH ATHLETIC COURT AT BASEMENT

For additional options, please visit DavidWeekleyHomes.com

DavidWeekleyHomes.com

See a David Weekley Homes Sales Consultant for details. Prices, plans, dimensions, features, specifications, materials, and availability of homes or communities are subject to change without notice or obligation. Illustrations are artist's depictions only and may differ from completed improvements. Copyright © 2025 David Weekley Homes - All Rights Reserved. Minneapolis/St. Paul, MN

