

# THE SWEETEA



Exterior A

2,524 sq. ft.

4 Bedrooms

2 Full Baths

1 Half Bath

2 Car Garage



Exterior B

## Perez Family



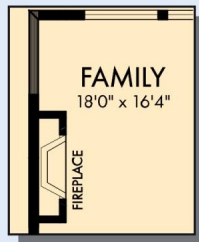
### Best Homebuying Experience Ever

We have had several homes built in the past by several homebuilders. Our experience with David Weekley was the best we have ever had. The attention to detail and the customer service were exceptional. Both our sales person and Project Manager kept us well informed and treated us like family. Thanks David Weekley

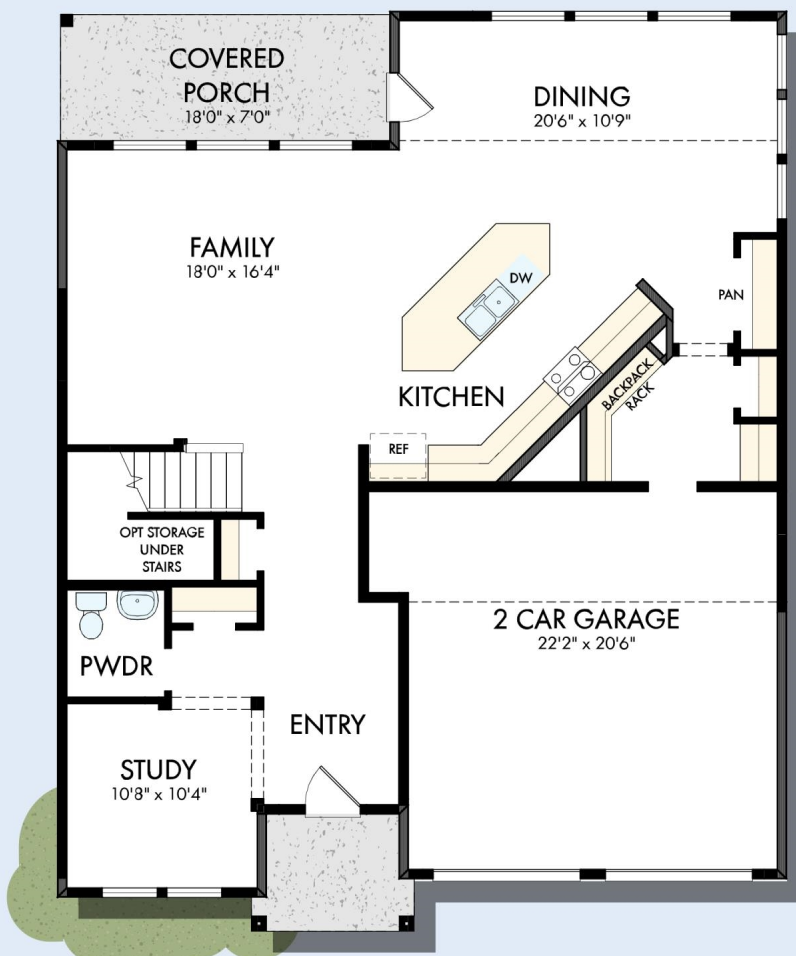
David Weekley  
Homes

# THE SWEETEA

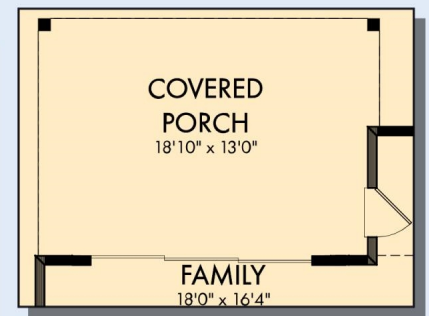
2,524 sq. ft. • 4 Bedrooms • 2 Full Baths • 1 Half Bath • 2 Car Garage



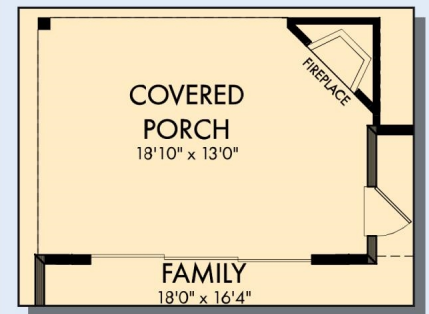
OPTIONAL WALL  
FRIEPLACE AT FAMILY



FIRST FLOOR

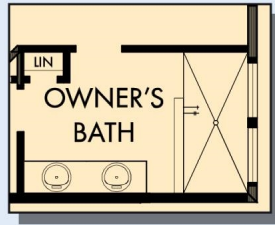


OPTIONAL EXTENDED COVERED  
PORCH WITH SLIDING GLASS DOOR  
AT FAMILY

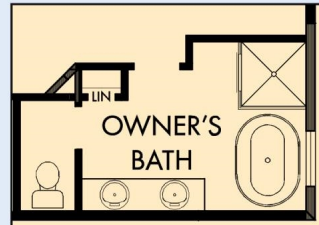


OPTIONAL OUTDOOR FIREPLACE  
WITH EXTENDED COVERED PORCH

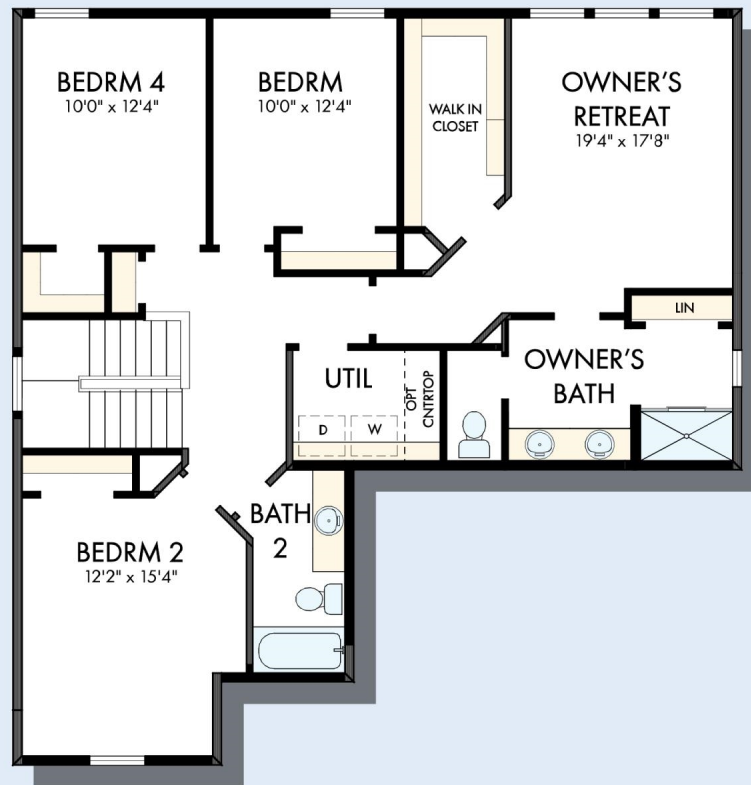
# THE SWEETEA



OPTIONAL SUPER SHOWER  
AT OWNER'S BATH



OPTIONAL FREE-STANDING  
TUB WITH SEPARATE SHOWER  
AT OWNER'S BATH



SECOND FLOOR

For additional options, please visit [DavidWeekleyHomes.com](http://DavidWeekleyHomes.com)

See a David Weekley Homes Sales Consultant for details. Prices, plans, dimensions, features, specifications, materials, and availability of homes or communities are subject to change without notice or obligation. Illustrations are artist's depictions only and may differ from completed improvements. Copyright © 2026 David Weekley Homes - All Rights Reserved. Charleston, SC

**DavidWeekleyHomes.com**

