

THE BRUGMAN



Exterior A

2,789 - 2,810 sq. ft.

4 - 5 Bedrooms

3 - 4 Full Baths

1 Half Bath

2 Car Garage



Exterior B

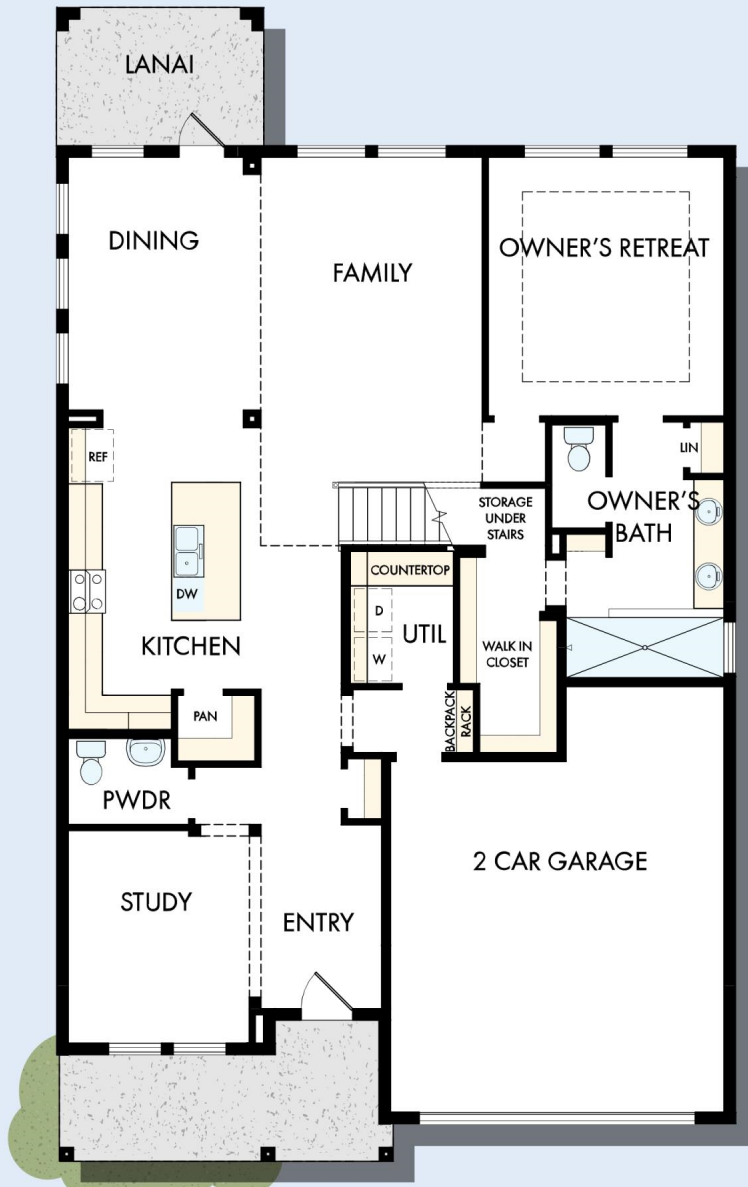


Exterior C

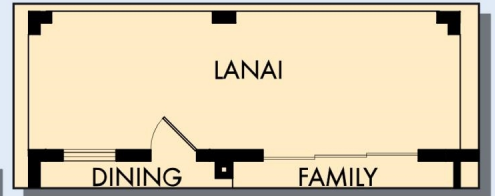
David Weekley
Homes

THE BRUGMAN

2,789 - 2,810 sq. ft. • 4 - 5 Bedrooms • 3 - 4 Full Baths • 1 Half Bath • 2 Car Garage



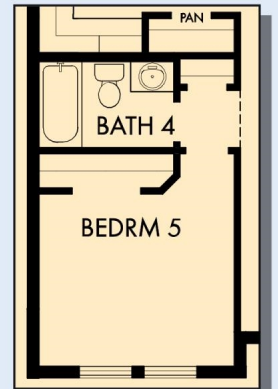
FIRST FLOOR



OPTIONAL EXTENDED LANAI WITH SLIDING GLASS DOOR

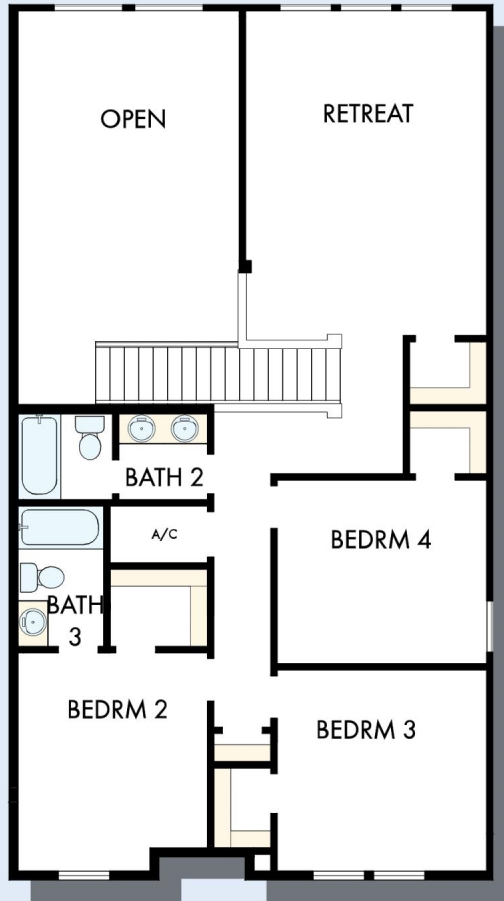


OPTIONAL FREE STANDING TUB WITH SEPARATE SHOWER AT OWNER'S BATH



OPTIONAL BEDROOM 5 WITH BATH 4 AT STUDY

THE BRUGMAN



SECOND FLOOR

For additional options, please visit DavidWeekleyHomes.com

See a David Weekley Homes Sales Consultant for details.
Prices, plans, dimensions, features, specifications, materials,
and availability of homes or communities are subject to
change without notice or obligation. Illustrations are artist's
depictions only and may differ from completed improvements.
Copyright © 2026 David Weekley Homes - All Rights Reserved.
Tampa, FL



DavidWeekleyHomes.com

