

# THE BROOMFIELD



Exterior A

3,495 - 3,497 sq. ft.

4 Bedrooms

3 Full Baths

1 Half Bath

4 Car Garage



Exterior C

**Rich C.**



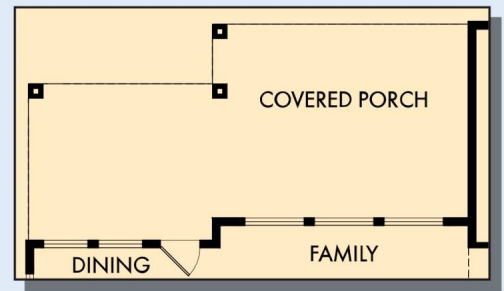
## **Wonderful Experience!**

If there is anything that sets David Weekley apart from other builders it is their customer service. I felt like a member of the family from the first time I walked into the model, to when I received my keys and saw the wonderful housewarming presents that were left for me, up to the present when I see my salesman in the neighborhood. I felt like they really took the time to understand what I was looking for and then came through with my dream home. I would highly recommend David Weekley to anyone looking to buy and/or build a home.

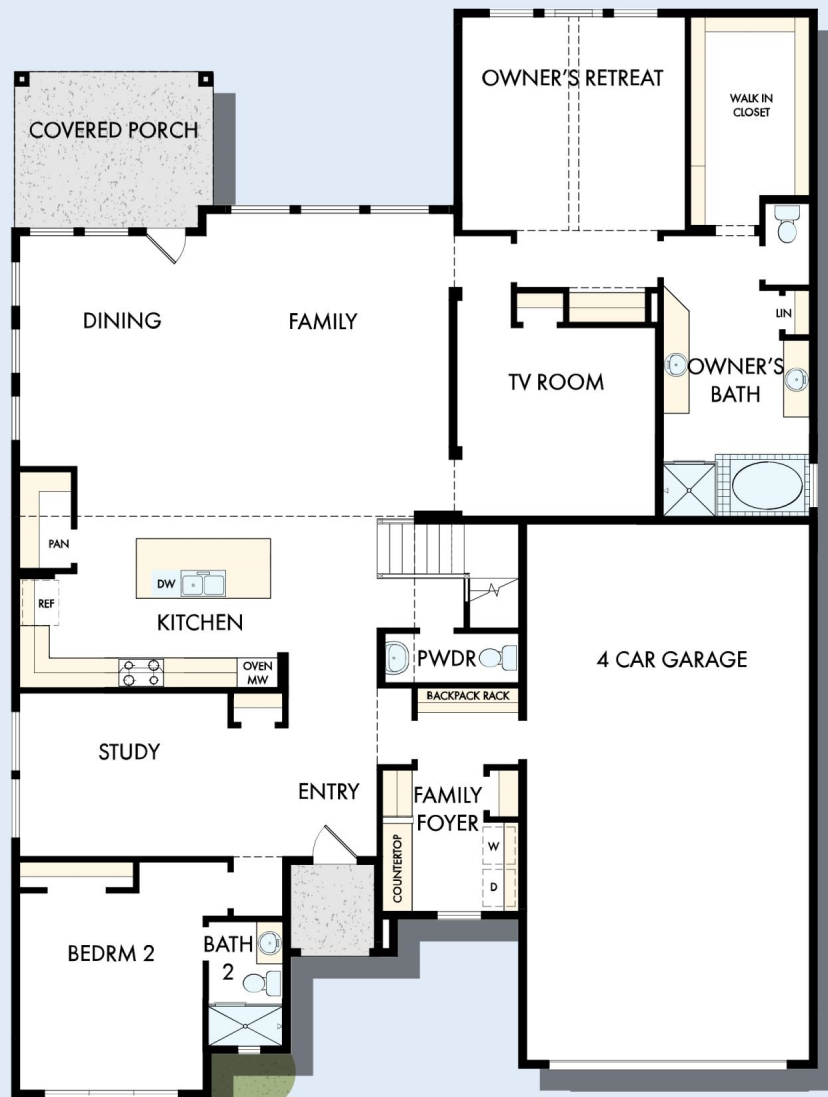
**David Weekley  
Homes**

# THE BROOMFIELD

3,495 - 3,497 sq. ft. • 4 Bedrooms • 3 Full Baths • 1 Half Bath • 4 Car Garage



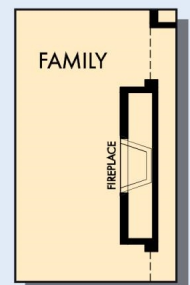
OPTIONAL EXTENDED COVERED PORCH



FIRST FLOOR



OPTIONAL SUPER SHOWER AT OWNER'S BATH



OPTIONAL WALL FIREPLACE AT FAMILY



# THE BROOMFIELD



For additional options, please visit [DavidWeekleyHomes.com](http://DavidWeekleyHomes.com)



See a David Weekley Homes Sales Consultant for details. Prices, plans, dimensions, features, specifications, materials, and availability of homes or communities are subject to change without notice or obligation. Illustrations are artist's depictions only and may differ from completed improvements. Copyright © 2025 David Weekley Homes - All Rights Reserved. Dallas/Ft. Worth, TX

**DavidWeekleyHomes.com**