

# THE NELSON



Exterior A

1,531 - 1,536 sq. ft.

3 Bedrooms

2 Full Baths

1 Half Bath

2 Car Garage



Exterior B

**Gigi and Papa**



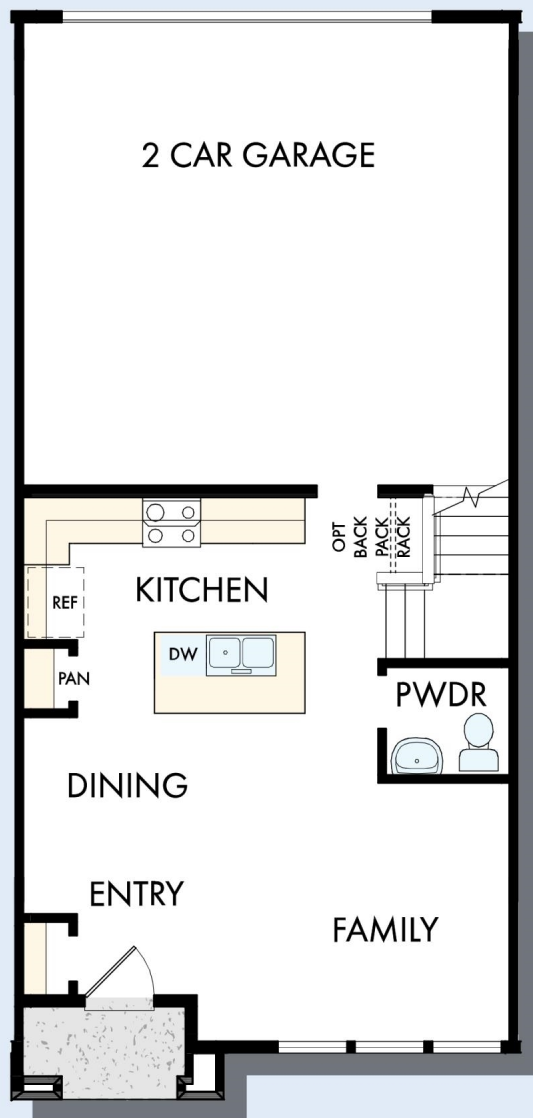
## **THE BESTest - Better than all the rest!**

What an awesome and personal family-oriented company! From touring model homes to selecting "THE ONE" just for us, the experience was delightful and amazing! The entire David Weekley team has been exceptionally wonderful and always available to address any issues we encountered. We have been amazed and impressed by the "Service after the Sale" approach by the David Weekley staff. We would recommend David Weekley homes to anyone. We feel like we are an important member of the Weekley family!

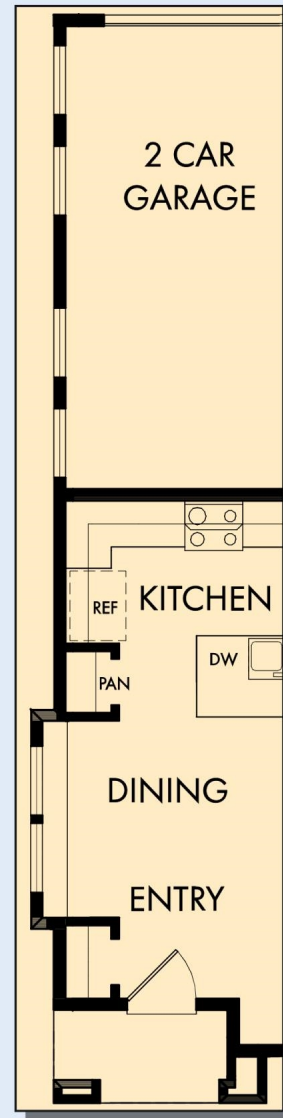
**David Weekley  
Homes**

# THE NELSON

1,531 - 1,536 sq. ft. • 3 Bedrooms • 2 Full Baths • 1 Half Bath • 2 Car Garage



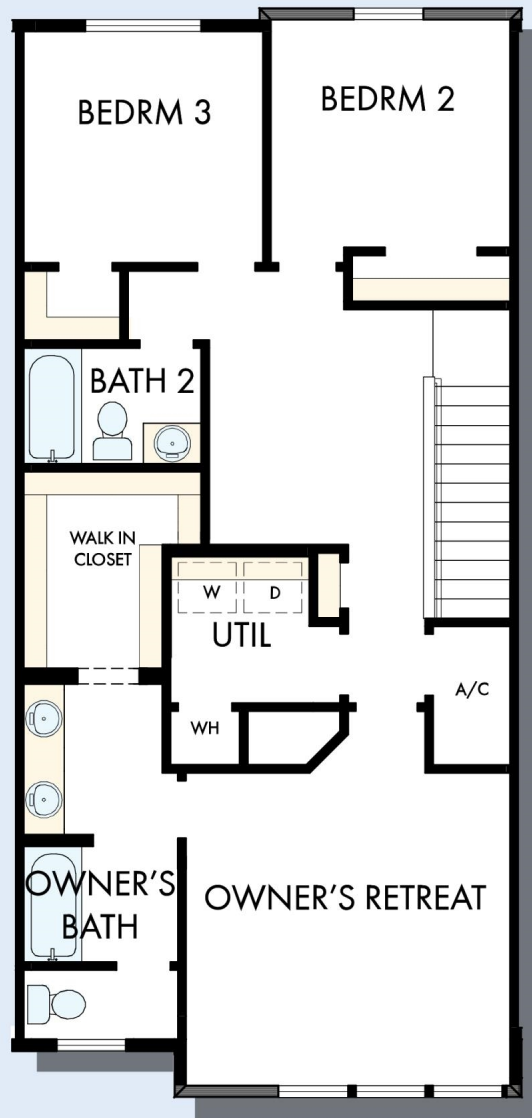
FIRST FLOOR



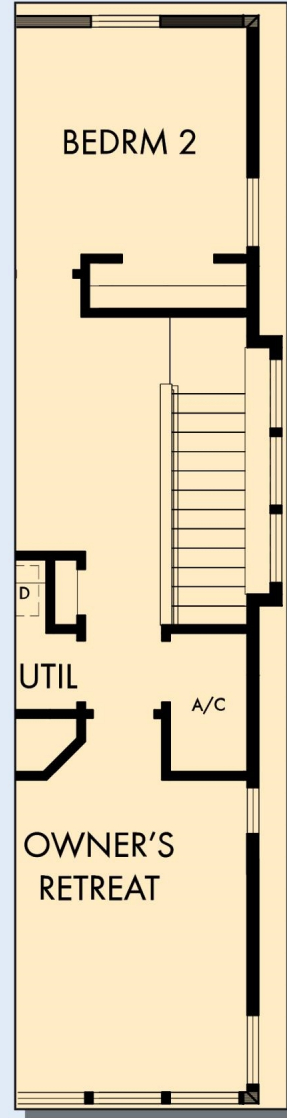
FIRST FLOOR  
WITH OPTIONAL  
LEFT SIDE VISIBILITY



# THE NELSON



SECOND FLOOR



SECOND FLOOR  
WITH OPTIONAL  
RIGHT SIDE  
VISIBILITY

For additional options, please visit [DavidWeekleyHomes.com](http://DavidWeekleyHomes.com)



See a David Weekley Homes Sales Consultant for details.  
Prices, plans, dimensions, features, specifications, materials,  
and availability of homes or communities are subject to  
change without notice or obligation. Illustrations are artist's  
depictions only and may differ from completed improvements.  
Copyright © 2025 David Weekley Homes - All Rights Reserved.  
Salt Lake City, UT

**DavidWeekleyHomes.com**