

THE ELIAS



Exterior A

1,882 - 2,519 sq. ft.

4 - 5 Bedrooms

2 - 3 Full Baths

1 Half Bath

2 - 3 Car Garage



Exterior B

Meg S.



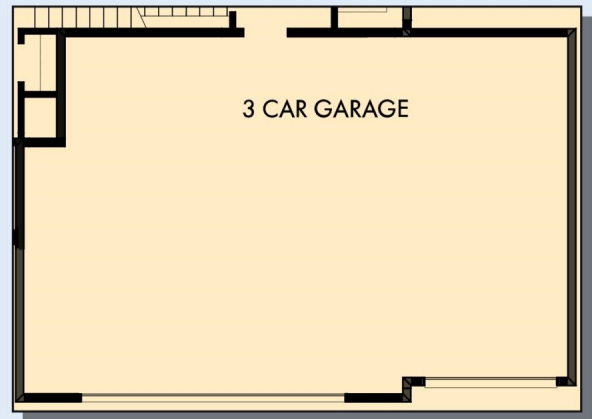
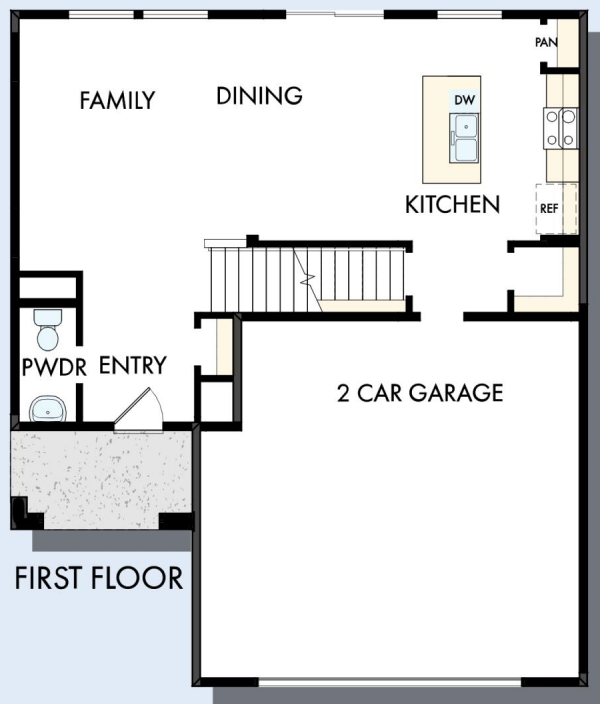
Truly treated us like family!!!

We enjoyed every part of the home building process. It was amazing! Our builder was always keeping us informed and really went above and beyond to ensure that we love our home. Our warranty rep is outstanding and continues to take care of our every need. I couldn't have asked for a better experience. Our builder and warranty rep continue to be there for us as a family. While our interactions with the DW Family have been highly professional, we are also lucky enough to be able to call them some of our greatest friends! Wouldn't change a thing!

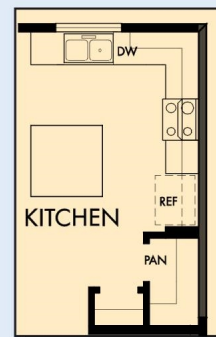
**David Weekley
Homes**

THE ELIAS

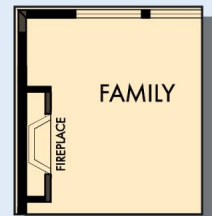
1,882 - 2,519 sq. ft. • 4 - 5 Bedrooms • 2 - 3 Full Baths • 1 Half Bath • 2 - 3 Car Garage



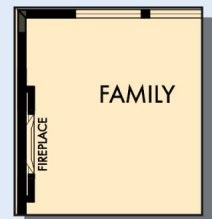
OPTIONAL 3 CAR GARAGE



OPTIONAL SUPER KITCHEN



OPTIONAL WALL FIREPLACE AT FAMILY



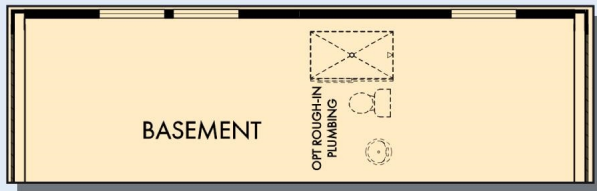
OPTIONAL ELECTRIC WALL FIREPLACE AT FAMILY

THE ELIAS

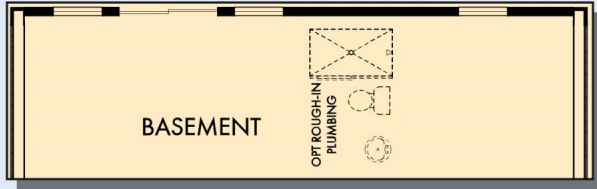


For additional options, please visit DavidWeekleyHomes.com

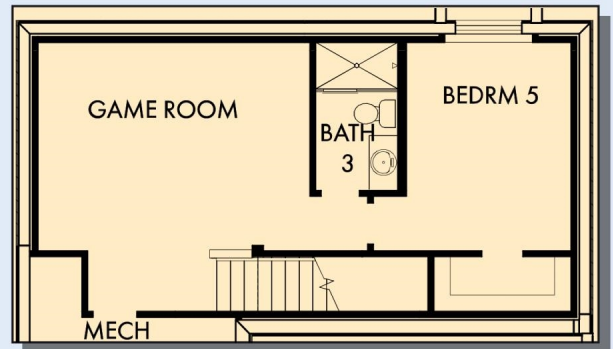
THE ELIAS



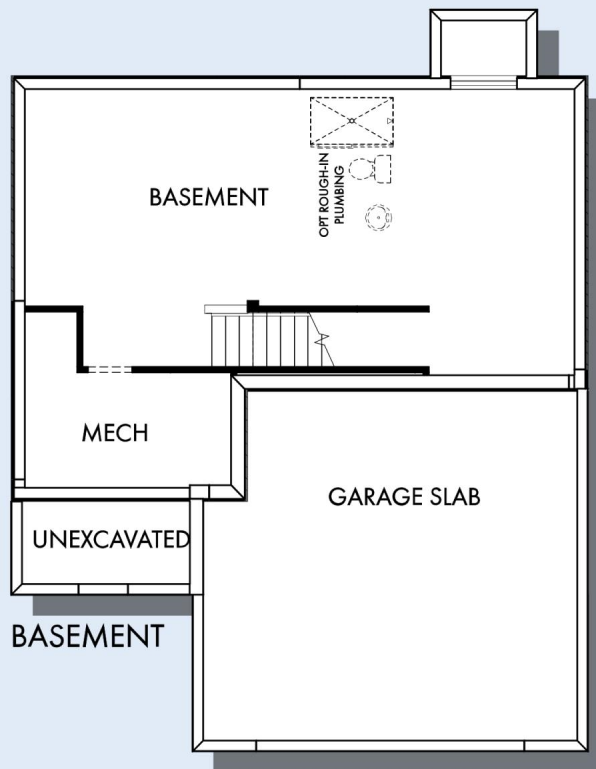
OPTIONAL DAYLIGHT BASEMENT



OPTIONAL WALKOUT BASEMENT



OPTIONAL GAME ROOM WITH BEDROOM 5
AND BATH 3 AT BASEMENT



For additional options, please visit DavidWeekleyHomes.com



See a David Weekley Homes Sales Consultant for details. Prices, plans, dimensions, features, specifications, materials, and availability of homes or communities are subject to change without notice or obligation. Illustrations are artist's depictions only and may differ from completed improvements. Copyright © 2025 David Weekley Homes - All Rights Reserved. Minneapolis/St. Paul, MN

DavidWeekleyHomes.com