

THE CRESTWOOD



Exterior A



Exterior B

2,299 - 2,893 sq. ft.

3 - 5 Bedrooms

2 - 4 Full Baths

1 Half Bath

2 - 3 Car Garage

Crystal W.



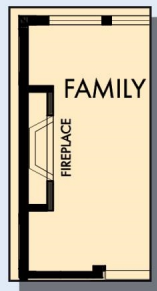
Welcome Home

My DWHomes experience has been truly 5-stars! From a floorplan concept, reserving a lot filled with dirt, the homebuilding project, to "Welcome Home", the entire process has been amazing. The team provided regular feedback and were always available to address questions and concerns. I was sold on the quality features. The entire team's availability and service has been exceptional before and after closing. Looking forward to enjoying our new home and neighbors for many years to come!

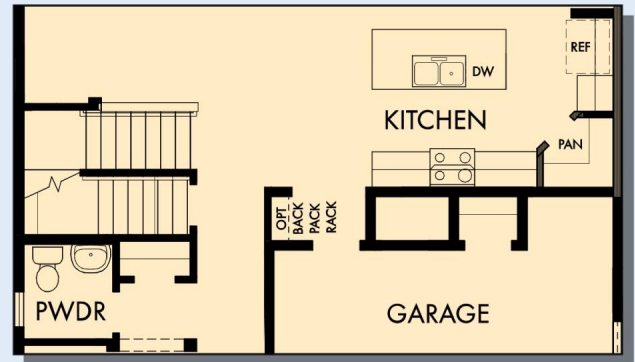
**David Weekley
Homes**

THE CRESTWOOD

2,299 - 2,893 sq. ft. • 3 - 5 Bedrooms • 2 - 4 Full Baths • 1 Half Bath • 2 - 3 Car Garage



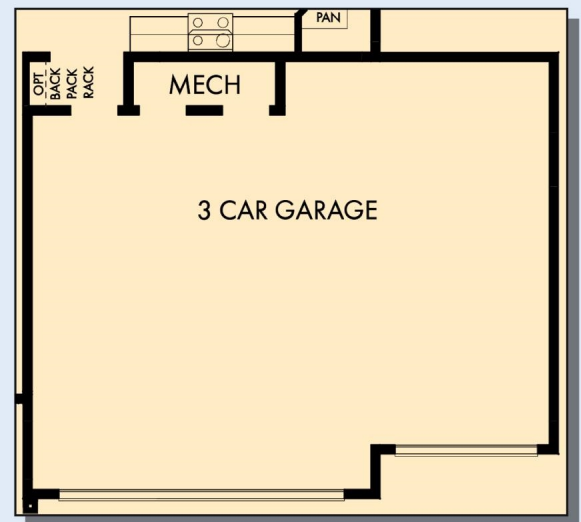
OPTIONAL
WALL FIREPLACE
AT FAMILY



FIRST FLOOR WITH OPTIONAL BASEMENT



FIRST FLOOR



OPTIONAL 3 CAR GARAGE

THE CRESTWOOD



OPTIONAL BEDROOM 4
AT RETREAT



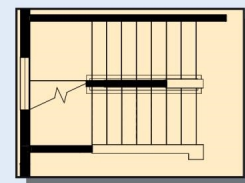
OPTIONAL BEDROOM 4
WITH BATH 3 AT RETREAT



OPTIONAL SLIDE-IN TUB
WITH SEPARATE SHOWER
AT OWNER'S BATH



OPTIONAL SUPER SHOWER
AT OWNER'S BATH



SECOND FLOOR WITH
OPTIONAL THIRD FLOOR
BONUS

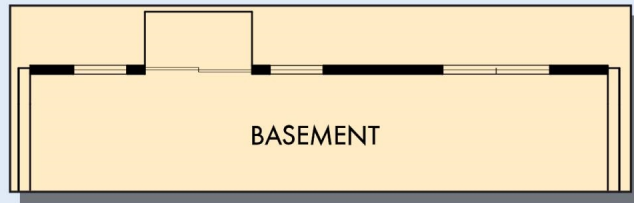


SECOND FLOOR

For additional options, please visit DavidWeekleyHomes.com

DavidWeekleyHomes.com

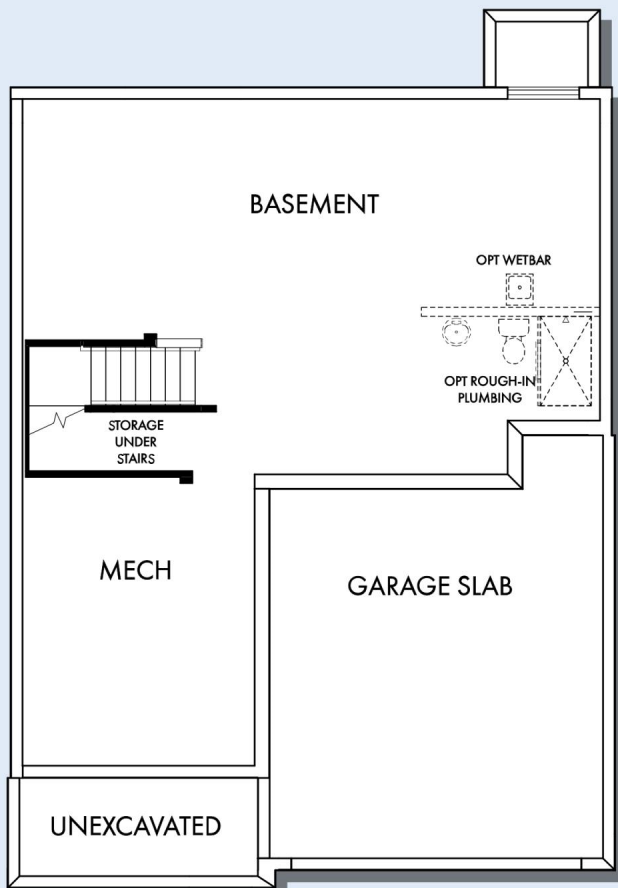
THE CRESTWOOD



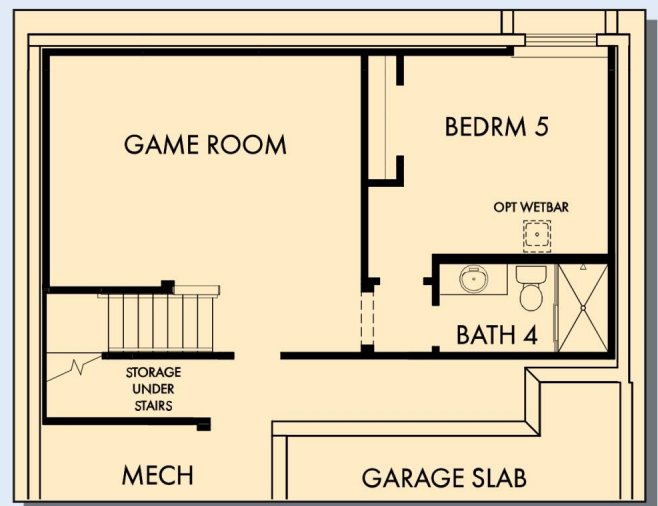
OPTIONAL WALKOUT BASEMENT



OPTIONAL DAYLIGHT BASEMENT



BASEMENT



OPTIONAL GAME ROOM WITH BEDROOM 5
AND BATH 4 AT BASEMENT

For additional options, please visit DavidWeekleyHomes.com



See a David Weekley Homes Sales Consultant for details. Prices, plans, dimensions, features, specifications, materials, and availability of homes or communities are subject to change without notice or obligation. Illustrations are artist's depictions only and may differ from completed improvements. Copyright © 2025 David Weekley Homes - All Rights Reserved. Minneapolis/St. Paul, MN

DavidWeekleyHomes.com