

THE ANTHEM



Exterior A



Exterior B

2,489 - 3,369 sq. ft.

3 - 4 Bedrooms

2 - 3 Full Baths

1 Half Bath

2 - 3 Car Garage

Gigi and Papa



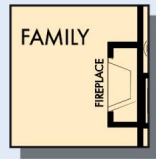
THE BESTest - Better than all the rest!

What an awesome and personal family-oriented company! From touring model homes to selecting "THE ONE" just for us, the experience was delightful and amazing! The entire David Weekley team has been exceptionally wonderful and always available to address any issues we encountered. We have been amazed and impressed by the "Service after the Sale" approach by the David Weekley staff. We would recommend David Weekley homes to anyone. We feel like we are an important member of the Weekley family!

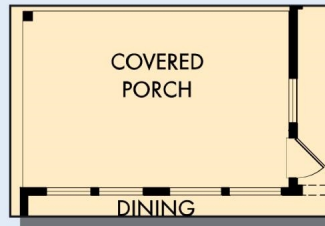
**David Weekley
Homes**

THE ANTHEM

2,489 - 3,369 sq. ft. • 3 - 4 Bedrooms • 2 - 3 Full Baths • 1 Half Bath • 2 - 3 Car Garage



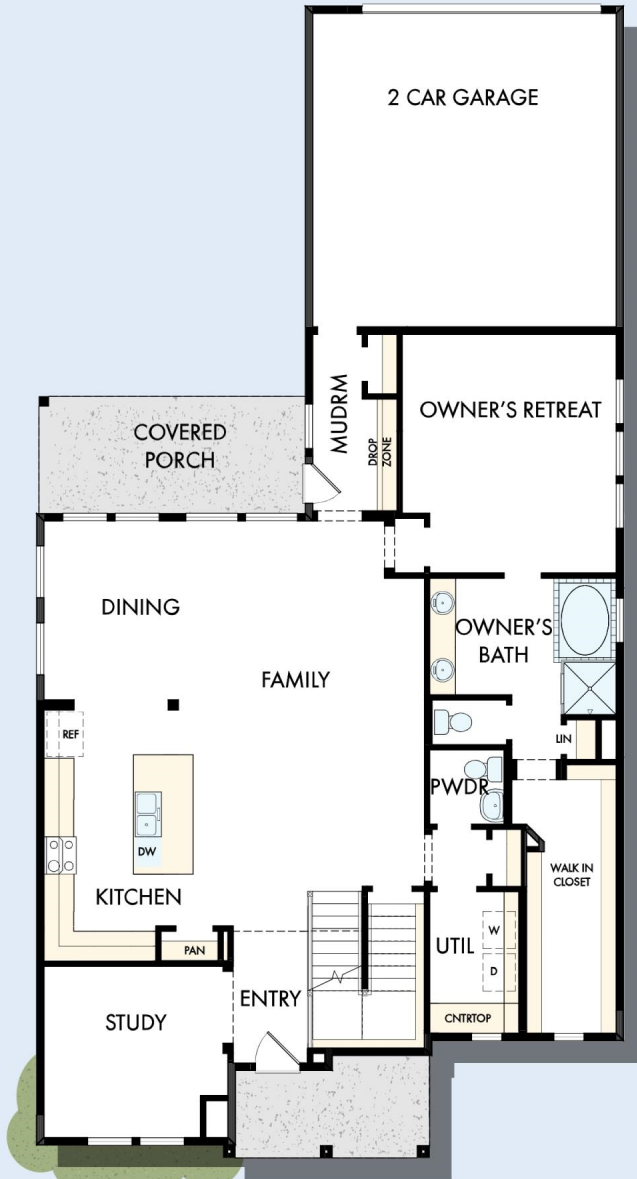
OPTIONAL WALL FIREPLACE AT FAMILY



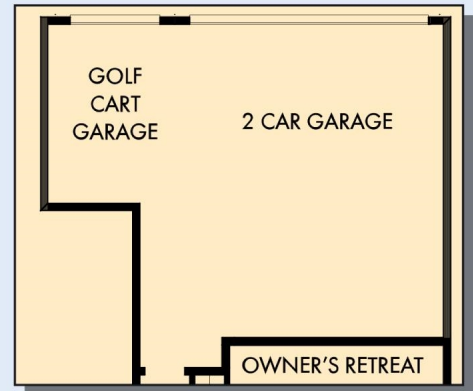
OPTIONAL EXTENDED COVERED PORCH AT DINING



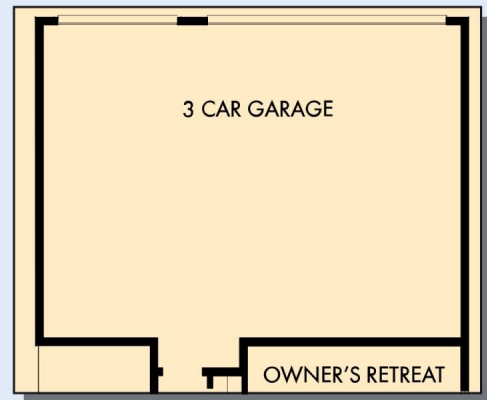
OPTIONAL SUPER SHOWER AT OWNER'S BATH



FIRST FLOOR



OPTIONAL GOLF CART GARAGE



OPTIONAL 3 CAR GARAGE

THE ANTHEM

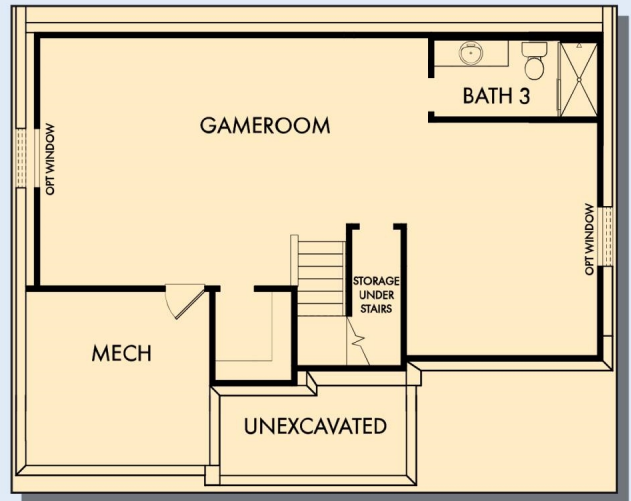
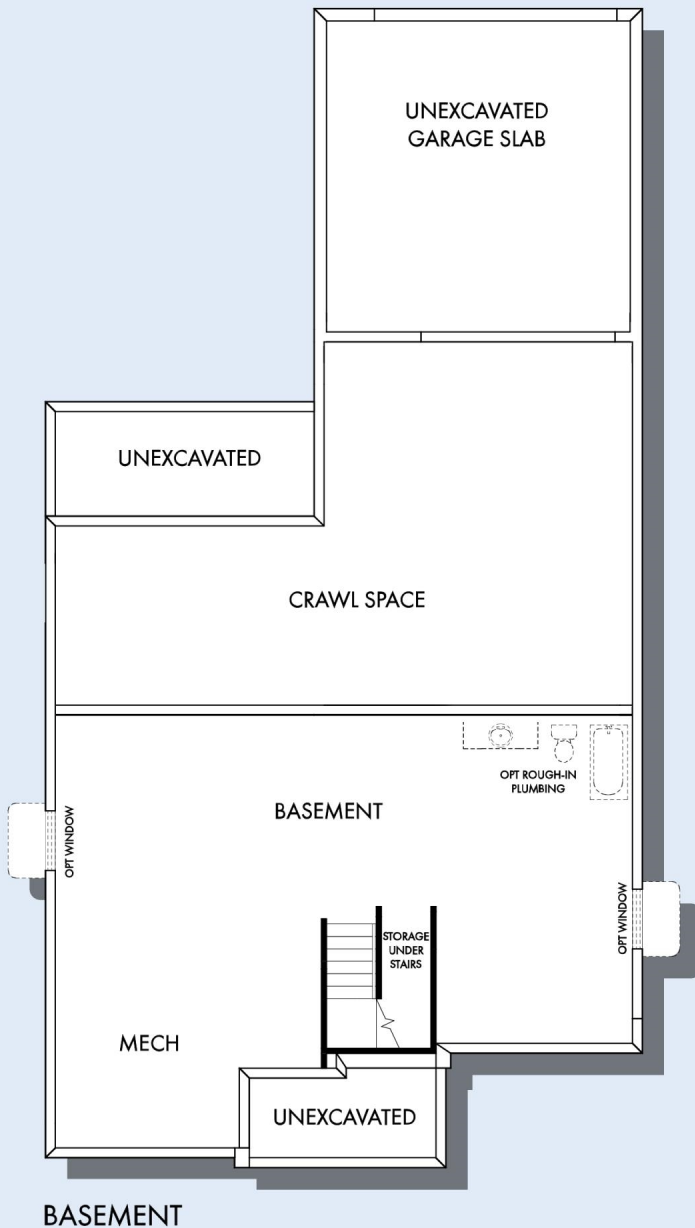


SECOND FLOOR

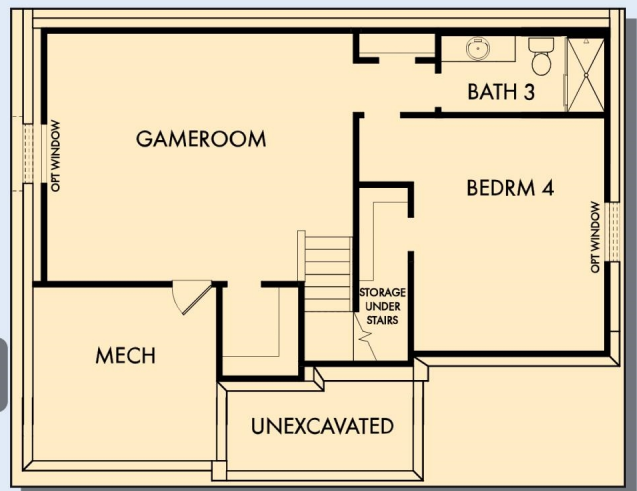
For additional options, please visit DavidWeekleyHomes.com

DavidWeekleyHomes.com

THE ANTHEM



OPTIONAL GAMEROOM WITH BATH 3 AT BASEMENT



OPTIONAL GAMEROOM WITH BEDROOM 4 AND BATH 3 AT BASEMENT

For additional options, please visit DavidWeekleyHomes.com

See a David Weekley Homes Sales Consultant for details. Prices, plans, dimensions, features, specifications, materials, and availability of homes or communities are subject to change without notice or obligation. Illustrations are artist's depictions only and may differ from completed improvements. Copyright © 2026 David Weekley Homes - All Rights Reserved. Indianapolis, IN

DavidWeekleyHomes.com

