

THE POMROY



Exterior A

1,890 - 3,117 sq. ft.

2 - 4 Bedrooms

2 - 3 Full Baths

3 Car Garage



Exterior B

Shane



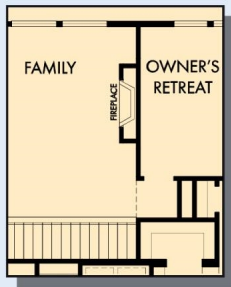
We're living our fairytale thanks to David Weekley

We can't say enough about the level of quality and care we received while building our home. Our builder was with us every step of the way to make sure our every need and desire was being met! The team truly went above and beyond at every turn to give us the home of our dreams! We will definitely recommend David Weekley to anyone looking to build a new home!

**David Weekley
Homes**

THE POMROY

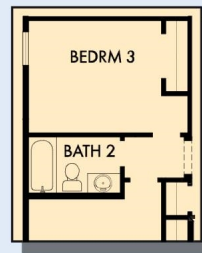
1,890 - 3,117 sq. ft. • 2 - 4 Bedrooms • 2 - 3 Full Baths • 3 Car Garage



OPTIONAL FIREPLACE
AT FAMILY ROOM



OPTIONAL SLIDE IN TUB
WITH SEPARATE SHOWER
AT OWNER'S BATH



OPTIONAL BEDROOM 3

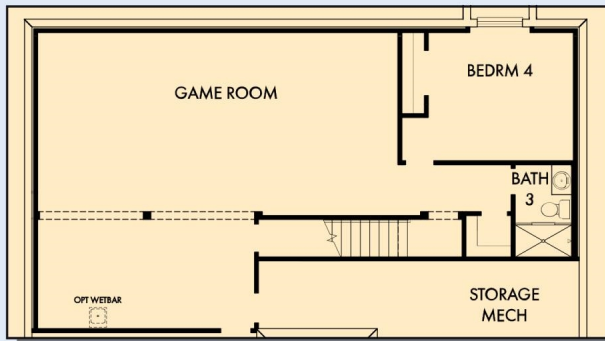


OPTIONAL SUPER SHOWER
AT OWNER'S BATH

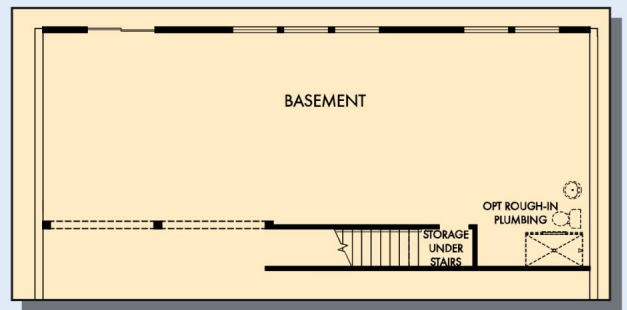


FIRST FLOOR

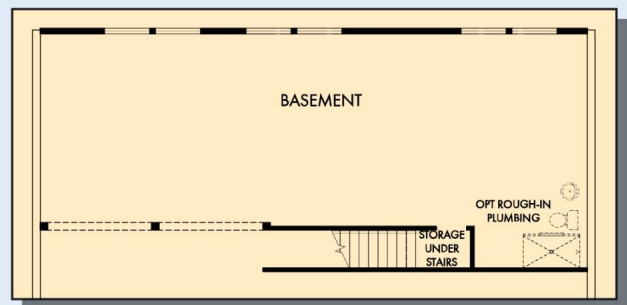
THE POMROY



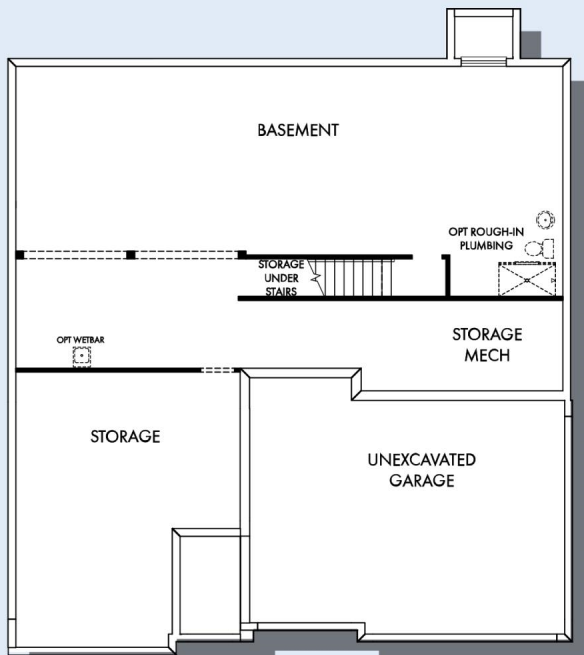
OPTIONAL FINISHED BASEMENT WITH GAME ROOM AND BEDROOM 4 AND BATH 3



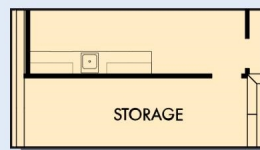
OPTIONAL WALKOUT BASEMENT



OPTIONAL DAYLIGHT BASEMENT



BASEMENT



OPTIONAL WETBAR

For additional options, please visit DavidWeekleyHomes.com

DavidWeekleyHomes.com



See a David Weekley Homes Sales Consultant for details. Prices, plans, dimensions, features, specifications, materials, and availability of homes or communities are subject to change without notice or obligation. Illustrations are artist's depictions only and may differ from completed improvements. Copyright © 2025 David Weekley Homes - All Rights Reserved. Minneapolis/St. Paul, MN