

THE THISTLE



Exterior E

2,691 - 2,693 sq. ft.

4 Bedrooms

3 Full Baths

3 Car Garage



Exterior F

Rich C.



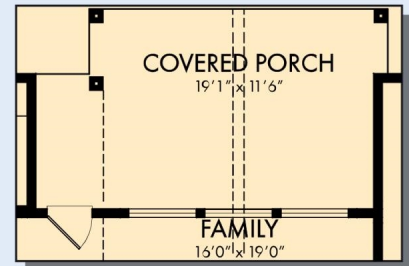
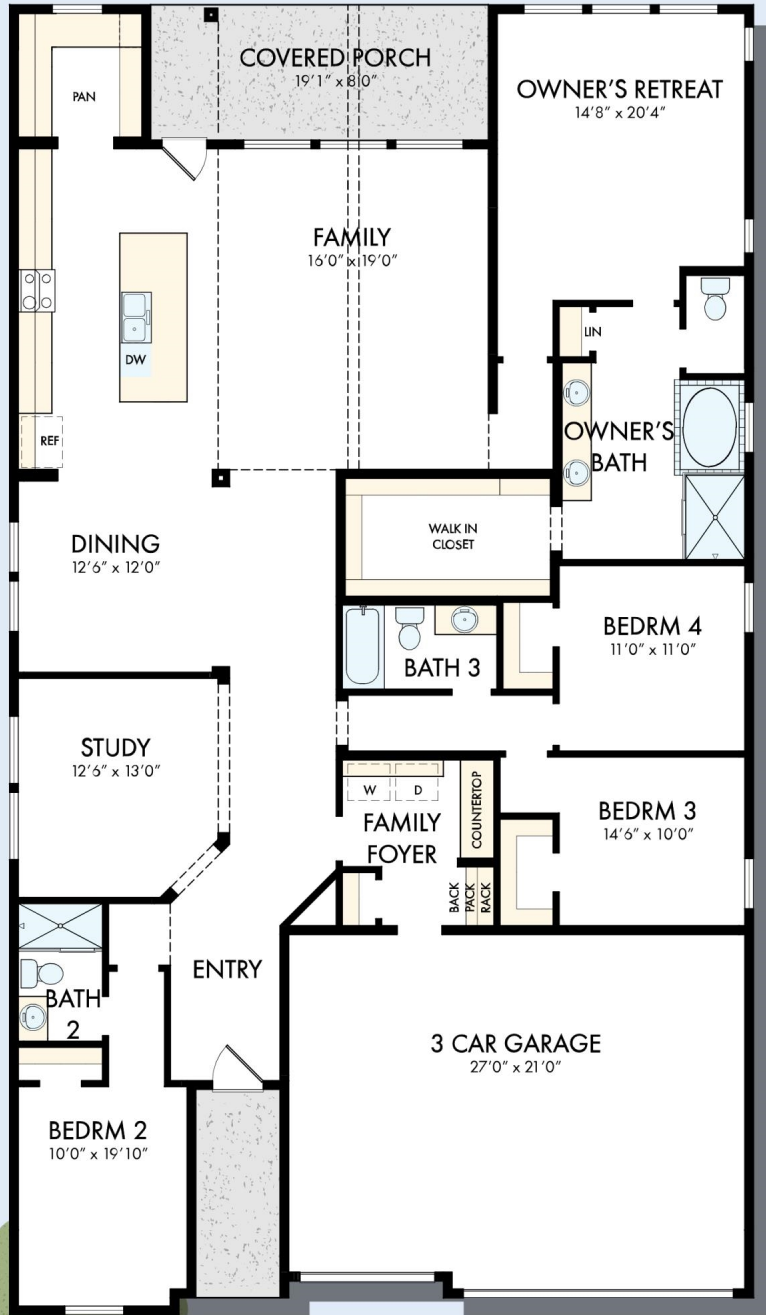
Wonderful Experience!

If there is anything that sets David Weekley apart from other builders it is their customer service. I felt like a member of the family from the first time I walked into the model, to when I received my keys and saw the wonderful housewarming presents that were left for me, up to the present when I see my salesman in the neighborhood. I felt like they really took the time to understand what I was looking for and then came through with my dream home. I would highly recommend David Weekley to anyone looking to buy and/or build a home.

David Weekley
Homes

THE THISTLE

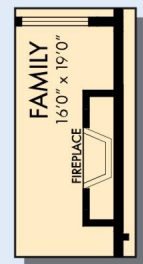
2,691 - 2,693 sq. ft. • 4 Bedrooms • 3 Full Baths • 3 Car Garage



OPTIONAL EXTENDED COVERED PORCH



OPTIONAL SUPER SHOWER AT OWNER'S BATH



OPTIONAL WALL FIREPLACE AT FAMILY

T085 in 7039 HOU

For additional options, please visit DavidWeekleyHomes.com

4/21/2026

See a David Weekley Homes Sales Consultant for details. Prices, plans, dimensions, features, specifications, materials, and availability of homes or communities are subject to change without notice or obligation. Illustrations are artist's depictions only and may differ from completed improvements. Copyright © 2026 David Weekley Homes - All Rights Reserved. Houston, TX

DavidWeekleyHomes.com

