

THE JOSHUA

sq. ft.

Bedrooms

Full Baths

Half Baths

Car Garage

**David Weekley
Homes**

Gigi and Papa



THE BESTest - Better than all the rest!

What an awesome and personal family-oriented company! From touring model homes to selecting "THE ONE" just for us, the experience was delightful and amazing! The entire David Weekley team has been exceptionally wonderful and always available to address any issues we encountered. We have been amazed and impressed by the "Service after the Sale" approach by the David Weekley staff. We would recommend David Weekley homes to anyone. We feel like we are an important member of the Weekley family!

Crystal W.

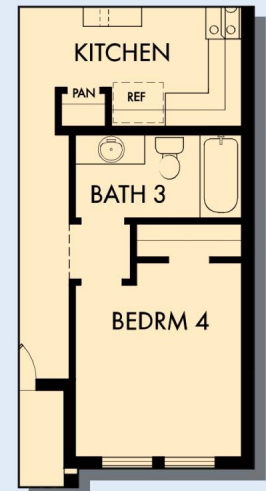
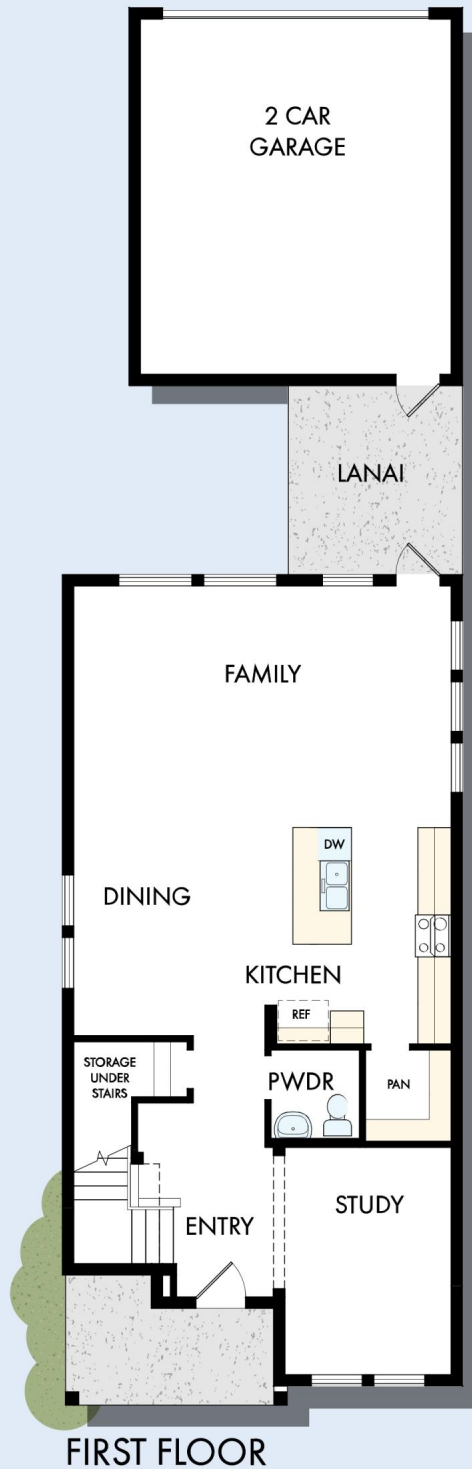


Welcome Home

My DWHomes experience has been truly 5-stars! From a floorplan concept, reserving a lot filled with dirt, the homebuilding project, to "Welcome Home", the entire process has been amazing. The team provided regular feedback and were always available to address questions and concerns. I was sold on the quality features. The entire team's availability and service has been exceptional before and after closing. Looking forward to enjoying our new home and neighbors for many years to come!

THE JOSHUA

sq. ft. • Bedrooms • Full Baths • Half Baths • Car Garage



OPTIONAL BEDROOM 4
WITH BATH 3 AT STUDY

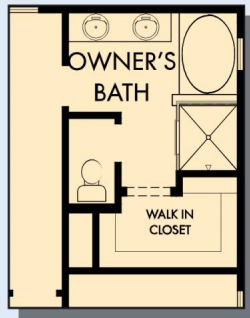
F151 in ORL

For additional options, please visit DavidWeekleyHomes.com

9/22/2025

DavidWeekleyHomes.com

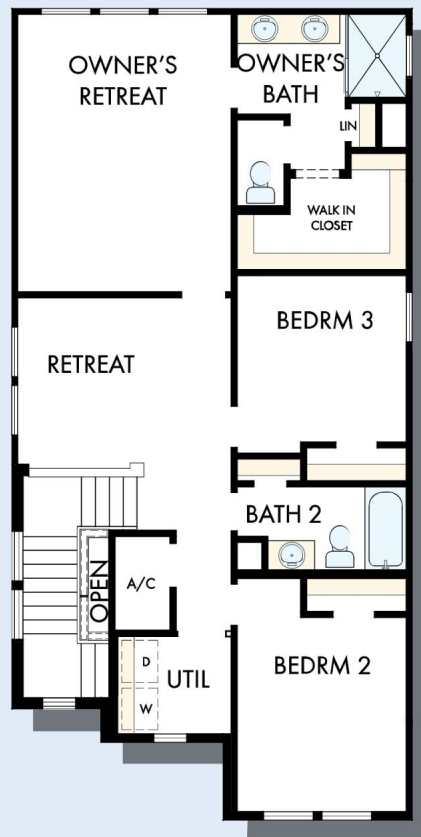
THE JOSHUA



OPTIONAL SLIDE-IN TUB
WITH SHOWER AT
OWNER'S BATH



OPTIONAL SUPER SHOWER
AT OWNER'S BATH



SECOND FLOOR

For additional options, please visit DavidWeekleyHomes.com



See a David Weekley Homes Sales Consultant for details.
Prices, plans, dimensions, features, specifications, materials,
and availability of homes or communities are subject to
change without notice or obligation. Illustrations are artist's
depictions only and may differ from completed improvements.
Copyright © 2025 David Weekley Homes - All Rights Reserved.
Orlando, FL

DavidWeekleyHomes.com