

# THE CONEFLOWER



Exterior A

2,031 - 2,056 sq. ft.

3 - 4 Bedrooms

2 Full Baths

1 Half Bath

2 Car Garage



Exterior B

**Greg and Jane**



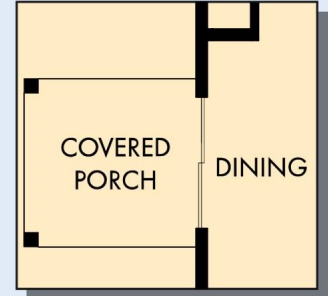
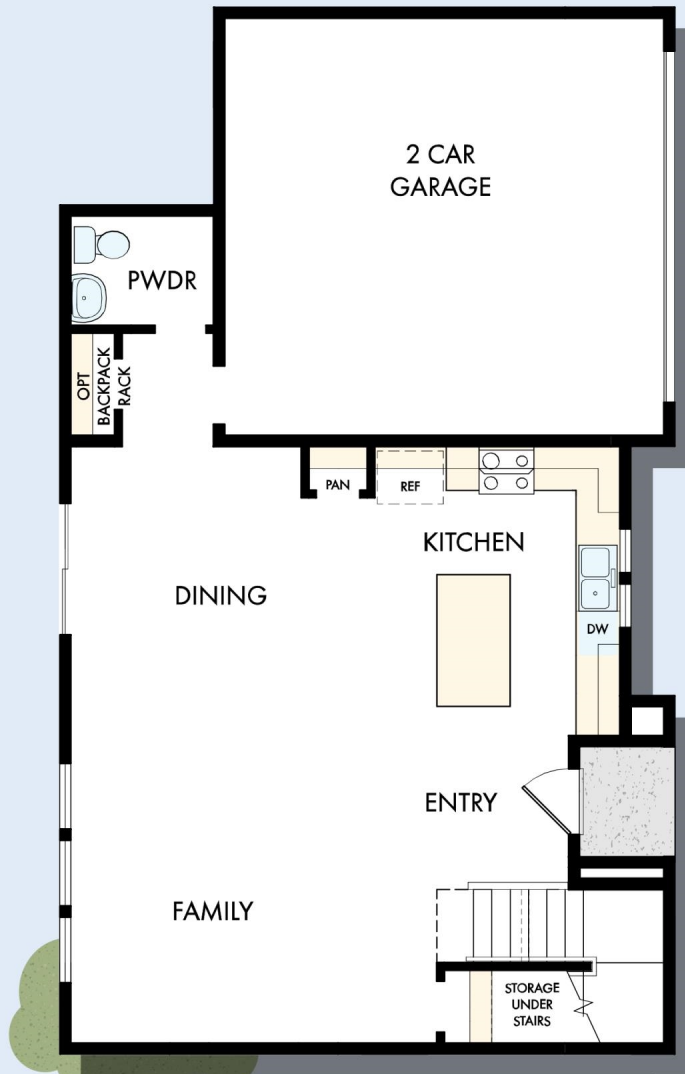
### **Exceptional service and experience!**

We have been fortunate enough to build several new homes and this was by far the best experience that we've encountered. We actually debated whether or not we wanted to go through the home building process again or simply purchase a pre-owned home or a finished new home. So pleased we built! Our Weekley team (sales associate, design consultant and builder) was very professional, courteous, attentive, responsive and pro-active from beginning to end. They've all become our adopted kids! Great overall experience!

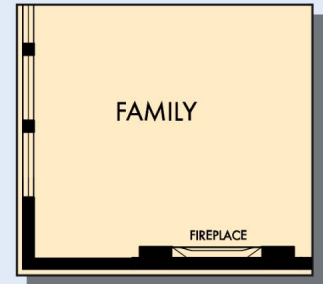
**David Weekley  
Homes**

# THE CONEFLOWER

2,031 - 2,056 sq. ft. • 3 - 4 Bedrooms • 2 Full Baths • 1 Half Bath • 2 Car Garage



OPTIONAL COVERED PORCH AT DINING



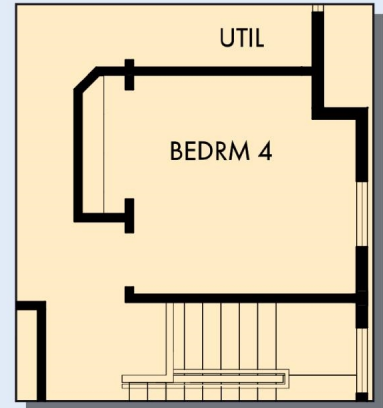
OPTIONAL ELECTRIC WALL FIREPLACE AT FAMILY

FIRST FLOOR

# THE CONEFLOWER



SECOND FLOOR



OPTIONAL BEDROOM 4  
AT RETREAT

For additional options, please visit [DavidWeekleyHomes.com](http://DavidWeekleyHomes.com)

See a David Weekley Homes Sales Consultant for details.  
Prices, plans, dimensions, features, specifications, materials,  
and availability of homes or communities are subject to  
change without notice or obligation. Illustrations are artist's  
depictions only and may differ from completed improvements.  
Copyright © 2026 David Weekley Homes - All Rights Reserved.  
POR, OR

**DavidWeekleyHomes.com**

