

THE ANTHEM



Exterior A



Exterior B

2,489 - 3,369 sq. ft.

3 - 4 Bedrooms

2 - 3 Full Baths

1 Half Bath

2 - 3 Car Garage

Lauren L.



Home is where the heart is.

Years we waited to buy a house. Painful years of raising children in someone else's home. Years I got to ponder what it would be like to have something of my own. I envisioned my children sitting in their home, playing in their rooms, running through their yard...and the days of waiting were over, all of my research paid off. We bought the house of my dreams and were given the best sales associate and builder, down to my warranty specialist. Everything was easy and seamless. I felt like we were working together, like a team. Now, I have a beautiful house that I know was built with integrity. I could not be more grateful.

**David Weekley
Homes**

THE ANTHEM

2,489 - 3,369 sq. ft. • 3 - 4 Bedrooms • 2 - 3 Full Baths • 1 Half Bath • 2 - 3 Car Garage



OPTIONAL WALL FIREPLACE AT FAMILY



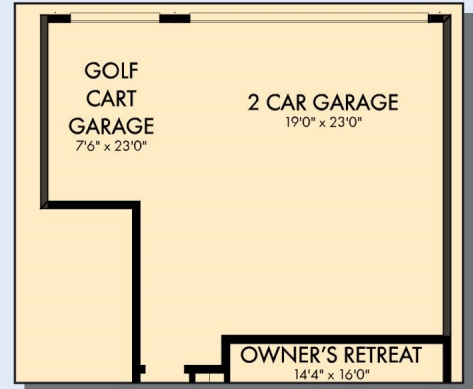
OPTIONAL EXTENDED COVERED PORCH AT DINING



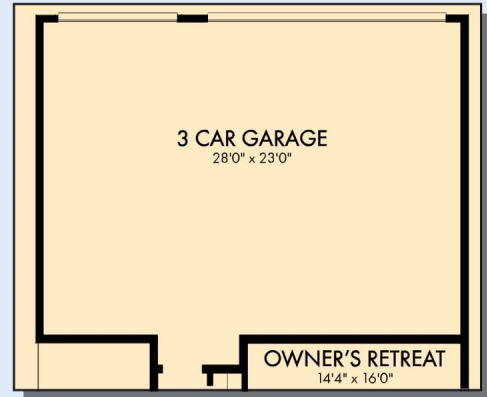
OPTIONAL SUPER SHOWER AT OWNER'S BATH



FIRST FLOOR



OPTIONAL GOLF CART GARAGE



OPTIONAL 3 CAR GARAGE

THE ANTHEM



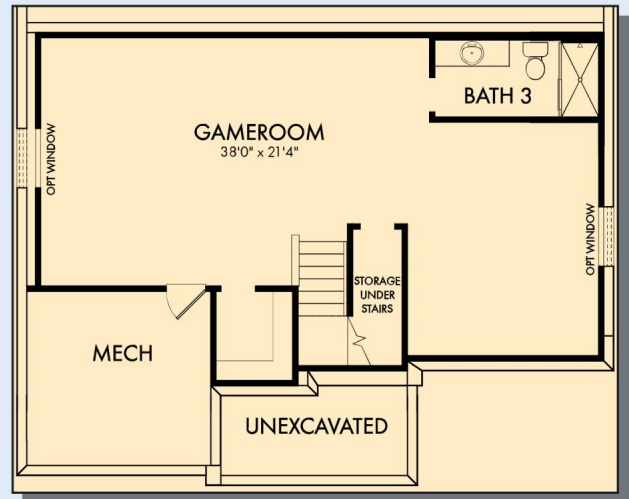
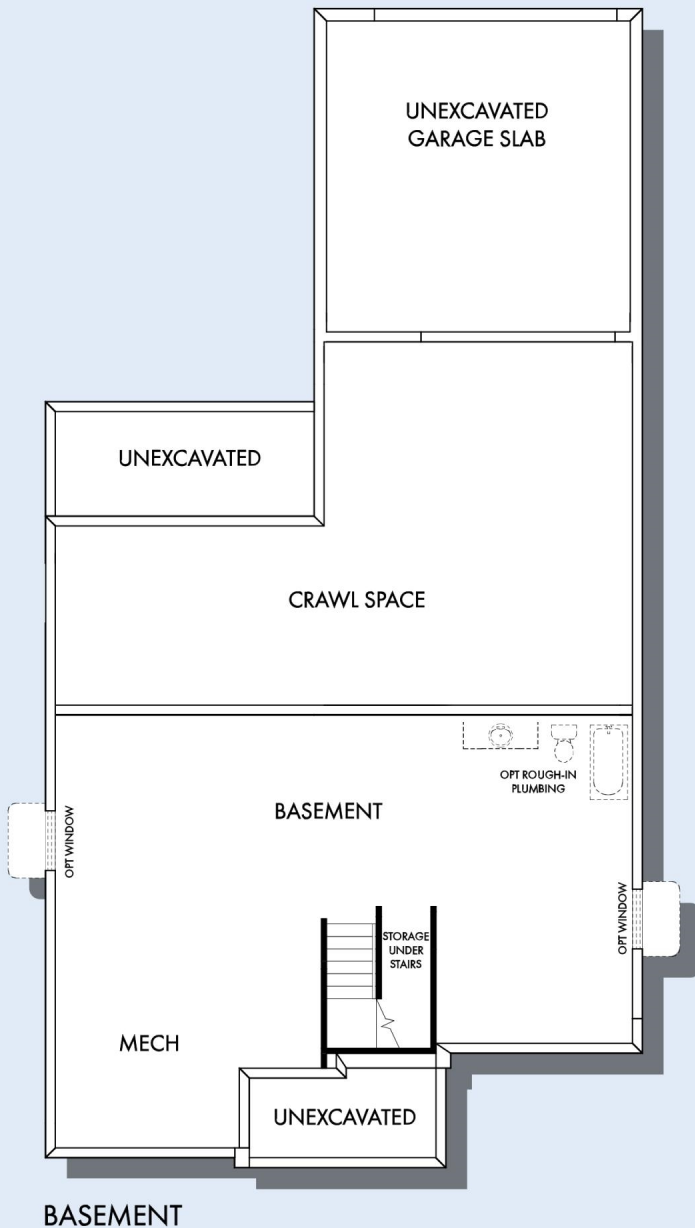
SECOND FLOOR

For additional options, please visit DavidWeekleyHomes.com

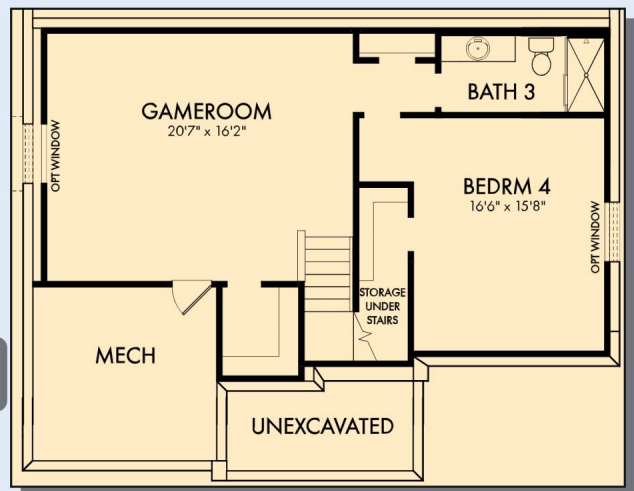
DavidWeekleyHomes.com



THE ANTHEM



OPTIONAL GAMEROOM WITH BATH 3 AT BASEMENT



OPTIONAL GAMEROOM WITH BEDROOM 4 AND BATH 3 AT BASEMENT

For additional options, please visit DavidWeekleyHomes.com

See a David Weekley Homes Sales Consultant for details. Prices, plans, dimensions, features, specifications, materials, and availability of homes or communities are subject to change without notice or obligation. Illustrations are artist's depictions only and may differ from completed improvements. Copyright © 2026 David Weekley Homes - All Rights Reserved. Indianapolis, IN

DavidWeekleyHomes.com

