

THE PUTMAN



Exterior A



Exterior B

3,096 - 4,556 sq. ft.

4 - 6 Bedrooms

2 - 4 Full Baths

1 Half Bath

3 - 4 Car Garage

Sandra A.



Best Builder Around

We have loved DW homes ever since our mother bought one. The quality of their work, attention to detail and willingness to respond to questions is top notch. The biggest thing we love about DW is their focus on customer service. They are not your typical builder who meets with you to get a check and forgets about you till walk thru. They are your partner through the entire process. Each step of the way they know they are building your dream house and really treat you like family. I would recommend them hands down. My husband sells real estate and has dealt with numerous builders around town. He always directs his clients to DW and signs their praises.

**David Weekley
Homes**

THE PUTMAN

3,096 - 4,556 sq. ft. • 4 - 6 Bedrooms • 2 - 4 Full Baths • 1 Half Bath • 3 - 4 Car Garage



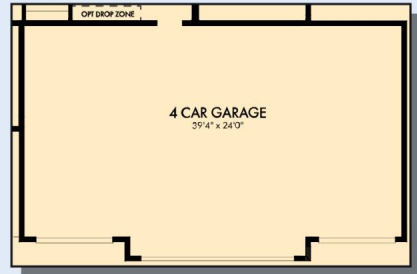
OPTIONAL WALL FIREPLACE AT FAMILY



OPTIONAL BEDROOM 5 WITH BATH 3 AT STUDY 2



FIRST FLOOR WITH OPTIONAL ATHLETIC COURT



OPTIONAL 4 CAR GARAGE



FIRST FLOOR

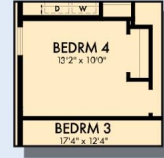
THE PUTMAN



OPTIONAL FREE STANDING TUB WITH SEPARATE SHOWER AT OWNER'S BATH



OPTIONAL SUPER SHOWER AT OWNER'S BATH



OPTIONAL BEDROOM 4 AT RETREAT

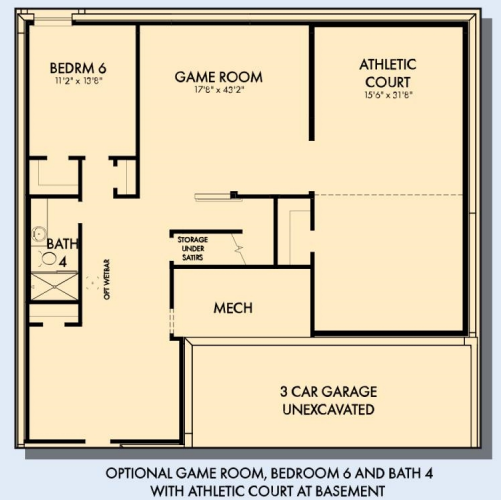
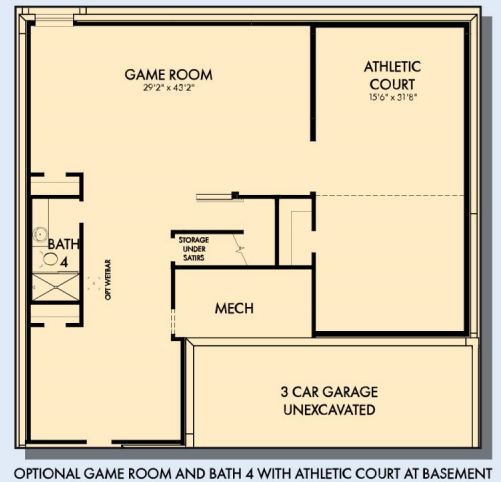
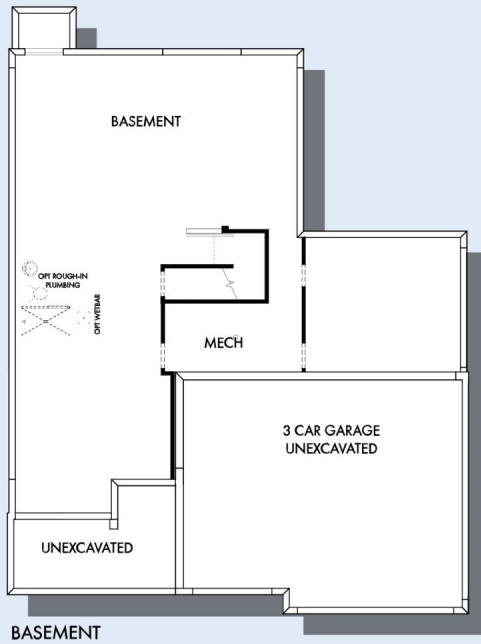


SECOND FLOOR

For additional options, please visit DavidWeekleyHomes.com

DavidWeekleyHomes.com

THE PUTMAN



For additional options, please visit DavidWeekleyHomes.com

See a David Weekley Homes Sales Consultant for details. Prices, plans, dimensions, features, specifications, materials, and availability of homes or communities are subject to change without notice or obligation. Illustrations are artist's depictions only and may differ from completed improvements. Copyright © 2026 David Weekley Homes - All Rights Reserved. Minneapolis/St. Paul, MN

DavidWeekleyHomes.com

