

# THE POMROY



Exterior A



Exterior B

1,890 - 3,117 sq. ft.

2 - 4 Bedrooms

2 - 3 Full Baths

3 Car Garage

**Sandra A.**



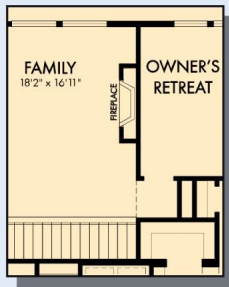
### **Best Builder Around**

We have loved DW homes ever since our mother bought one. The quality of their work, attention to detail and willingness to respond to questions is top notch. The biggest thing we love about DW is their focus on customer service. They are not your typical builder who meets with you to get a check and forgets about you till walk thru. They are your partner through the entire process. Each step of the way they know they are building your dream house and really treat you like family. I would recommend them hands down. My husband sells real estate and has dealt with numerous builders around town. He always directs his clients to DW and signs their praises.

**David Weekley  
Homes**

# THE POMROY

1,890 - 3,117 sq. ft. • 2 - 4 Bedrooms • 2 - 3 Full Baths • 3 Car Garage



OPTIONAL FIREPLACE  
AT FAMILY ROOM



OPTIONAL SLIDE IN TUB  
WITH SEPARATE SHOWER  
AT OWNER'S BATH



OPTIONAL BEDROOM 3

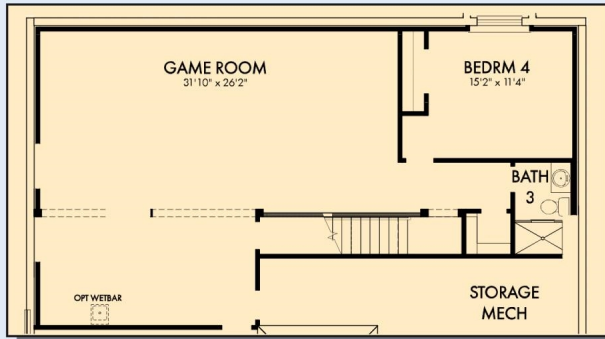


OPTIONAL SUPER SHOWER  
AT OWNER'S BATH

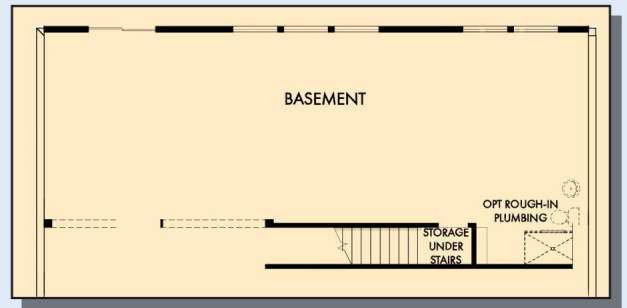


FIRST FLOOR

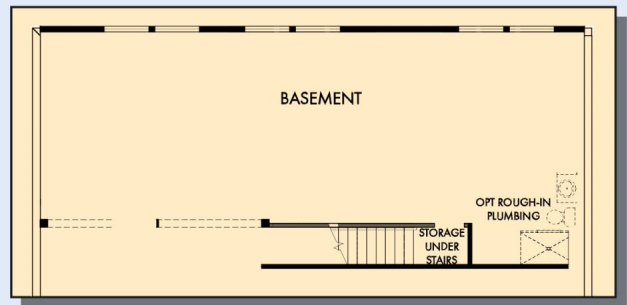
# THE POMROY



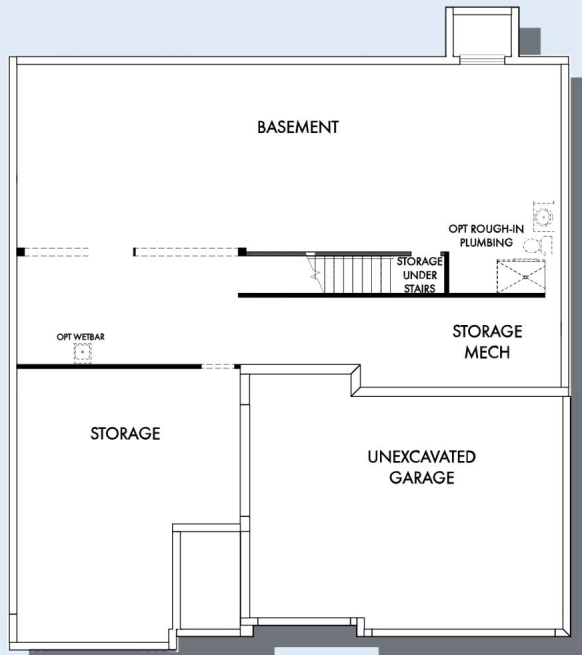
OPTIONAL FINISHED BASEMENT WITH GAME ROOM AND BEDROOM 4 AND BATH 3



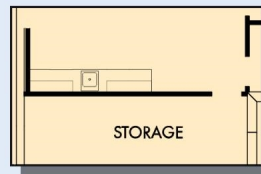
OPTIONAL WALKOUT BASEMENT



OPTIONAL DAYLIGHT BASEMENT



BASEMENT



OPTIONAL WETBAR

For additional options, please visit [DavidWeekleyHomes.com](http://DavidWeekleyHomes.com)

See a David Weekley Homes Sales Consultant for details. Prices, plans, dimensions, features, specifications, materials, and availability of homes or communities are subject to change without notice or obligation. Illustrations are artist's depictions only and may differ from completed improvements. Copyright © 2026 David Weekley Homes - All Rights Reserved. Minneapolis/St. Paul, MN

**DavidWeekleyHomes.com**

