

THE COBBLEWOOD



Exterior A

2,616 - 2,617 sq. ft.

3 - 5 Bedrooms

2 - 3 Full Baths

1 Half Bath

2 Car Garage



Exterior B

Crystal W.



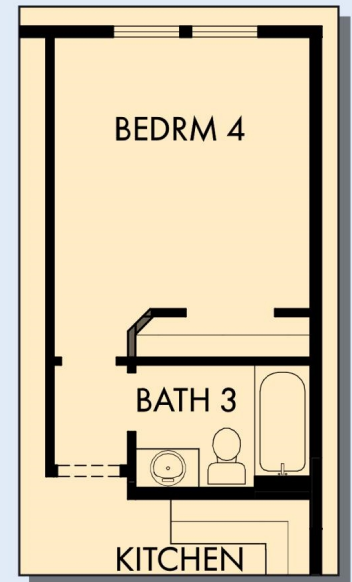
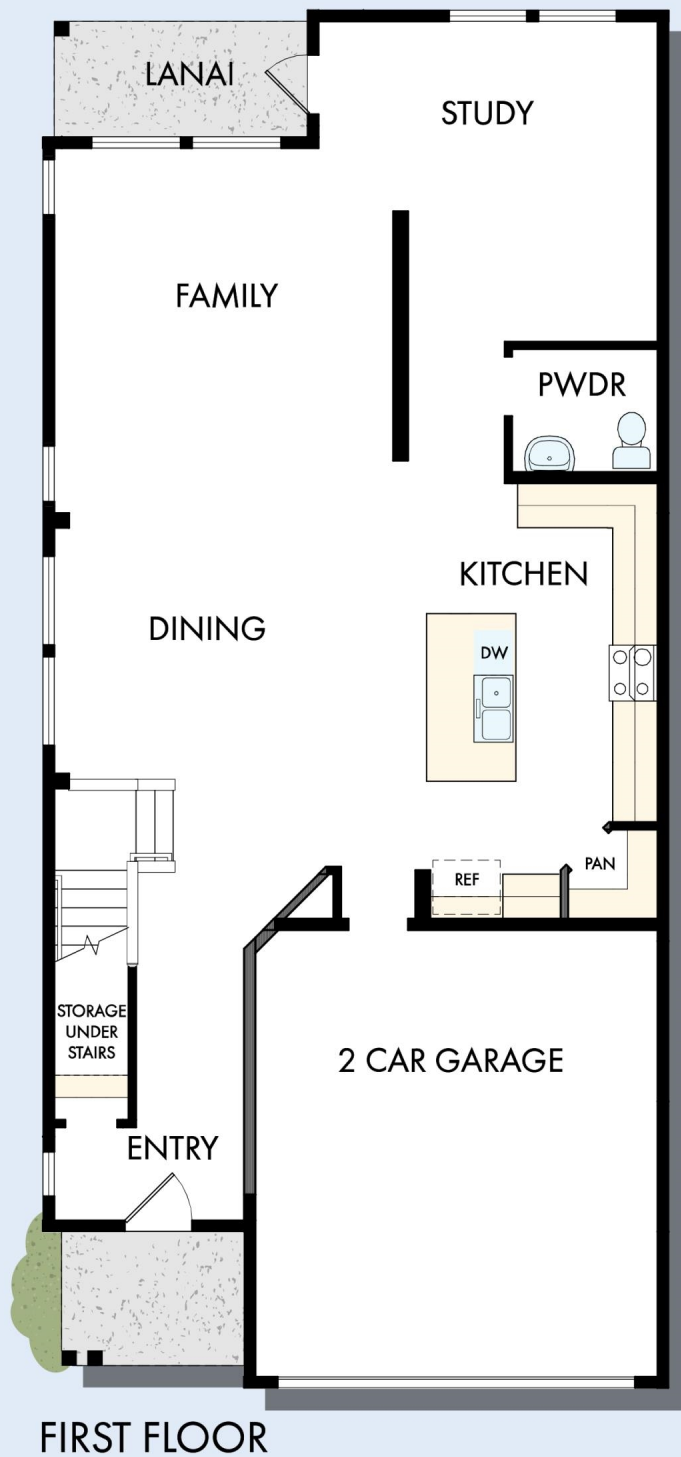
Welcome Home

My DWHomes experience has been truly 5-stars! From a floorplan concept, reserving a lot filled with dirt, the homebuilding project, to "Welcome Home", the entire process has been amazing. The team provided regular feedback and were always available to address questions and concerns. I was sold on the quality features. The entire team's availability and service has been exceptional before and after closing. Looking forward to enjoying our new home and neighbors for many years to come!

**David Weekley
Homes**

THE COBBLEWOOD

2,616 - 2,617 sq. ft. • 3 - 5 Bedrooms • 2 - 3 Full Baths • 1 Half Bath • 2 Car Garage



OPTIONAL BEDROOM 4
AT STUDY

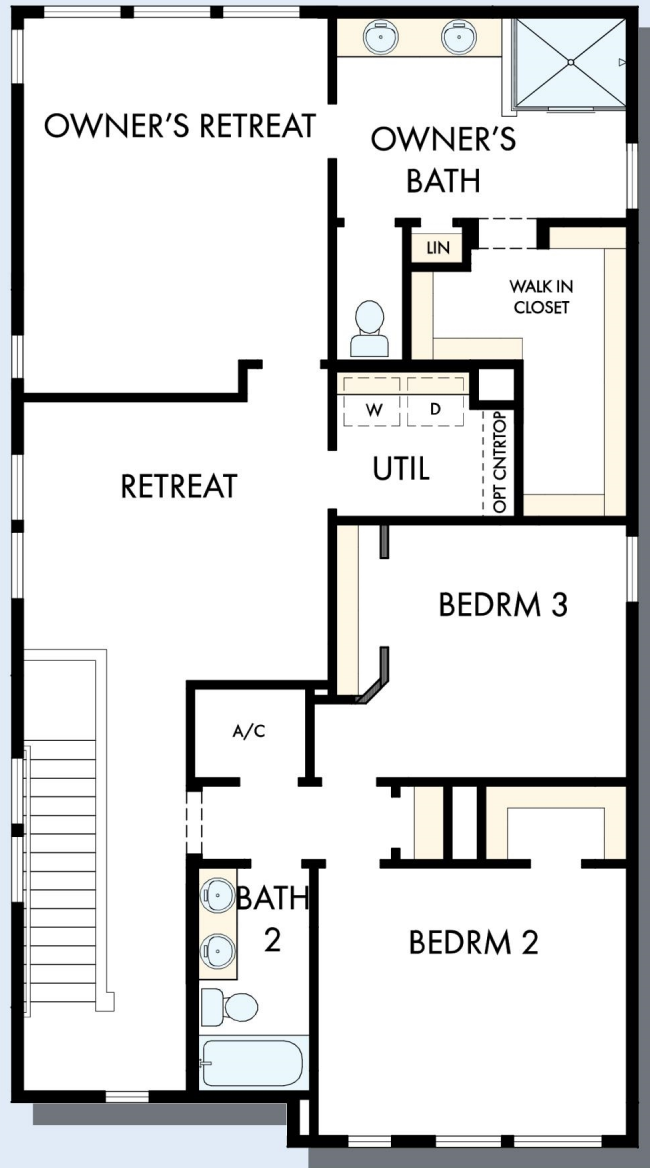
A096 in 4914 JAC

For additional options, please visit DavidWeekleyHomes.com

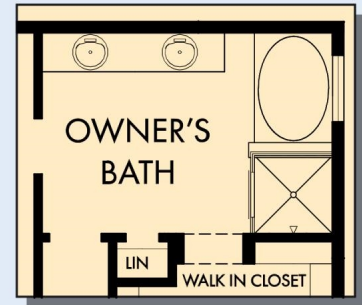
11/15/2024

DavidWeekleyHomes.com

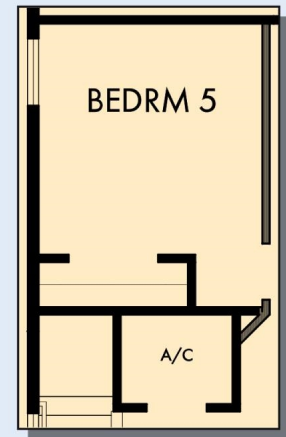
THE COBBLEWOOD



SECOND FLOOR



OPTIONAL SLIDE IN TUB
WITH SEPARATE SHOWER
AT OWNER'S BATH



OPTIONAL BEDROOM 5
AT RETREAT

For additional options, please visit DavidWeekleyHomes.com

DavidWeekleyHomes.com

See a David Weekley Homes Sales Consultant for details.
Prices, plans, dimensions, features, specifications, materials,
and availability of homes or communities are subject to
change without notice or obligation. Illustrations are artist's
depictions only and may differ from completed improvements.
Copyright © 2024 David Weekley Homes - All Rights Reserved.
Jacksonville, FL

