

THE AKERLY



Exterior A

2,155 - 3,706 sq. ft.

3 - 4 Bedrooms

2 - 3 Full Baths

0 - 1 Half Baths

3 - 4 Car Garage



Exterior B

Shane



We're living our fairytale thanks to David Weekley

We can't say enough about the level of quality and care we received while building our home. Our builder was with us every step of the way to make sure our every need and desire was being met! The team truly went above and beyond at every turn to give us the home of our dreams! We will definitely recommend David Weekley to anyone looking to build a new home!

**David Weekley
Homes**

THE AKERLY

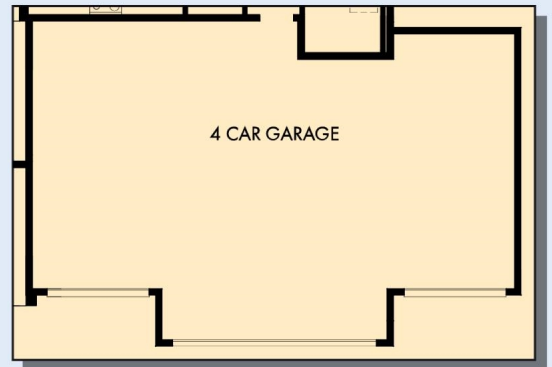
2,155 - 3,706 sq. ft. • 3 - 4 Bedrooms • 2 - 3 Full Baths • 0 - 1 Half Baths • 3 - 4 Car Garage



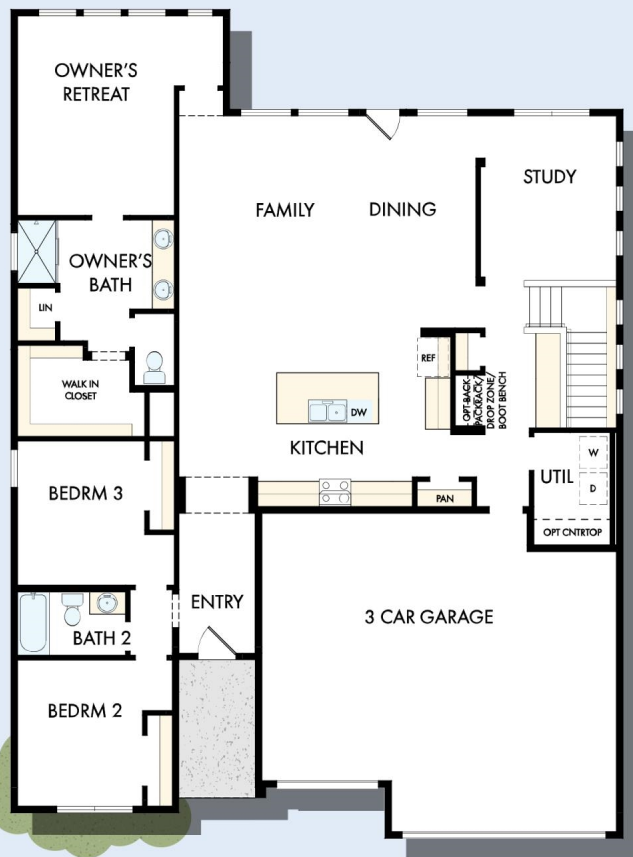
OPTIONAL SUPER
SHOWER AT
OWNER'S BATH



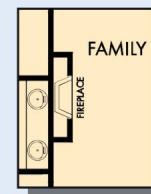
OPTIONAL
FREE STANDING
TUB AT
OWNER'S BATH



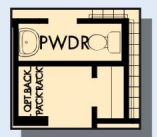
OPTIONAL ATTACHED 4 CAR GARAGE



FIRST FLOOR

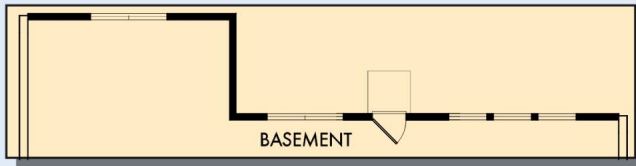


OPTIONAL WALL
FIREPLACE AT FAMILY

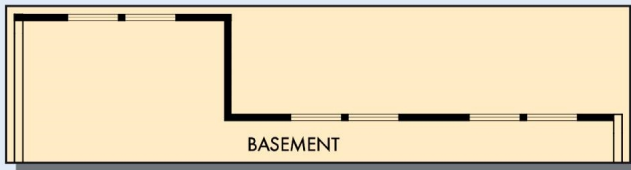


OPTIONAL POWDER
BATH AT HALL WAY

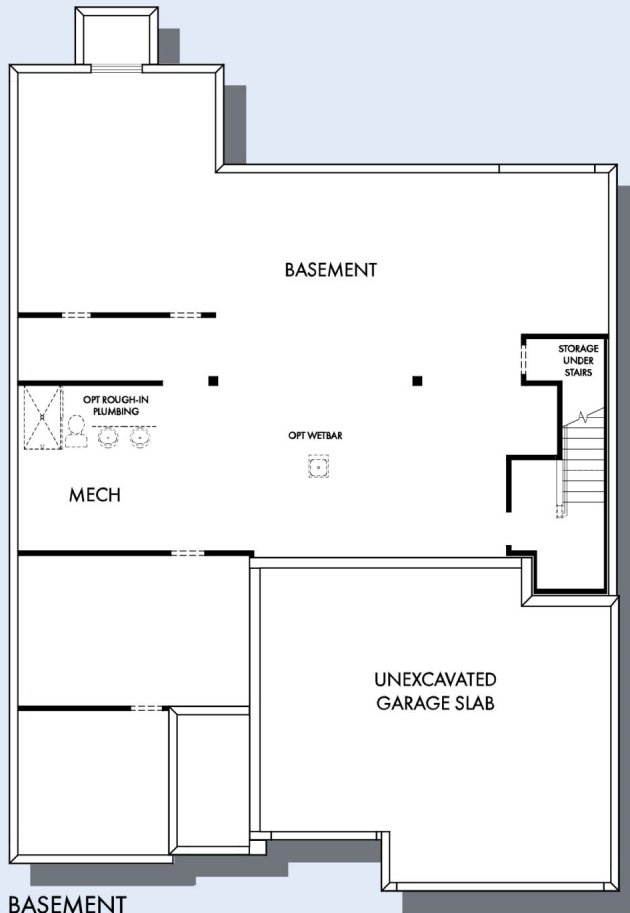
THE AKERLY



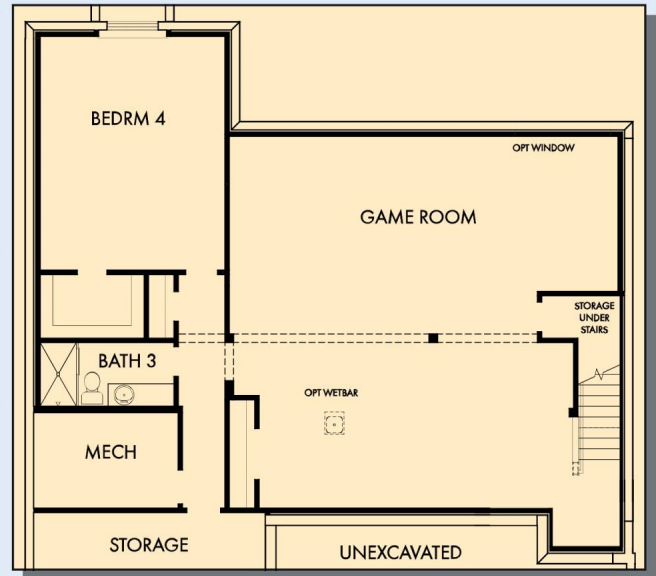
OPTIONAL WALKOUT AT BASEMENT



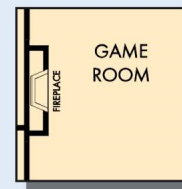
OPTIONAL DAYLIGHT AT BASEMENT



BASEMENT



OPTIONAL GAME ROOM WITH BEDROOM 4 AND BATH 3 AT BASEMENT



OPTIONAL WALL
FIREPLACE
AT GAME ROOM



OPTIONAL WET BAR
AT GAME ROOM

For additional options, please visit DavidWeekleyHomes.com

DavidWeekleyHomes.com



See a David Weekley Homes Sales Consultant for details. Prices, plans, dimensions, features, specifications, materials, and availability of homes or communities are subject to change without notice or obligation. Illustrations are artist's depictions only and may differ from completed improvements. Copyright © 2025 David Weekley Homes - All Rights Reserved. Minneapolis/St. Paul, MN