

THE ERINDALE

sq. ft.

Bedrooms

Full Baths

Half Baths

Car Garage

**David Weekley
Homes**

Meg S.



Truly treated us like family!!!

We enjoyed every part of the home building process. It was amazing! Our builder was always keeping us informed and really went above and beyond to ensure that we love our home. Our warranty rep is outstanding and continues to take care of our every need. I couldn't have asked for a better experience. Our builder and warranty rep continue to be there for us as a family. While our interactions with the DW Family have been highly professional, we are also lucky enough to be able to call them some of our greatest friends! Wouldn't change a thing!

Jordan

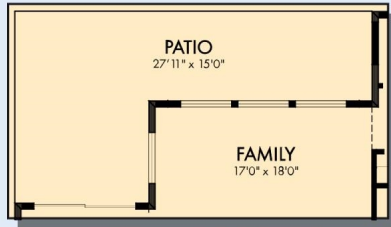


Greatly exceeded every expectation! A+++!

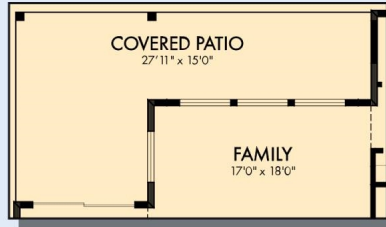
The entire experience was excellent from the first day I showed up to look at houses. The whole team came together to provide a truly quality house that I will be living in for years to come. Kajal helped me purchase the house and coordinated all meetings. She was very cheerful and professional at all times and I could tell that she cared about her clients and my family. Jeff and Robbie were builders that always went the extra mile to ensure total customer satisfaction. Jeff was very helpful and I am grateful to his management and know that I will be moving in to a house that is built right with a great attention to detail... Ashley also provided Kajal with assistance whenever Kajal was not available. I could not be happier with everyone involved in building this house. David Weekley is a great company and I would enthusiastically recommend them to others needing a quality house built in the future. Thank you for such a great experience and I hope that this company continues to grow.

THE ERINDALE

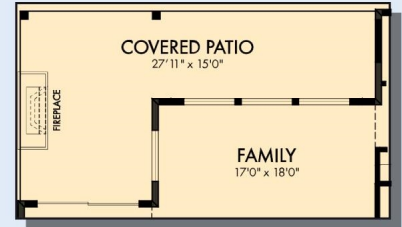
sq. ft. • Bedrooms • Full Baths • Half Baths • Car Garage



OPTIONAL EXTENDED PATIO



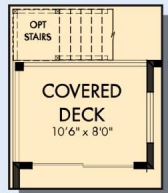
OPTIONAL EXTENDED COVERED PATIO



OPTIONAL OUTDOOR TRADITIONAL FIREPLACE AT EXTENDED COVERED PATIO



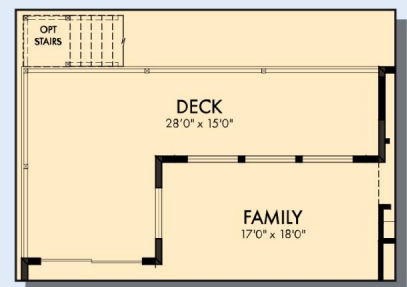
OPTIONAL COVERED PATIO



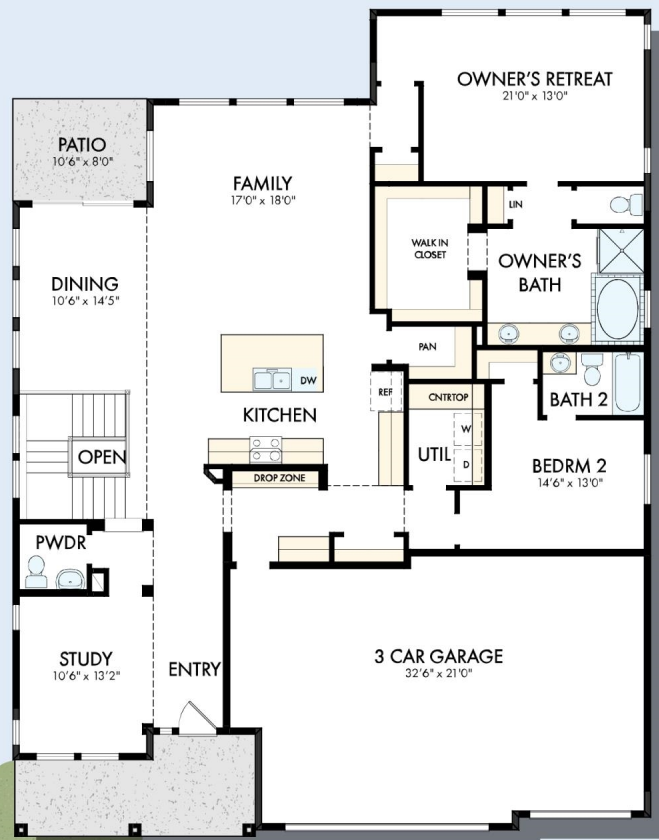
OPTIONAL COVERED DECK WITH DAYLIGHT/WALKOUT BASEMENT



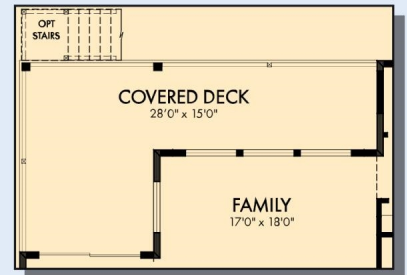
OPTIONAL DECK WITH DAYLIGHT/WALKOUT BASEMENT



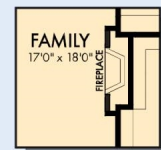
OPTIONAL EXTENDED DECK WITH DAYLIGHT/WALKOUT BASEMENT



FIRST FLOOR



OPTIONAL EXTENDED COVERED DECK WITH DAYLIGHT/WALKOUT BASEMENT



OPTIONAL WALL FIREPLACE AT FAMILY



OPTIONAL FREE STANDING TUB WITH SEPARATE SHOWER AT OWNER'S BATH

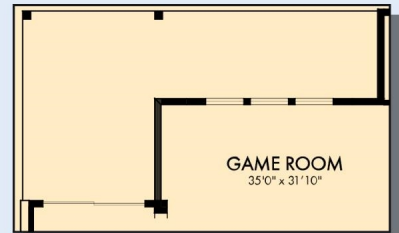


OPTIONAL SUPER SHOWER AT OWNER'S BATH

THE ERINDALE



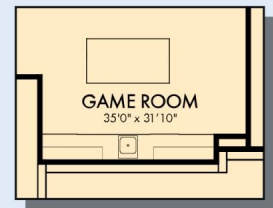
OPTIONAL WALKOUT AT BASEMENT



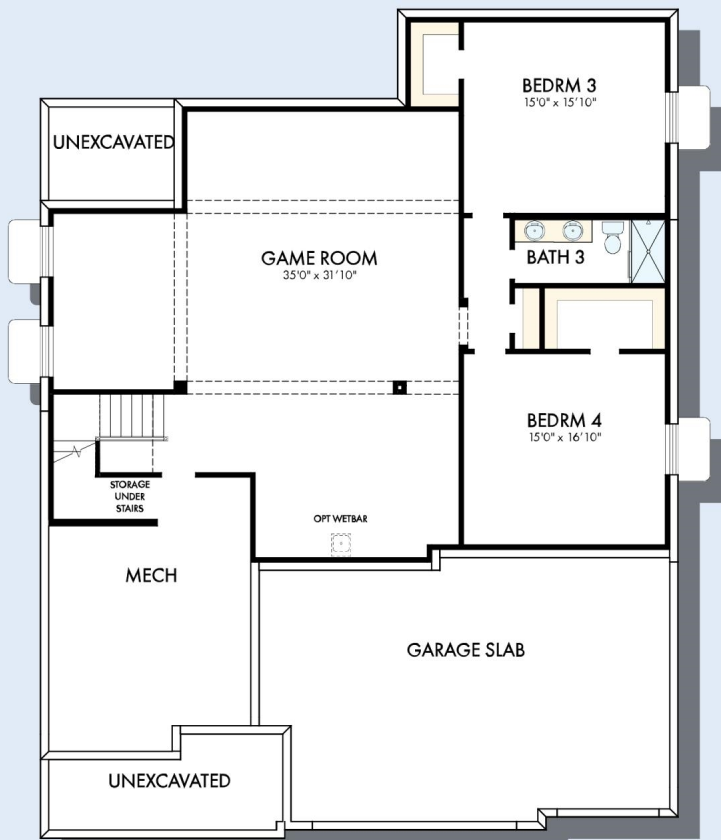
OPTIONAL EXTENDED DECK WITH DAYLIGHT/WALKOUT BASEMENT



OPTIONAL DAYLIGHT AT BASEMENT



OPTIONAL WETBAR AT GAME ROOM



BASEMENT

For additional options, please visit DavidWeekleyHomes.com

See a David Weekley Homes Sales Consultant for details. Prices, plans, dimensions, features, specifications, materials, and availability of homes or communities are subject to change without notice or obligation. Illustrations are artist's depictions only and may differ from completed improvements. Copyright © 2026 David Weekley Homes - All Rights Reserved. CSP, CO

DavidWeekleyHomes.com

