

THE SHIPMAN



Exterior A

2,208 - 3,942 sq. ft.

3 - 4 Bedrooms

2 - 3 Full Baths

0 - 1 Half Baths

3 Car Garage



Exterior B

Shane



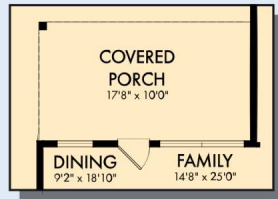
We're living our fairytale thanks to David Weekley

We can't say enough about the level of quality and care we received while building our home. Our builder was with us every step of the way to make sure our every need and desire was being met! The team truly went above and beyond at every turn to give us the home of our dreams! We will definitely recommend David Weekley to anyone looking to build a new home!

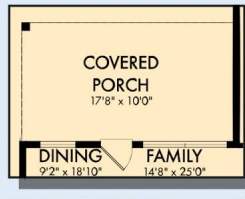
**David Weekley
Homes**

THE SHIPMAN

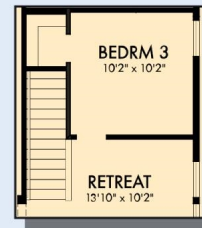
2,208 - 3,942 sq. ft. • 3 - 4 Bedrooms • 2 - 3 Full Baths • 0 - 1 Half Baths • 3 Car Garage



OPTIONAL COVERED PORCH WITH UNFINISHED BASEMENT



OPTIONAL EXTENDED COVERED PORCH AT DINING



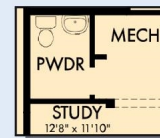
FIRST FLOOR WITH OPTIONAL BASEMENT



OPTIONAL SUPER SHOWER AT OWNER'S BATH



FIRST FLOOR

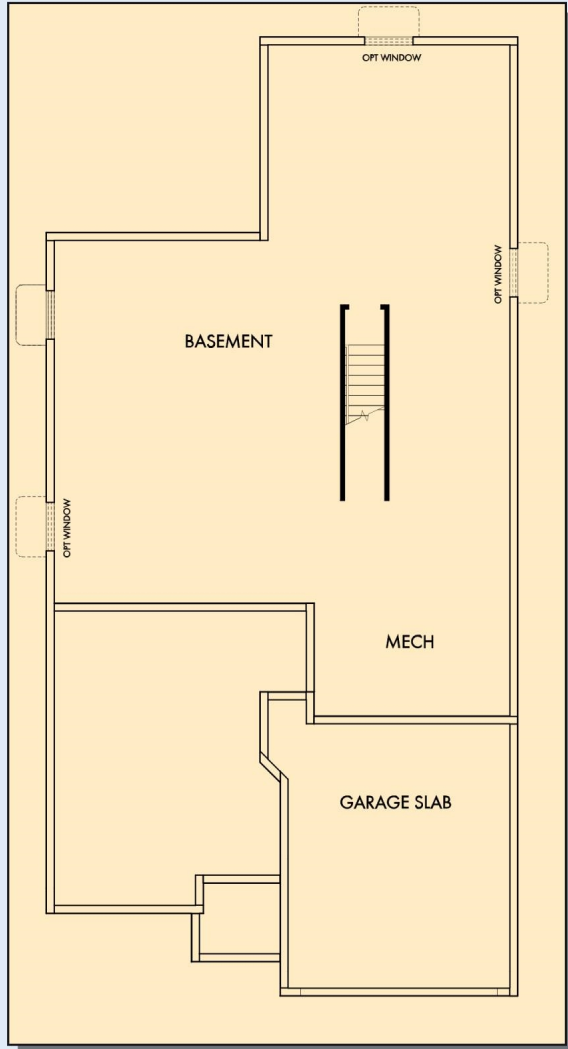


OPTIONAL POWDER BATH AT HALLWAY

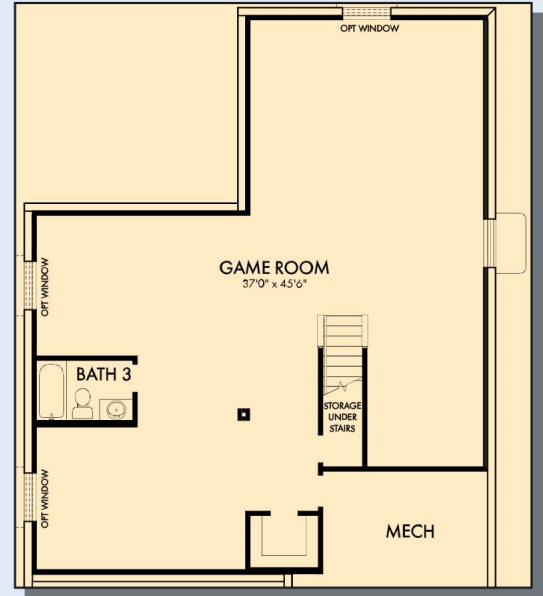


OPTIONAL EXTENDED BEDROOM 2 AND 3 AT RETREAT

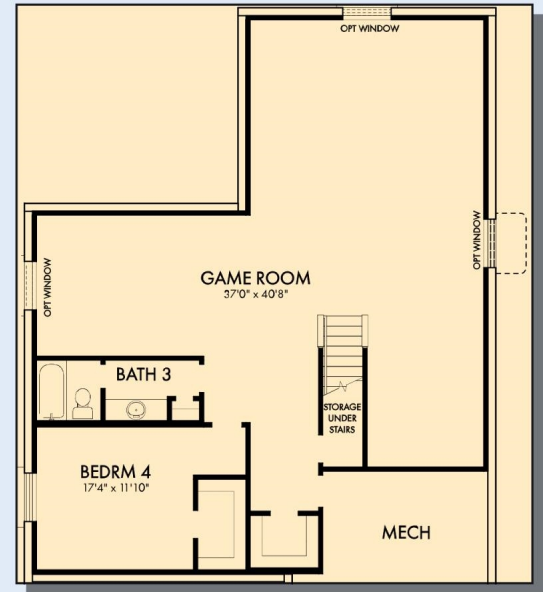
THE SHIPMAN



OPTIONAL BASEMENT



OPTIONAL GAME ROOM WITH BATH 3 AT BASEMENT



OPTIONAL GAME ROOM WITH BEDROOM 4 AND BATH 3 AT BASEMENT

For additional options, please visit DavidWeekleyHomes.com

See a David Weekley Homes Sales Consultant for details. Prices, plans, dimensions, features, specifications, materials, and availability of homes or communities are subject to change without notice or obligation. Illustrations are artist's depictions only and may differ from completed improvements. Copyright © 2026 David Weekley Homes - All Rights Reserved. Indianapolis, IN

DavidWeekleyHomes.com

