

# THE SWEETWOOD



Exterior A

2,077 - 2,078 sq. ft.

3 Bedrooms

3 Full Baths

1 Car Garage



Exterior B

**Shane**



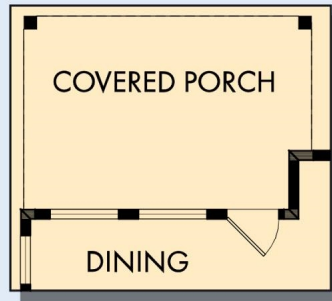
**We're living our fairytale thanks to David Weekley**

We can't say enough about the level of quality and care we received while building our home. Our builder was with us every step of the way to make sure our every need and desire was being met! The team truly went above and beyond at every turn to give us the home of our dreams! We will definitely recommend David Weekley to anyone looking to build a new home!

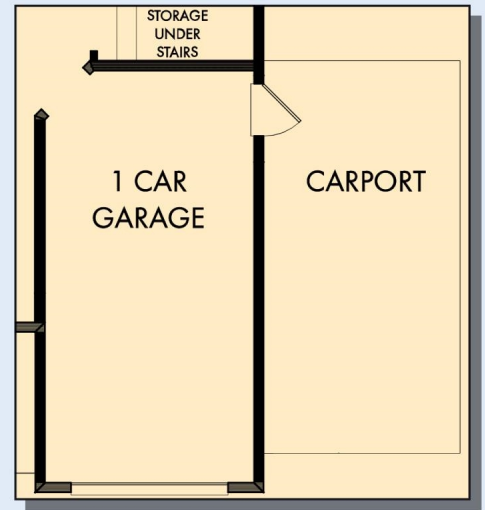
**David Weekley  
Homes**

# THE SWEETWOOD

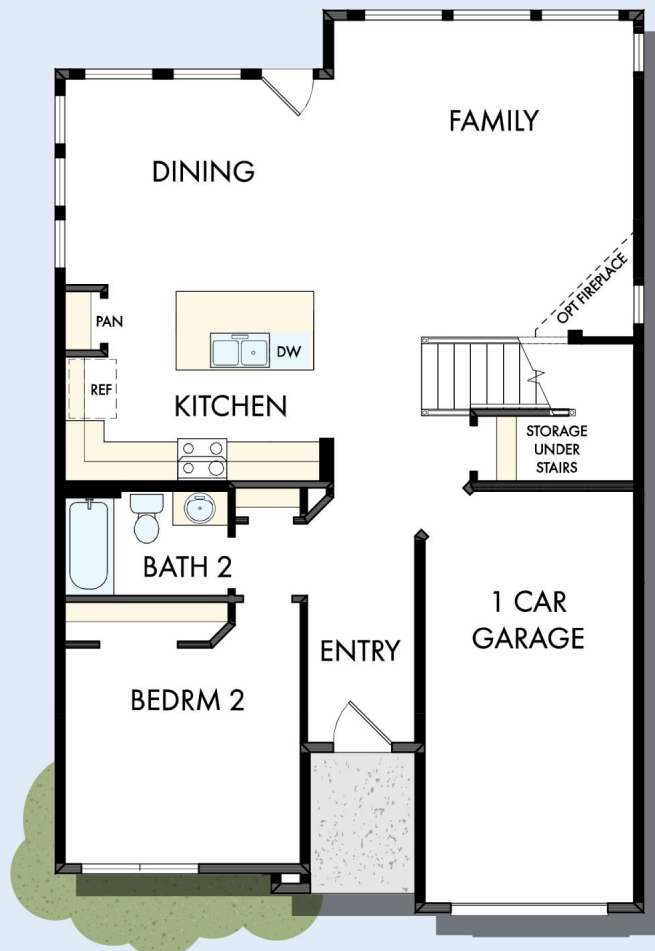
2,077 - 2,078 sq. ft. • 3 Bedrooms • 3 Full Baths • 1 Car Garage



OPTIONAL COVERED PORCH AT DINING



OPTIONAL CARPORT PAD



FIRST FLOOR



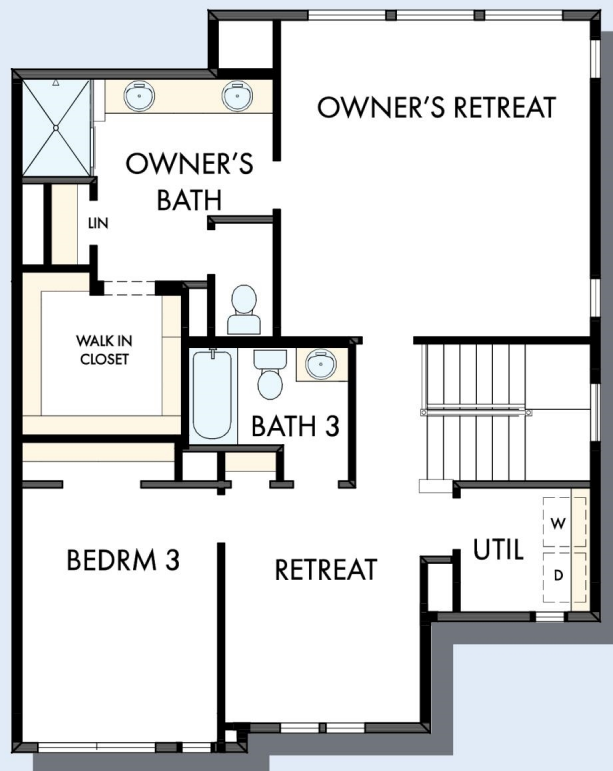
# THE SWEETWOOD



OPTIONAL SUPER  
SHOWER  
AT OWNER'S BATH



OPTIONAL EXTENDED BEDROOM 3



SECOND FLOOR

For additional options, please visit [DavidWeekleyHomes.com](http://DavidWeekleyHomes.com)



See a David Weekley Homes Sales Consultant for details.  
Prices, plans, dimensions, features, specifications, materials,  
and availability of homes or communities are subject to  
change without notice or obligation. Illustrations are artist's  
depictions only and may differ from completed improvements.  
Copyright © 2023 David Weekley Homes - All Rights Reserved.  
Austin, TX

## DavidWeekleyHomes.com