

# THE JENKINS



Exterior D

2,593 - 2,620 sq. ft.

4 Bedrooms

2 - 3 Full Baths

1 Half Bath

2 Car Garage



Exterior E

**Crystal W.**



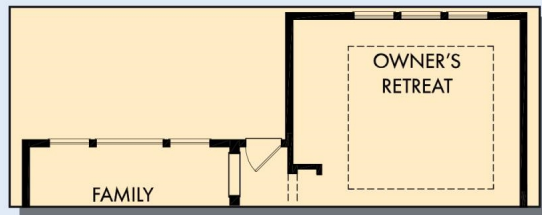
## Welcome Home

My DWHomes experience has been truly 5-stars! From a floorplan concept, reserving a lot filled with dirt, the homebuilding project, to "Welcome Home", the entire process has been amazing. The team provided regular feedback and were always available to address questions and concerns. I was sold on the quality features. The entire team's availability and service has been exceptional before and after closing. Looking forward to enjoying our new home and neighbors for many years to come!

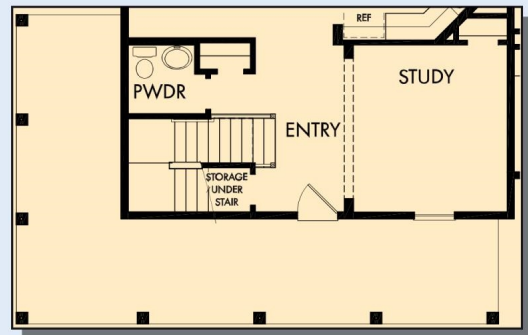
**David Weekley  
Homes**

# THE JENKINS

2,593 - 2,620 sq. ft. • 4 Bedrooms • 2 - 3 Full Baths • 1 Half Bath • 2 Car Garage



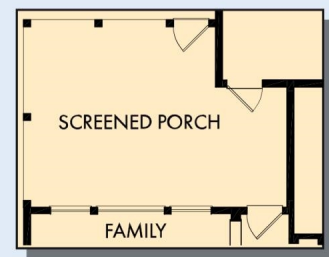
FIRST FLOOR WITH OPTIONAL DETACHED GARAGE



FIRST FLOOR WITH OPTIONAL WRAP AROUND PORCH



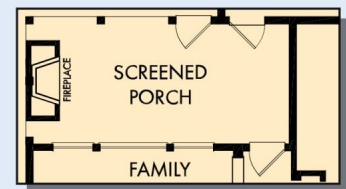
FIRST FLOOR



OPTIONAL EXTENDED SCREENED PORCH AT FAMILY



OPTIONAL FREE  
STANDING TUB WITH  
SEPARATE SHOWER  
AT OWNER'S BATH



OPTIONAL OUTDOOR FIREPLACE  
AT SCREENED PORCH



OPTIONAL SUPER  
SHOWER AT  
OWNER'S BATH



# THE JENKINS



For additional options, please visit [DavidWeekleyHomes.com](http://DavidWeekleyHomes.com)



See a David Weekley Homes Sales Consultant for details. Prices, plans, dimensions, features, specifications, materials, and availability of homes or communities are subject to change without notice or obligation. Illustrations are artist's depictions only and may differ from completed improvements. Copyright © 2025 David Weekley Homes - All Rights Reserved. Charleston, SC

## DavidWeekleyHomes.com