

THE NORTHPORT II



Exterior A

1,719 - 2,055 sq. ft.

3 - 4 Bedrooms

2 - 3 Full Baths

1 - 2 Half Baths

2 Car Garage



Exterior B

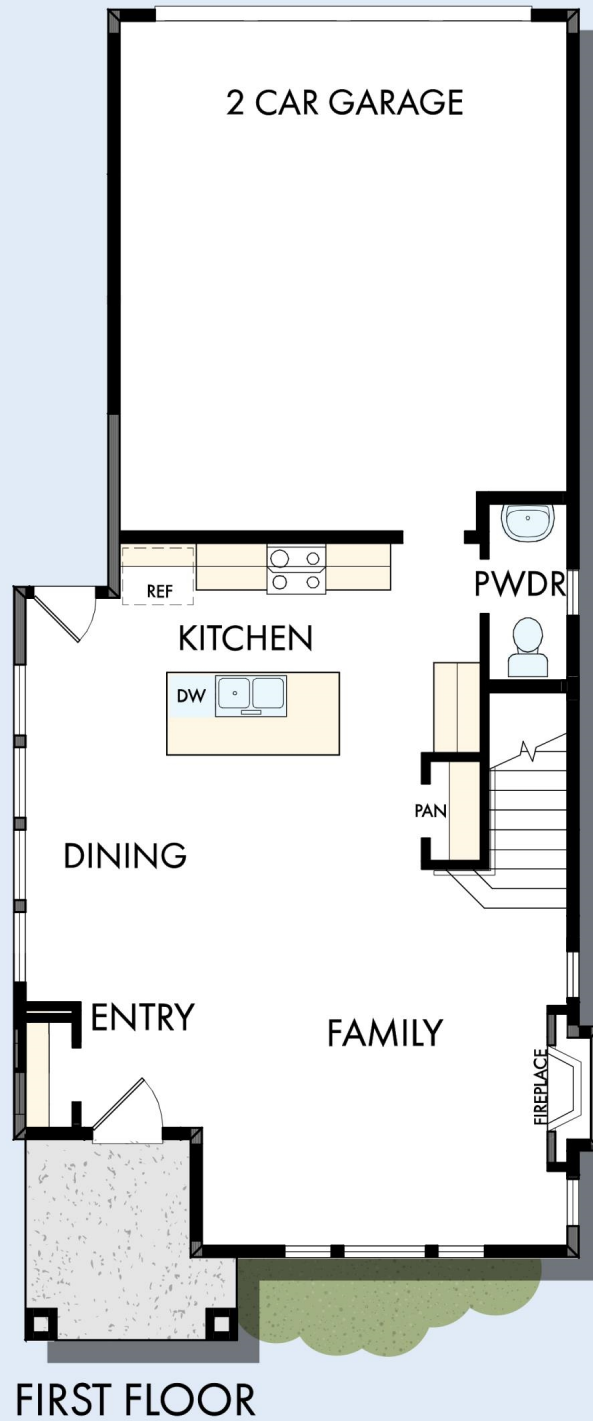


Exterior C

David Weekley
Homes

THE NORTHPORT II

1,719 - 2,055 sq. ft. • 3 - 4 Bedrooms • 2 - 3 Full Baths • 1 - 2 Half Baths • 2 Car Garage



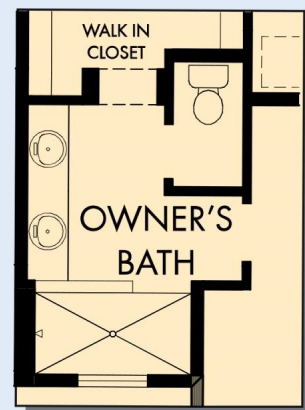
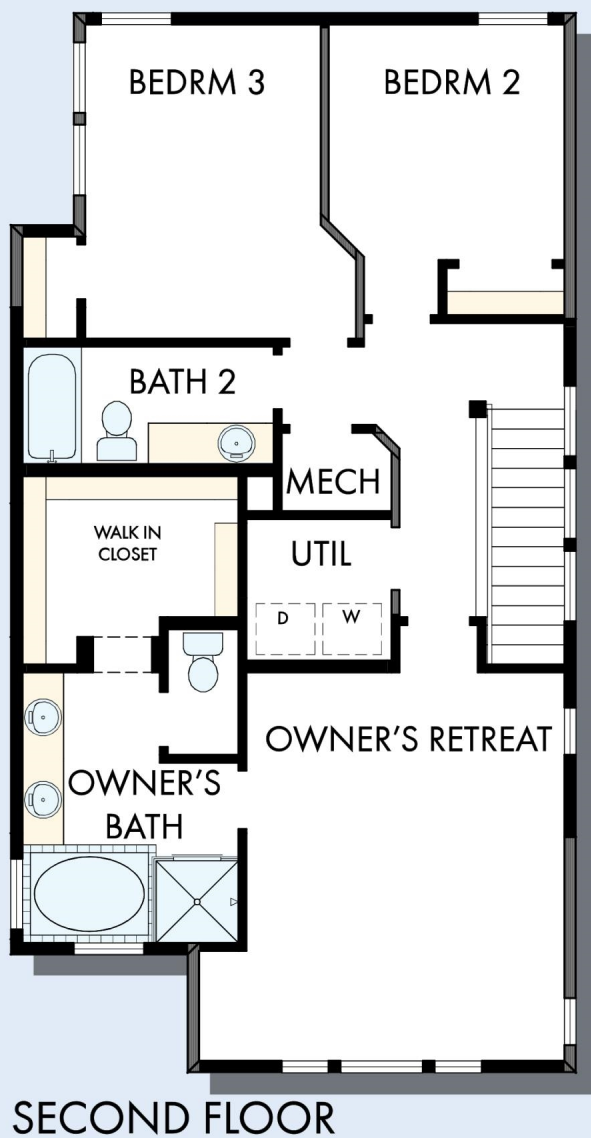
A367 in 6804 POR

For additional options, please visit DavidWeekleyHomes.com

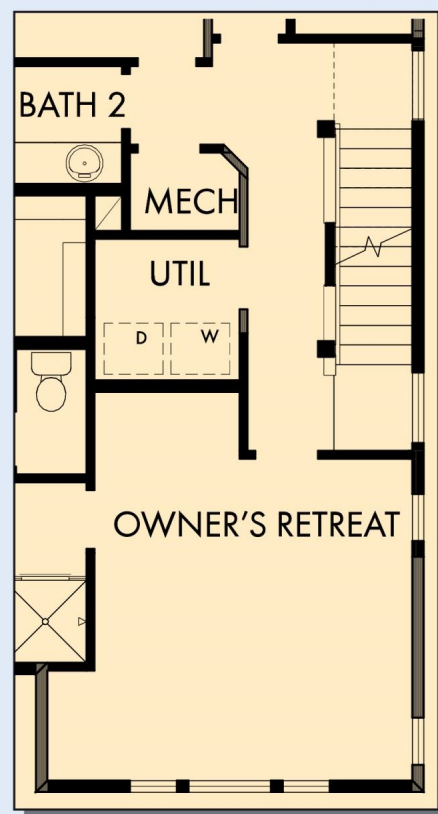
6/2/2025

DavidWeekleyHomes.com

THE NORTHPORT II



OPTIONAL SUPER
SHOWER AT
OWNER'S RETREAT

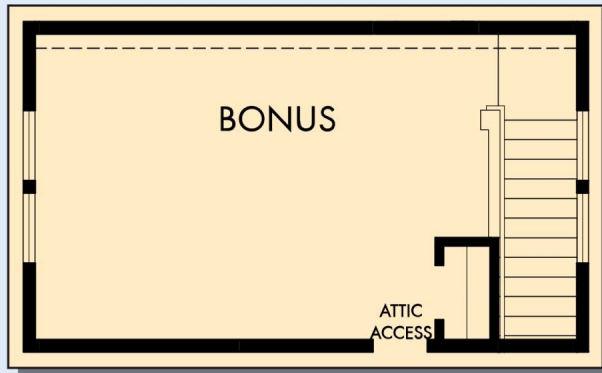


SECOND FLOOR WITH
OPTIONAL THIRD FLOOR

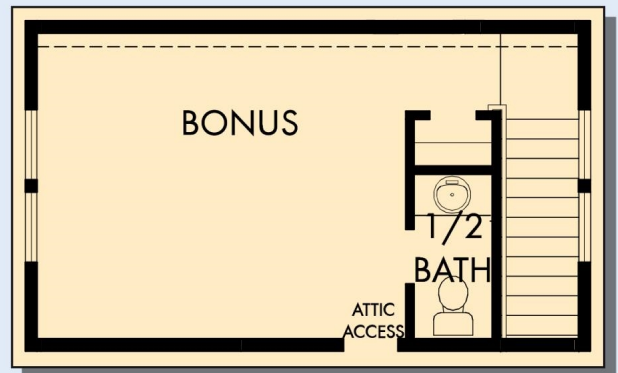
For additional options, please visit DavidWeekleyHomes.com

DavidWeekleyHomes.com

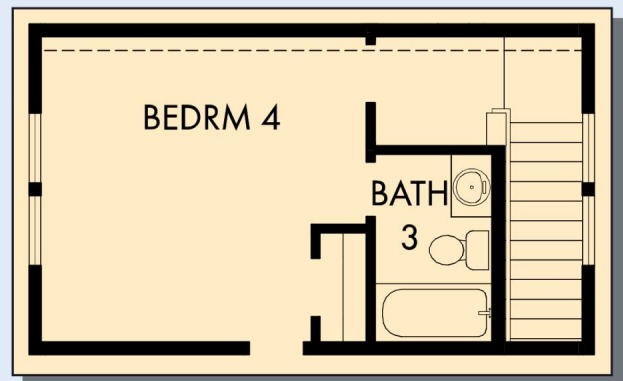
THE NORTHPORT II



OPTIONAL THIRD FLOOR BONUS



OPTIONAL THIRD FLOOR BONUS WITH
1/2 BATH



OPTIONAL THIRD FLOOR WITH
BEDROOM 4 AND BATH 3

For additional options, please visit DavidWeekleyHomes.com



See a David Weekley Homes Sales Consultant for details.
Prices, plans, dimensions, features, specifications, materials,
and availability of homes or communities are subject to
change without notice or obligation. Illustrations are artist's
depictions only and may differ from completed improvements.
Copyright © 2025 David Weekley Homes - All Rights Reserved.
POR, OR

DavidWeekleyHomes.com