

THE TULIP



Exterior F

1,989 - 2,000 sq. ft.

3 Bedrooms

2 Full Baths

2 Car Garage



Exterior H

Meg S.



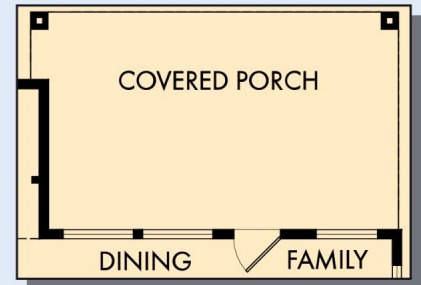
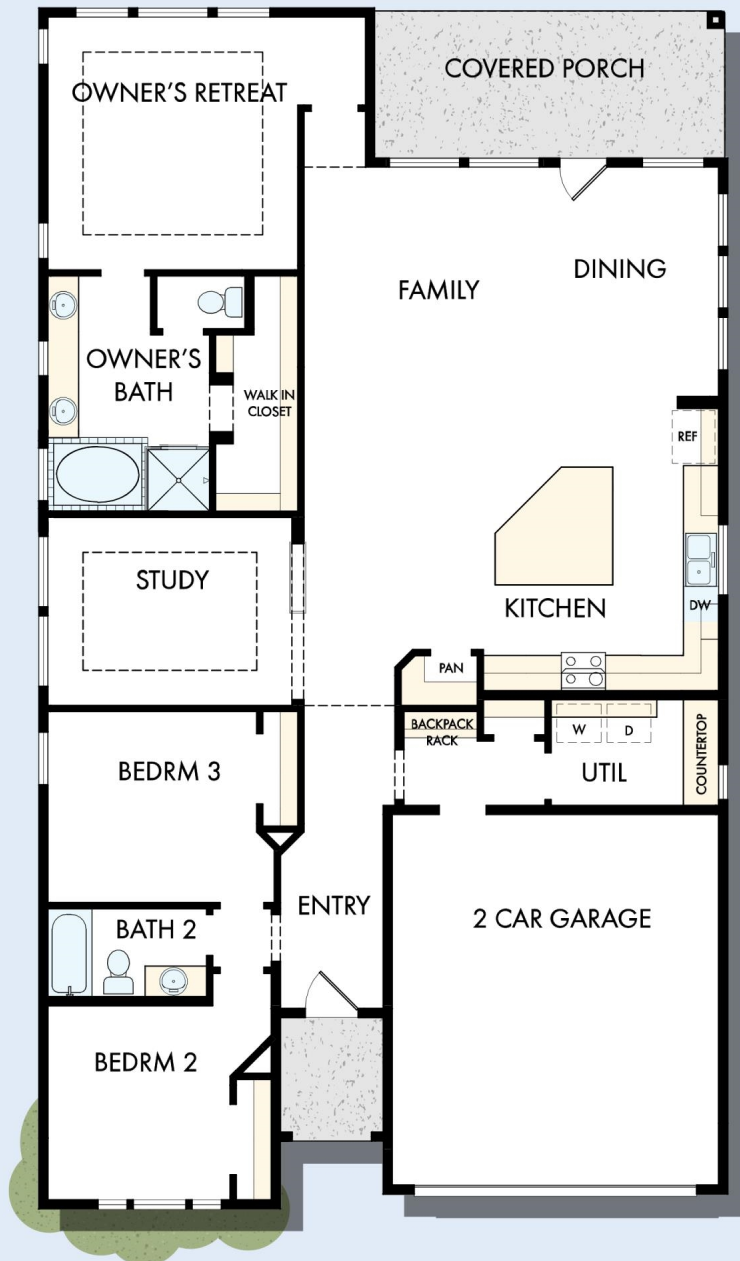
Truly treated us like family!!!

We enjoyed every part of the home building process. It was amazing! Our builder was always keeping us informed and really went above and beyond to ensure that we love our home. Our warranty rep is outstanding and continues to take care of our every need. I couldn't have asked for a better experience. Our builder and warranty rep continue to be there for us as a family. While our interactions with the DW Family have been highly professional, we are also lucky enough to be able to call them some of our greatest friends! Wouldn't change a thing!

David Weekley
Homes

THE TULIP

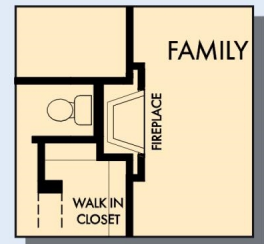
1,989 - 2,000 sq. ft. • 3 Bedrooms • 2 Full Baths • 2 Car Garage



OPTIONAL EXTENDED COVERED PORCH



OPTIONAL SUPER SHOWER AT OWNER'S BATH



OPTIONAL WALL FIREPLACE AT FAMILY

T002 in 7022 HOU

For additional options, please visit DavidWeekleyHomes.com

12/31/2025



See a David Weekley Homes Sales Consultant for details. Prices, plans, dimensions, features, specifications, materials, and availability of homes or communities are subject to change without notice or obligation. Illustrations are artist's depictions only and may differ from completed improvements. Copyright © 2025 David Weekley Homes - All Rights Reserved. Houston, TX

DavidWeekleyHomes.com