

# THE MORTON



Exterior A



Exterior B

2,346 - 2,366 sq. ft.

3 - 4 Bedrooms

2 Full Baths

1 Half Bath

2 Car Garage

## Gigi and Papa



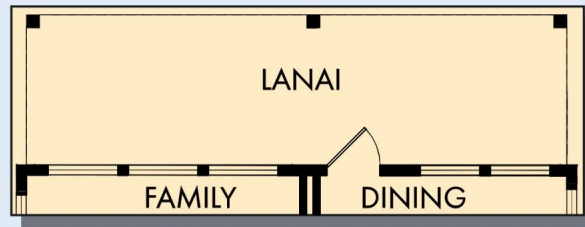
### THE BESTest - Better than all the rest!

What an awesome and personal family-oriented company! From touring model homes to selecting "THE ONE" just for us, the experience was delightful and amazing! The entire David Weekley team has been exceptionally wonderful and always available to address any issues we encountered. We have been amazed and impressed by the "Service after the Sale" approach by the David Weekley staff. We would recommend David Weekley homes to anyone. We feel like we are an important member of the Weekley family!

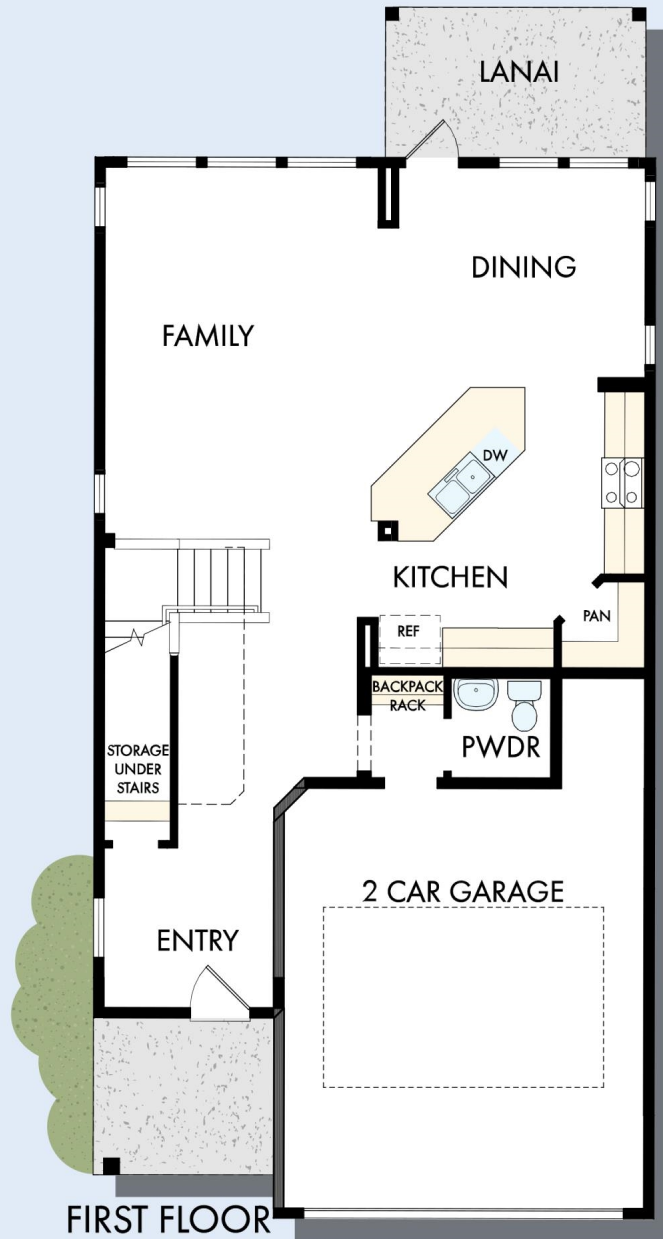
**David Weekley  
Homes**

# THE MORTON

2,346 - 2,366 sq. ft. • 3 - 4 Bedrooms • 2 Full Baths • 1 Half Bath • 2 Car Garage



OPTIONAL EXTENDED LANAI



A093 in 4914 JAC

For additional options, please visit [DavidWeekleyHomes.com](http://DavidWeekleyHomes.com)

11/18/2024

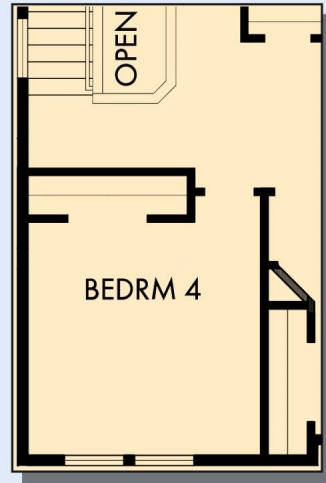
**DavidWeekleyHomes.com**



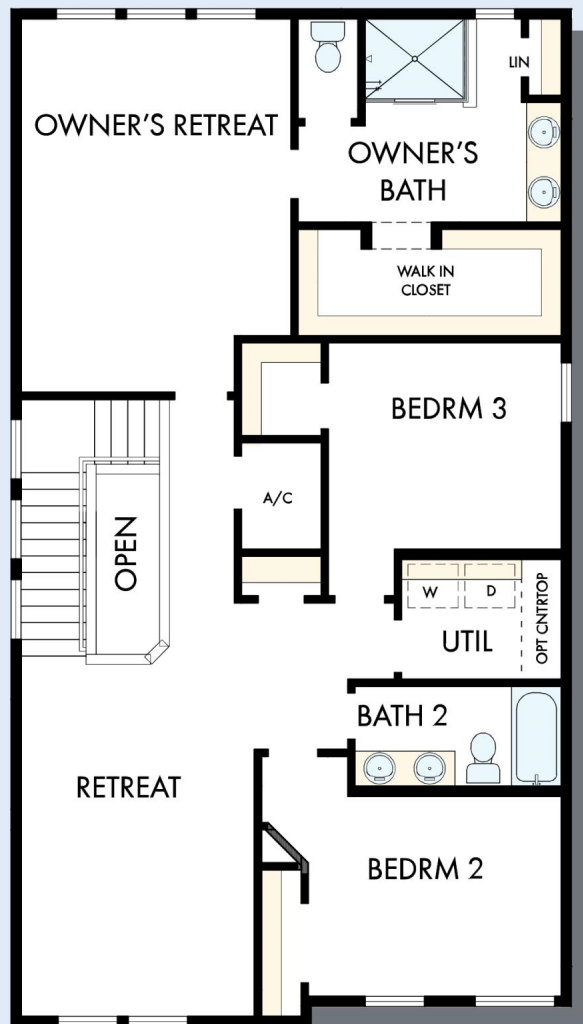
# THE MORTON



OPTIONAL SLIDE-IN TUB  
WITH SEPARATE SHOWER  
AT OWNER'S BATH



OPTIONAL BEDROOM 4  
AT RETREAT



SECOND FLOOR

For additional options, please visit [DavidWeekleyHomes.com](http://DavidWeekleyHomes.com)

**DavidWeekleyHomes.com**

See a David Weekley Homes Sales Consultant for details.  
Prices, plans, dimensions, features, specifications, materials,  
and availability of homes or communities are subject to  
change without notice or obligation. Illustrations are artist's  
depictions only and may differ from completed improvements.  
Copyright © 2024 David Weekley Homes - All Rights Reserved.  
Jacksonville, FL

